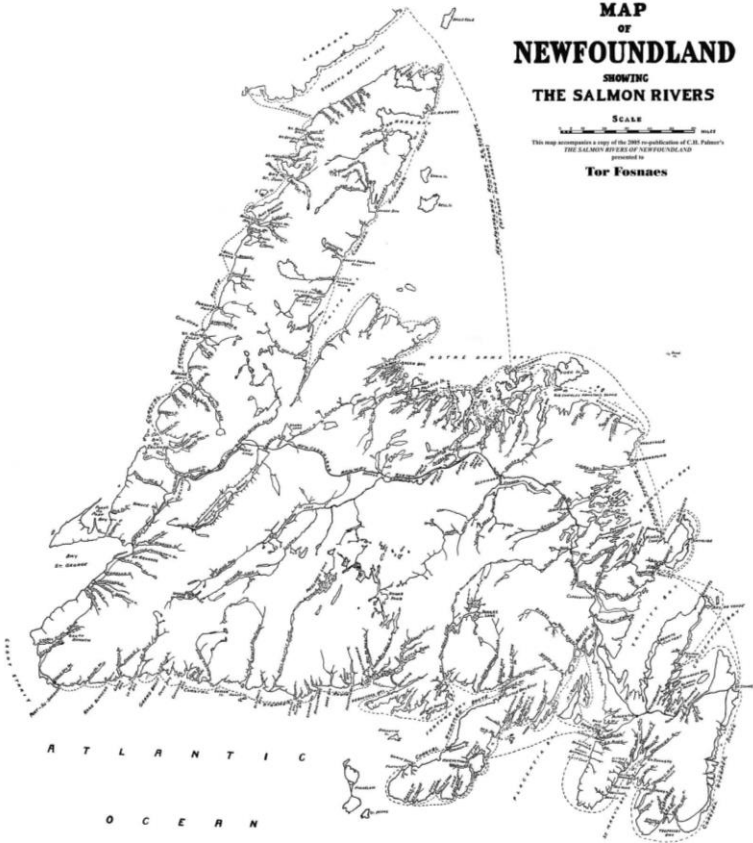


SALMON RIVERS OF NEWFOUNDLAND

South Coast – Burin to Garia Bay

from C.H. Palmer's 1928 book of the same name



Mobilewords Limited

© 2016

Publishing information

Library and Archives Canada Cataloguing in Publication

Palmer, C. H., author

Salmon rivers of Newfoundland.

Originally published in 1928 in 1 volume and re-published by Mobilewords Limited in 2005.

Contents: Volume 6. South coast--Burin to Garia Bay

ISBN 978-0-9958183-3-0 (v. 6 : PDF).

1. Atlantic salmon fishing--Newfoundland and Labrador. 2. Rivers--Newfoundland and Labrador. I. Title.

SH685.P35 2016

799.17'5609718

C2016-907316-5

ISBN: 978-0-9958183-3-0

Cover: The 1928 edition included a folded, onionskin paper, hand-drawn map of the Island; in 2005 the map was reproduced and personalized with the owner's name. The cartographer probably was a railway or government employee, and is very accurate when compared to later 20th century maps.

SALMON RIVERS OF NEWFOUNDLAND
South Coast – Burin to Garia Bay

Vol. 6 of 6

Introduction

SALMONIER RIVER, BURIN
LITTLE ST. LAWRENCE RIVER
GARNISH RIVER
LONG HARBOUR RIVER
CONNE RIVER
BAIE D'EST RIVER
BAY DU NORD RIVER
GREY RIVER
WHITE BEAR RIVER
GRANDY'S BROOK
CINQ CERF RIVER
LA POILE RIVER
BURNT ISLAND BROOK
GARIA BAY RIVER

31 other rivers and brooks

Palmer's 1928 SALMON RIVERS OF NEWFOUNDLAND remains popular. Much sought after, in the late 20th century, original copies were selling for as much as \$500. Mobilewords Limited re-published Palmer in 2005, using most of the information, maps and pictures and added a gazetteer of rivers in Labrador which Palmer didn't fish.

Palmer fished each river from its mouth to its headwaters, usually by boat, and occasionally, by train. His hand-drawn maps show the pools, falls, steadies, rocks, campgrounds, and other features. Most maps are oriented with the ocean at the bottom ascending up the page as one would go *upriver*.

In this extraction, Palmer's maps are annotated with general geographic information such as tributary names, where the river rises, topographic map references, and a list of pools taken from the map. Some items from 1928, which were left in the 2005 edition, are now removed.

Pictures from the 1928 edition, colour images of salmon flies found on the Internet and relevant map sections are included for reference.

continued

Someone sold the idea to the Newfoundland Government and it was published by a partnership between the government tourism department and the Newfoundland Railway. In some ways it is another in the long history of Newfoundland writing, tracing its roots back to the *Discourses* of John Mason, Richard Whitbourne and William Vaughan some three centuries earlier, extolling the island for its many natural virtues.

The original and re-published *Salmon Rivers of Newfoundland* included the whole island in one volume. Issued as a collectible in 2005, some purchasers indicated their interest was primarily in the rivers of smaller regions. This volume, then, is one of six extracted from the complete volume, each a separate region as set out here below.

West Coast – Port aux Basques to Bay of Islands, Vol. 1

West Coast – Bay of Islands to Strait of Bell Isle, Vol. 2

East Coast – Hare Bay to Exploits Bay, Vol. 3

East Coast – Notre Dame Bay to Bonavista Bay, Vol. 4

South Coast – Cape Race to Lawn Bay, Vol. 5

South Coast – Burin to Port aux Basques, Vol. 6



SALMONIER RIVER, BURIN

Location—

At the bottom of Burin Inlet on the west side of Placentia Bay.

Season—

July and August are the best months.

General Remarks—

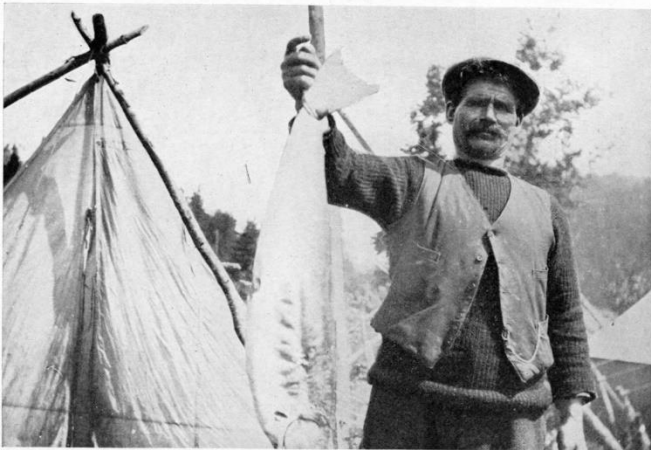
This river offers good fishing from its mouth to the pond. Salmon up to 15 lbs. in weight can be caught.

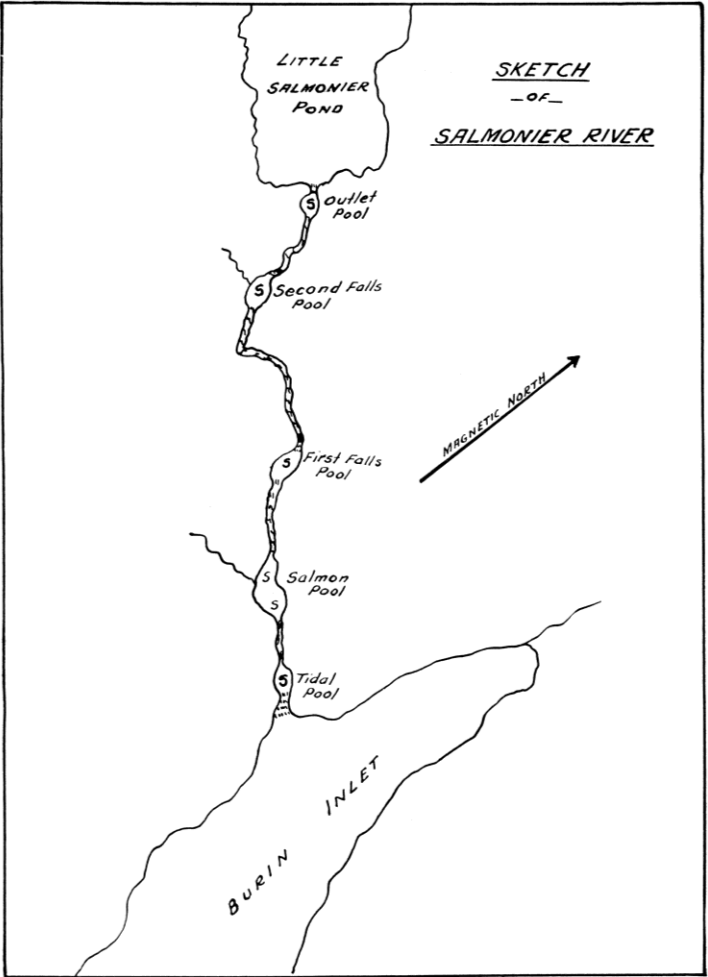
Notes:

Now Little Salmonier Brook. 1M/3

Pools:

Tidal Pool, Salmon Pool, First Falls Pool, Second Falls Pool, Outlet Pool





LITTLE ST. LAWRENCE RIVER

Location—

On the west side of Placentia Bay.

Accessibility—

The river is about 5 miles from St. Lawrence, a port of call for the bay steamer from Argentia. Boats for the run to the river can be hired.

Season—

15th June to the end of July.

General Remarks—

A fine fishing river with a good pool just above the falls at its mouth and many others between this and the ponds. Mr. Turpin, who lives at the river's mouth, is recommended to any one who desires to fish this river.

Notes:

Now St. Lawrence River

1L/14

Pools:

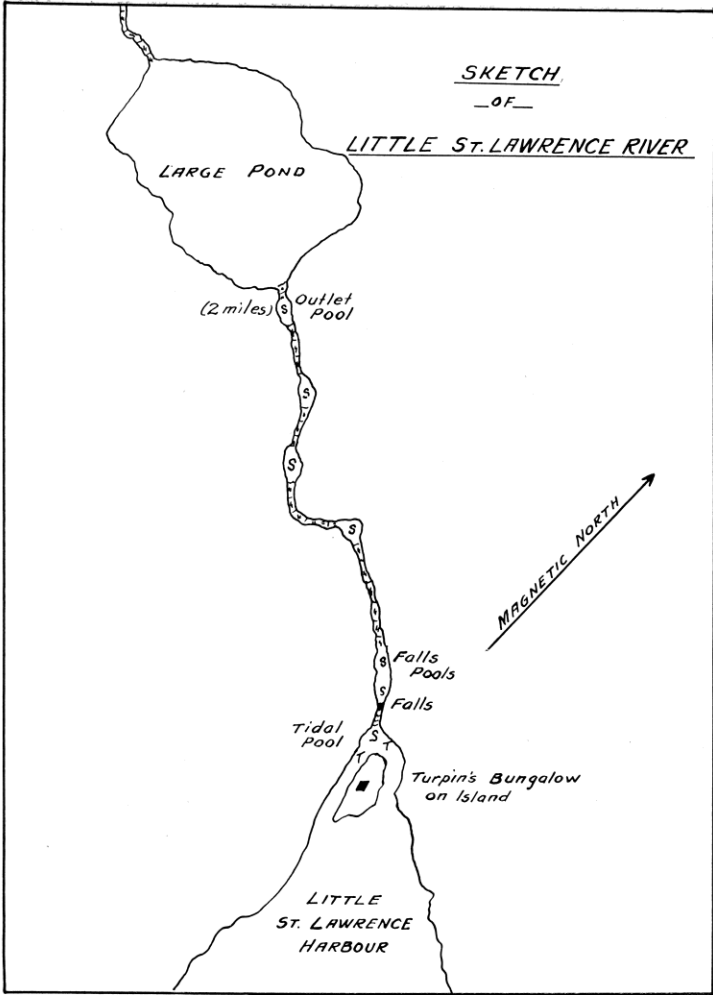
Tidal Pool, Falls Pools, 3 unnamed pools, Outlet Pool



SKETCH

-OF-

LITTLE ST. LAWRENCE RIVER



GARNISH RIVER

Location–

On the east side of Fortune Bay, on the South Coast.

Season–

15th July to end of August is the best time.

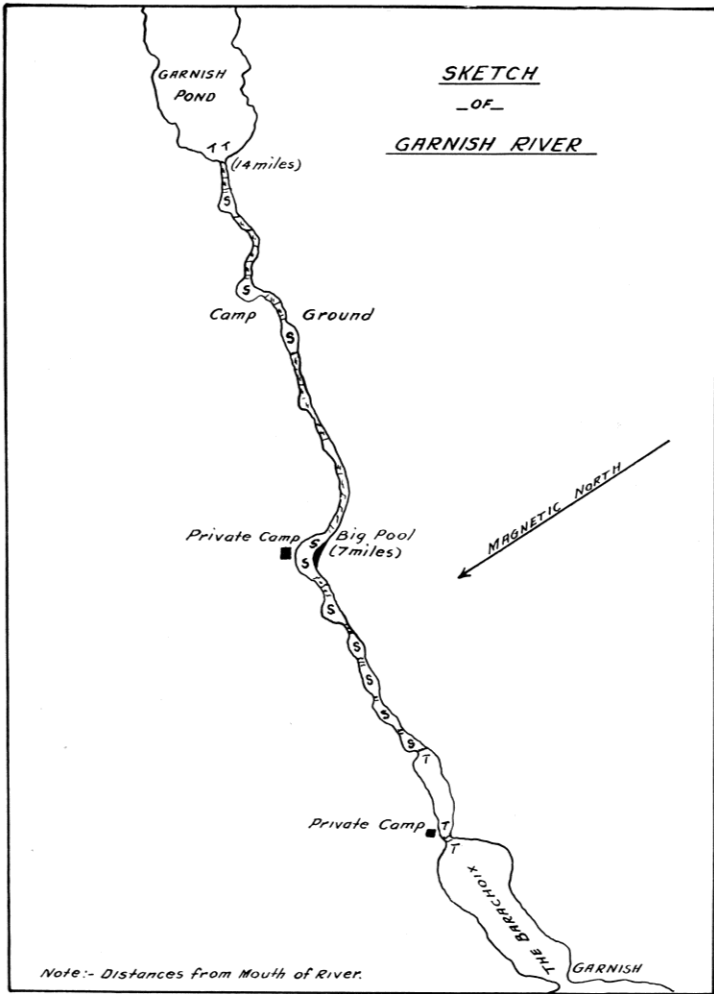
General Remarks–

This river empties into an inland bay of the sea known as The Barachois. Garnish is located at the entrance of The Barachois, 7 miles from the river's mouth. Good salmon pools are located on the river from its mouth to the pond, a total distance of 14 miles. Salmon up to 15 lbs. in weight frequent this river. Good sea-trout fishing can also be obtained

Pools:

Big Pool





LONG HARBOUR RIVER

Location—

At the bottom of Long Harbour, Fortune Bay, on the South Coast.

Season—

June and July are the best months.

General Remarks—

This river has six large branches the junctions of which, with the main river, make admirable fishing pools. Camping sites are numerous, and a splendid run of fish frequent the river; the early run (June) of fish are large, up to 40 lbs. in weight. Best fishing is from the mouth to second falls 14 miles up the river. A trail follows along the right bank of the river.

Tributaries:

Mitchells' Brook

Harehill Brook

Beaver Brook 1M/15

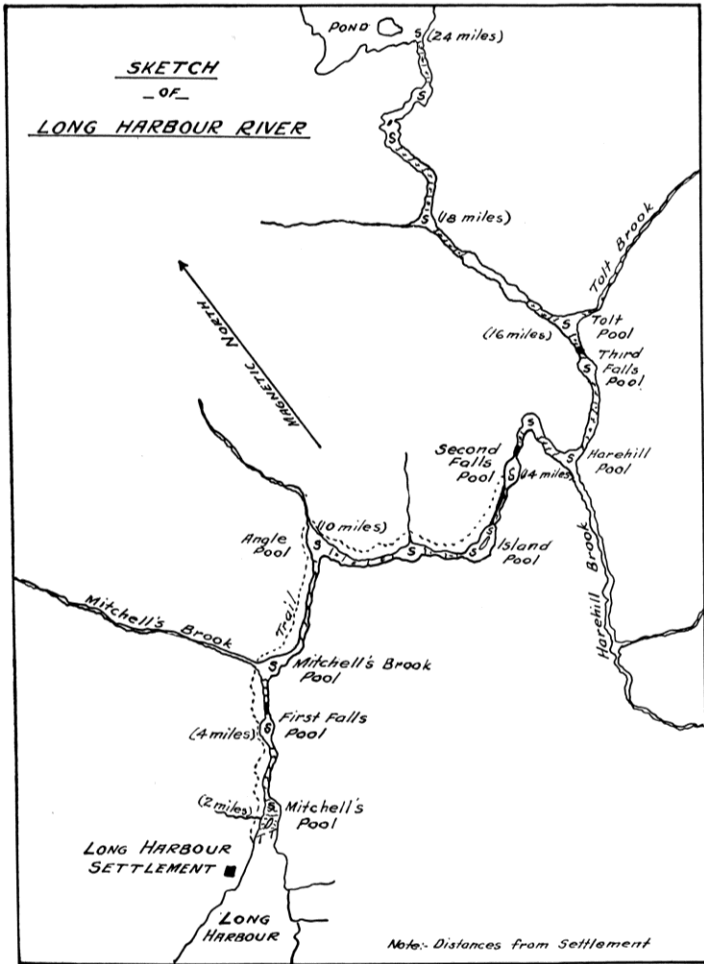
Kane Brook 1M/15

Tolt Brook 2D/2

Pools:

Mitchell's Pool, First Falls Pool, Mitchell's Brook Pool, Angle Pool, 1 unnamed pool, Island Pool, Second Falls Pool, 1 unnamed pool, Harehill Pool, Third Falls Pool, Tolt Pool, 2 unnamed pools





BAY DU NORD RIVER

Fortune Bay

Location—

At the bottom of North Bay, Belle Bay, Fortune Bay, on the South Coast.

Season—

June and July are the best months.

General Remarks—

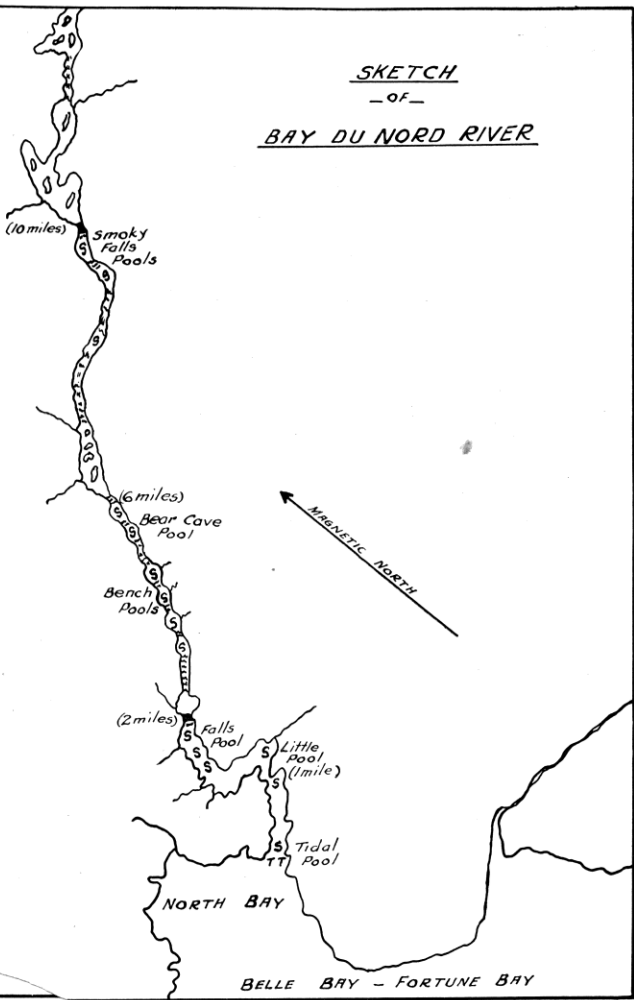
This is an excellent river for salmon and can be fished by dory from mouth to falls, over which distance (10 miles) there are many pools. Large salmon up to 40 lbs. in weight frequent this river.

Pools:

Tidal Pool, 1 unnamed pool, Little Pool, Falls Pool, Bench Pools, Bear Cave Pool, Smoky Falls Pools



SKETCH
- of -
BAY DU NORD RIVER



CONNE RIVER

Location—

At the bottom of the North East Arm of Bay d'Espoir, Hermitage Bay, on the South Coast.

Season—

July and August are the best months.

General Remarks—

This river contains numerous rapids and waterfalls which form splendid fishing pools in which the salmon naturally rest on their way up the river. The falls, being in the nature of ledges, make natural ladders for the salmon which are found over its entire length. They also go up Bernard's Brook for 2½ miles to the falls. Salmon ranging in weight from 5 to 20 lbs. are abundant.

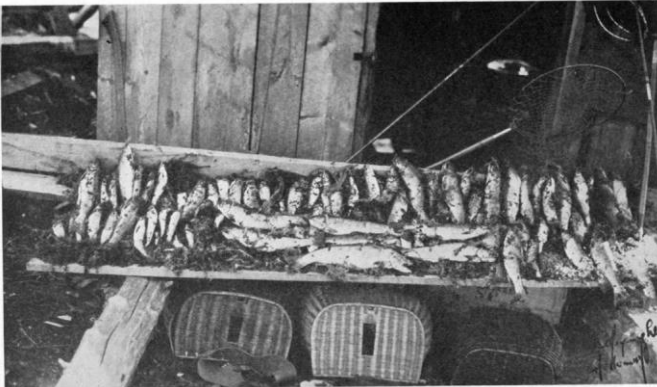
At Conne River is located the only Indian Reservation on the Island. These Indians from the settlement make excellent guides for the river.

Tributaries:

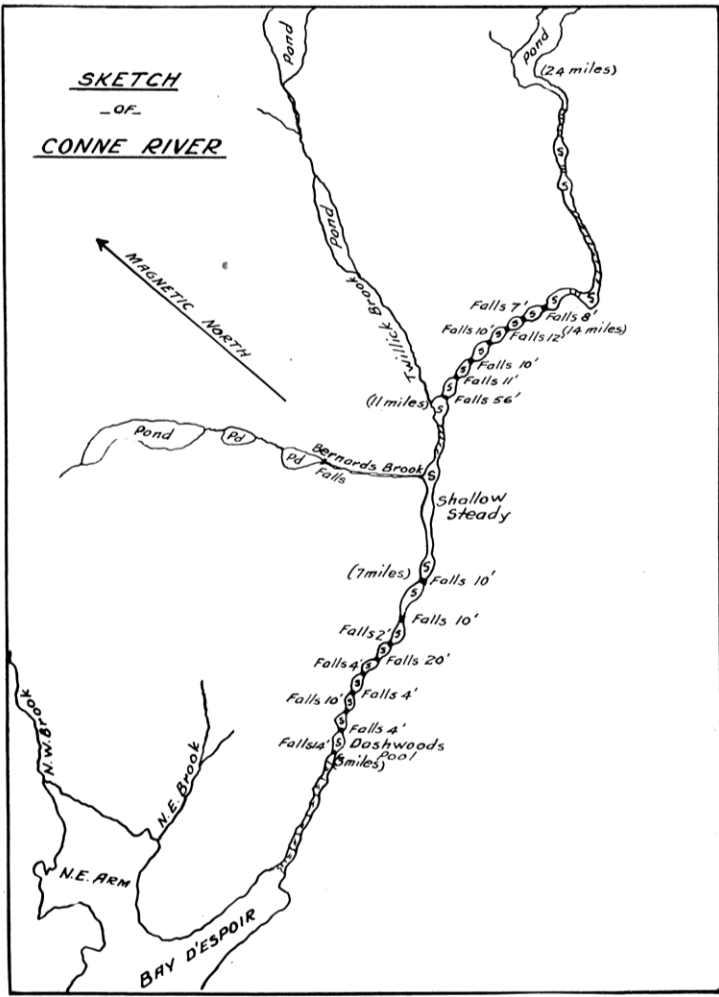
Bernard Brook	2D/4
Twillick Brook	2D/4

Pools:

Dashwoods Pool, 7 unnamed pools, Shallow Steady, 17 unnamed pools



SKETCH
-OF-
CONNE RIVER



BAIE D'EST RIVER

Location—

At the bottom of Baie d'Est, Hermitage Bay, on the South Coast.

Season—

July and August are the best months.

General Remarks—

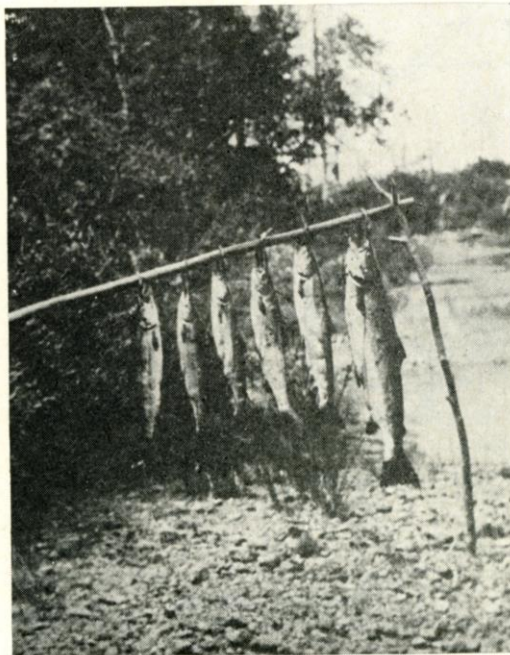
This river contains numerous small falls and rapids at the foot of which salmon naturally lie. Salmon from 5 to 20 lbs. in weight can be caught.

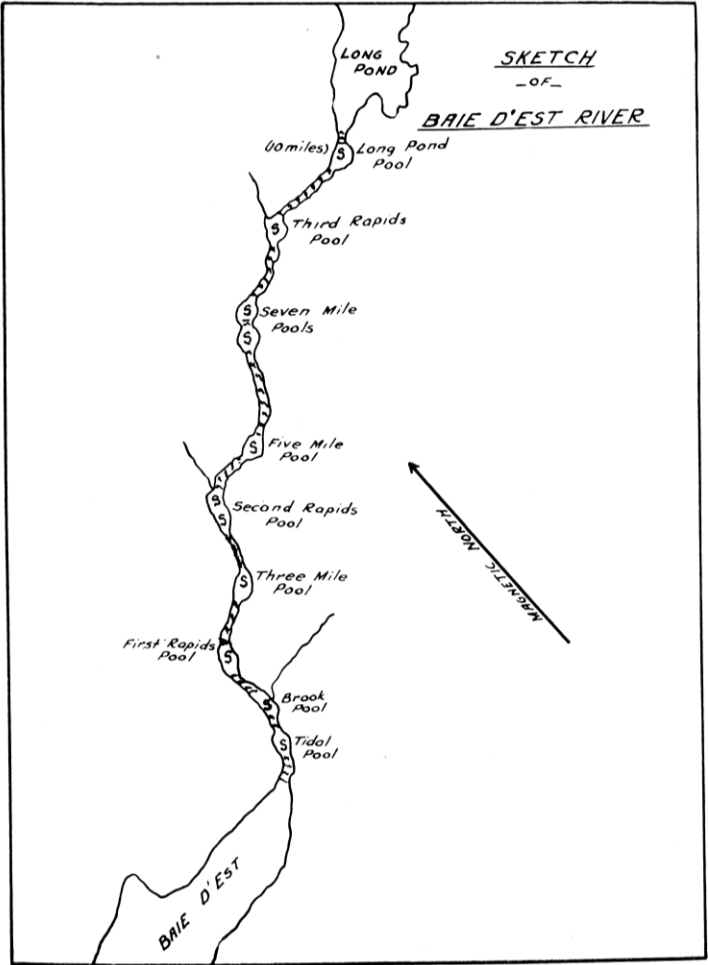
Notes:

Now Salmon River of East Bay. 11P/16.

Pools:

Tidal Pool, Brook Pool, First Rapids Pool, Three Mile Pool, Second Rapids Pool, one unnamed pool, Five Mile Pool, Seven Mile Pool, Third Rapids Pool, Long Pond Pool





BAY DU NORD RIVER

Location—

At the bottom of Bay du Nord, Bay d'Espoir, Hermitage Bay, on the South Coast.

Season—

July and August are good months.

General Remarks—

This rough river has numerous shutes and rapids, the foot of which make splendid salmon pools in which the salmon lie. A splendid run of salmon, up to 25 lbs. in weight, frequent this river.

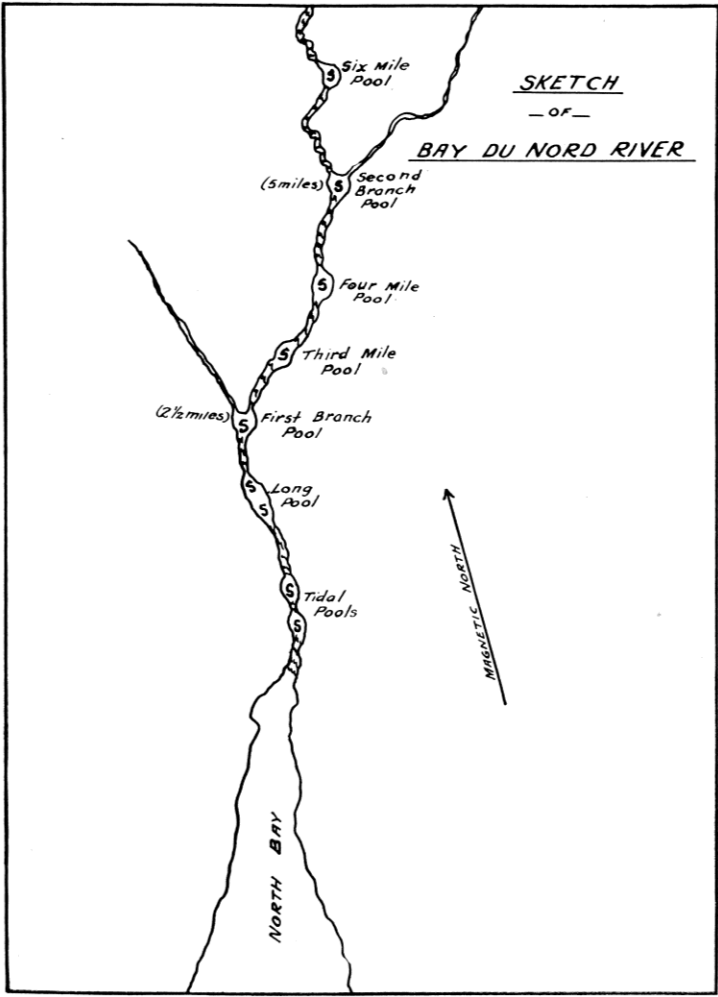
Notes:

Now D'Espoir Brook of North Bay. 11P/16

Pools:

Tidal Pools, Long Pool, First Branch Pool, Third Mile Pool, Four Mile Pool, Second Branch Pool, Six Mile Pool





GREY RIVER

Location–

On the South Coast at the bottom of Little or Grey River Bay.

Season–

June and July are the best months.

General Remarks–

This river offers splendid fishing on the main brook to Smoky Falls, and on its main tributary, Salmon Brook. Camping sites are numerous. The river is rough in places, but there are many excellent fishing pools. Dories can be used to advantage on the river, canoes not being necessary. The salmon range in weight from 5 to 25 lbs.

Tributaries:

Salmon Brook

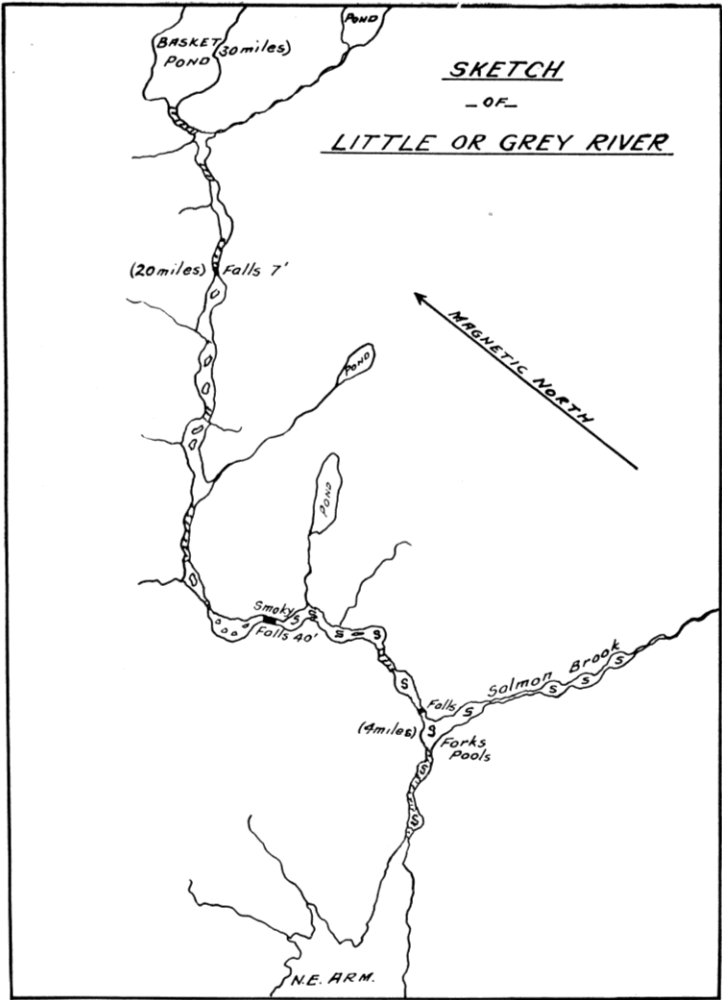
Note: Also called Little River.

Pools:

Forks Pools, 5 unnamed pools

Salmon Brook shows 3 unnamed pools





WHITE BEAR RIVER

Location—

At the bottom of White Bear Bay, on the South Coast.

Season—

June and July are the best months.

General Remarks—

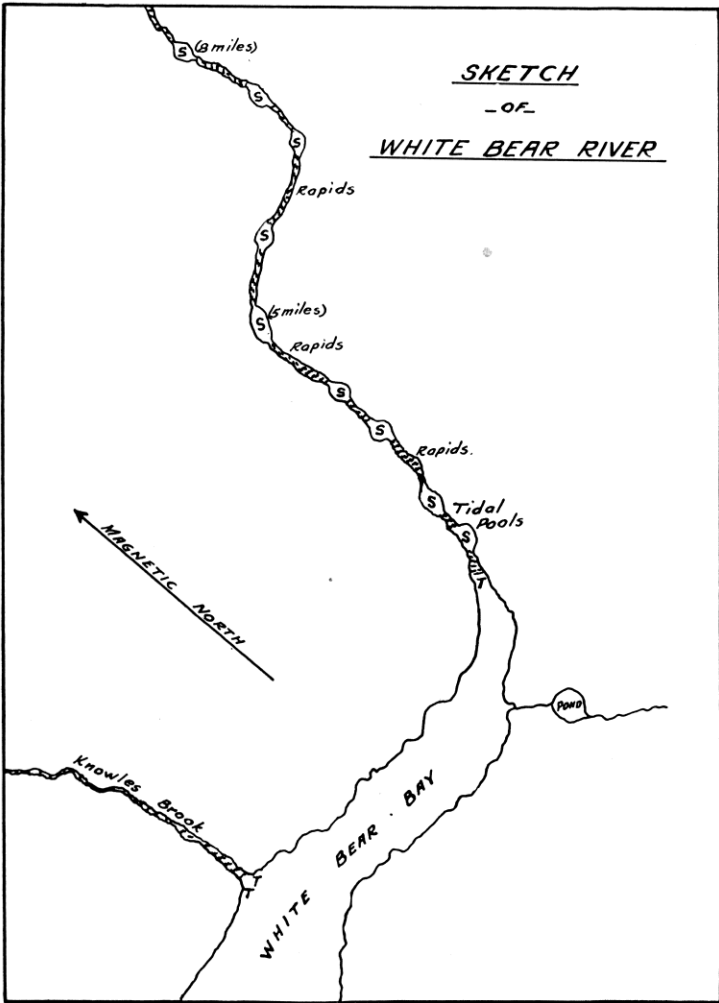
A good river, but rather rough with numerous rapids, at the foot of which the salmon naturally rest on their way to their spawning beds in the upper reaches. Salmon ranging in size from 5 to 25 lbs. have been caught.

Pools:

Tidal Pools, 8 unnamed pools



SKETCH
- OF -
WHITE BEAR RIVER



GRANDY'S BROOK

Location–

In the bottom of the North East Arm of Barachois Bay, on the South Coast.

Season–

June and July are the best months.

General Remarks–

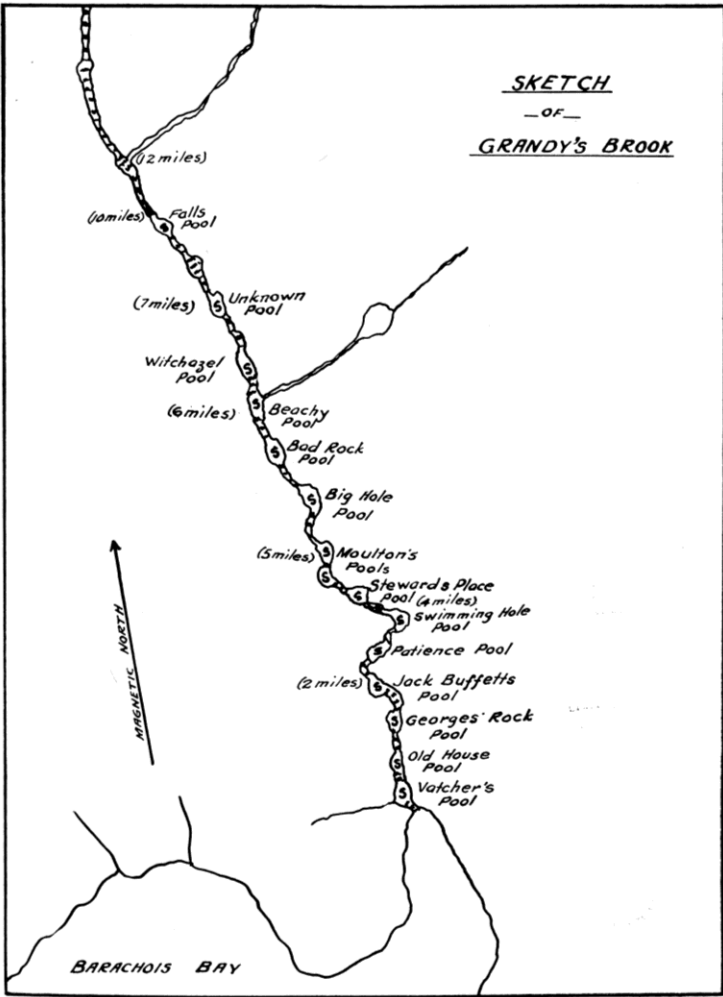
This is a splendid river for salmon, as fish of large size go up. Camping sites are numerous and there is also good sea trout fishing.

Pools:

Vatcher's Pool, Old House Pool, George's Rock Pool, Jack Buffet's Pool, Patience Pool, Swimming Hole Pool, Stewards Place Pool, Moulton's Pools, Big Hole Pool, Beachy Pool, Unknown Pool, Falls Pool



SKETCH
- OF -
GRANDY'S BROOK



CINQ CERF RIVER

Location—

At the bottom of Cinq Cerf Bay, on the South Coast.

Season—

June, July and August are good months.

General Remarks—

A fine river with excellent fishing to the Forks, over which distance there are many splendid pools. Camping sites are good and numerous. A fine run of salmon, of average weight of 8 lbs., frequent this river.

Tributaries:

Mouse Pond Brook 110/16

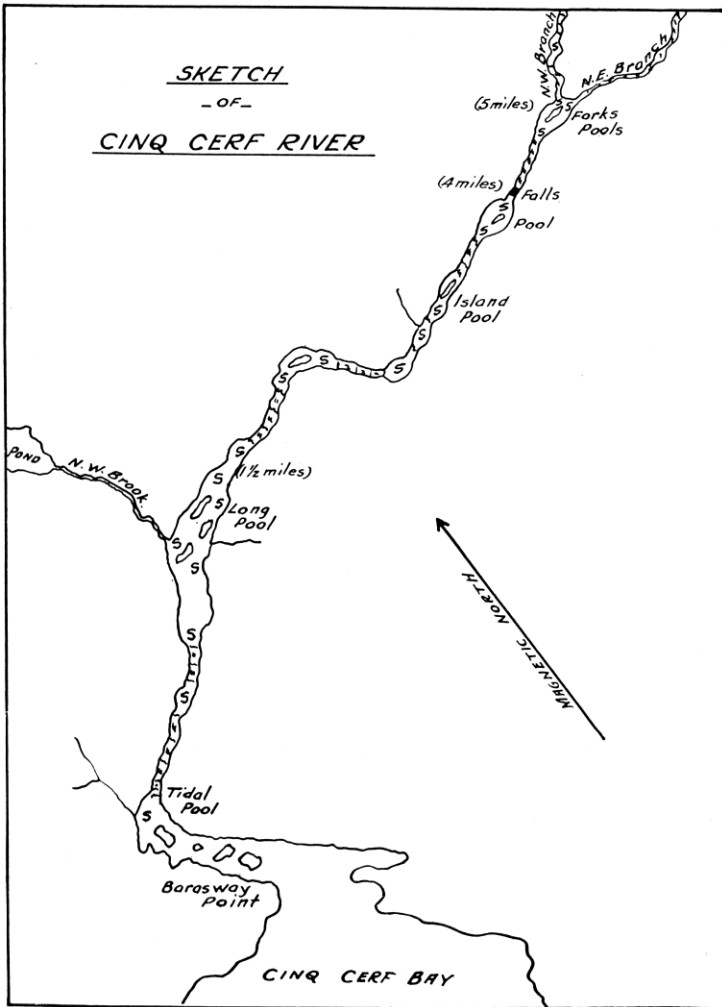
Two Way Brook 110/16

Pools:

Tidal Pool, Long Pool (6 pools), 5 unnamed pools, Island Pool, Falls Pool, Forks Pools



SKETCH
- OF -
CINQ CERF RIVER



LA POILE RIVER

Location–

At the bottom of La Poile Bay, on the South Coast.

Season–

15th June till 15th August.

General Remarks–

A large flat river for the first 3 miles, when the river narrows and there are some excellent fishing pools. Salmon of large size, up to 35 lbs. in weight, frequent this river, also large sea trout.

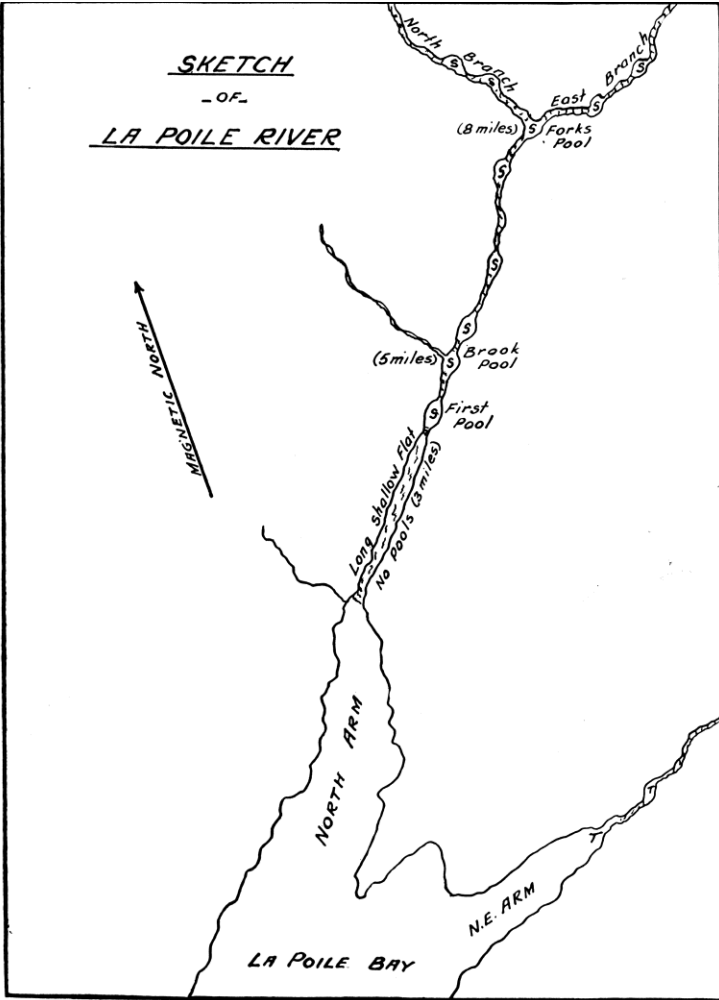
Tributaries:

Bunker Hill Brook	110/16
Deep Brook	110/16
Fox Hole Brook	110/16
Morg Keepings Brook	110/16
Northwest Brook	110/16
Rocky Ridge Brook	110/16
Round Hill Brook	110/16
Salmon Hole Brook	110/16
Two Way Brook	110/16
Woody Brook	110/16

Pools:

First Pool, Brook Pool, 3 unnamed pools, Forks Pool, 4 unnamed pools on North Branch and East Branch feeders

SKETCH
- OF -
LA POILE RIVER



BURNT ISLAND BROOK

Location—

On the South Coast near Port aux Basques.

Season—

Late June, July and first half of August is the best time for this river.

General Remarks—

This river contains many fine pools. Good camping sites are abundant. Salmon from 10 to 25 lbs. frequent this river. There is also good sea trout fishing in the early part of the season.

Pools:

First Pool, Second Pool, Third Pool, Fourth Pool, Fifth Pool, Sixth Pool



SKETCH
- OF -
BURNT ISLAND BROOK

River Widens
Here
Numerous
Shallow
Channels

(2 miles)
Camping
Ground

Sixth
Pool

Fifth
Pool

Fourth
Pool
(1 mile)

Third
Pool

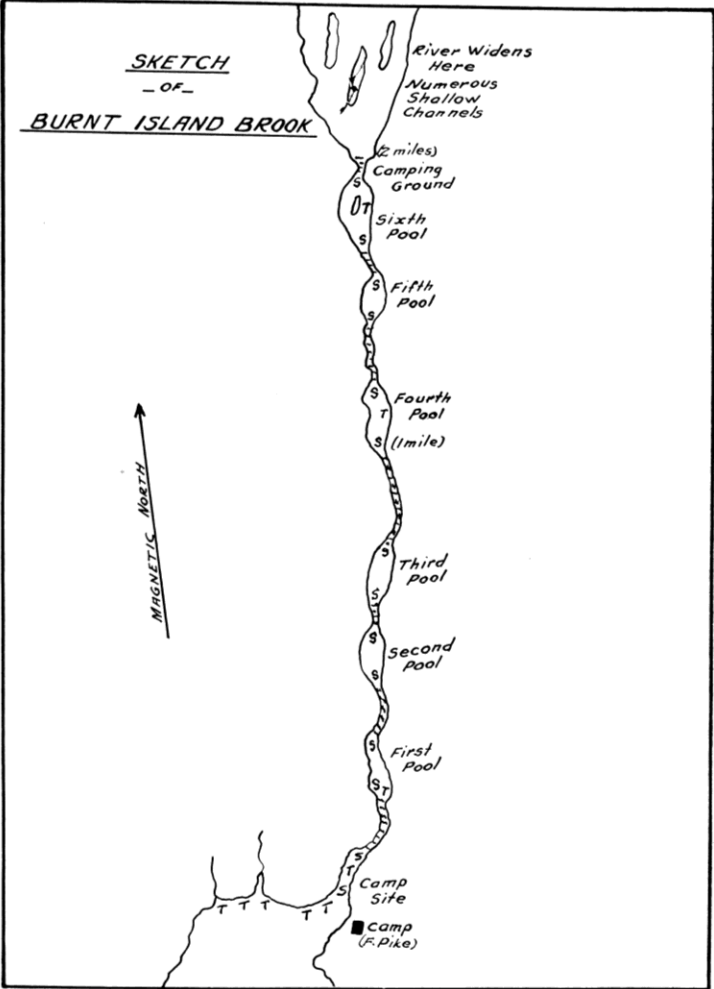
Second
Pool

First
Pool

Camp
Site

■ Camp
(F. Pike)

MAGNETIC NORTH



GARIA BAY RIVER

Location—

At the bottom of Garia Bay, on the South Coast.

Season—

June, July and August are all good months.

General Remarks—

A large river with excellent fishing pools. Camping sites are numerous and here is also good sea trout fishing. Salmon ranging in weight from 5 to 30 lbs. have been caught.

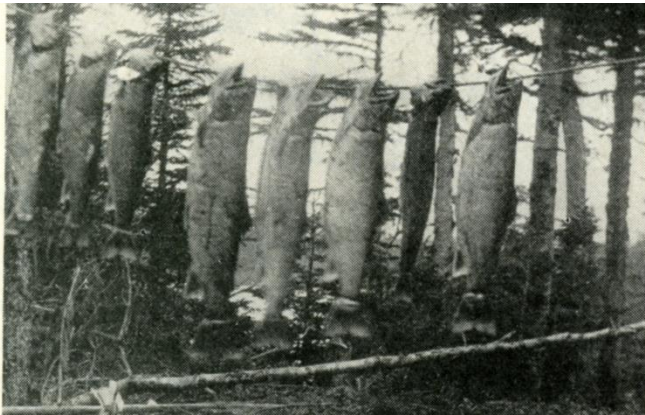
Notes:

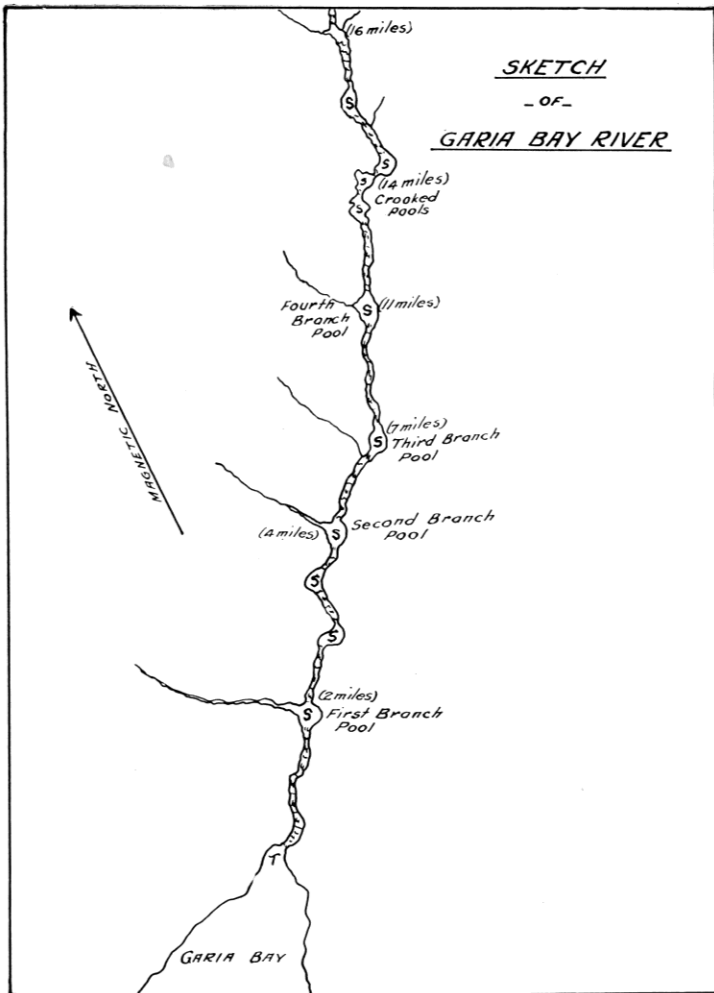
Now Garia Brook.

110/10

Pools:

First Branch Pool, Second Branch Pool, Third Branch Pool, Fourth Branch Pool, Crooked Pools, 2 unnamed pools





31 other rivers and brooks

MORTIER BAY RIVERS [1M/3]

In Mortier Bay, on the west side of Placentia Bay. The North West River is a good salmon river and contains many small pools. The other rivers offer good sea-trout fishing. The main road crosses many of these rivers.

BOAT HARBOUR BROOKS [1M/7]

At the bottom of Boat Harbour, on the west side of Placentia Bay. The North West Brook has a high fall at its mouth over which the fish cannot go. Good sea-trout fishing can be had at the pools below the falls. North East Brook is small but offers good sea trout fishing.

RUSHOON RIVER [1M/7]

At Rushoon, on the west side of Placentia Bay. A fine river for salmon and trout with many small but fine pools, easily traversed and fished as the banks are not wooded or bushed. The settlement is at the river's mouth.

RED HARBOUR RIVER [1M/6]

At the bottom of Red Harbour, on the west side of Placentia Bay. A good brook for sea trout and small salmon.

LITTLE LAWN RIVER [Now Lawn River; 1L/14]

In Little Lawn Harbour, at the entrance to Placentia Bay, on the west. A fair-sized river with a fine run of salmon and sea trout.

LAWN RIVER [1L/13]

At Great Lawn, at the entrance to Placentia Bay on the west. A fine river with many good pools. Passes through the settlement of Lawn. Has a fine run of salmon and sea trout.

LITTLE SALMONIER RIVER, LA MALINE [Now Salmonier River; 1L/13]

In La Maline Bay, at the entrance to Placentia Bay, west side. The settlement is at the river's mouth.

Contains good pools with nice run of salmon and trout.

PIERCEY BROOK [Now Lories Brook; 1L/13]

At Lories, 2 miles west of La Maline. Good for sea trout.

FORTUNE RIVER [1M/4]

At the entrance to Fortune Bay, on the east side. A nice river for salmon and sea trout. The settlement of Fortune is at the mouth of the river.

GRAND BANK BROOK [1M/4]

At Grand Bank, on the east side of Fortune Bay. This brook offers good sea trout fishing. The settlement of Grand bank is at its mouth.

TERRENCEVILLE AND GRAND LE PEIRE RIVERS [Now Terrenceville Brook and Grand La Pierre Brook; IM/10]

In the bottom of Fortune Bay. Both rivers offer fishing for sea trout with occasionally a few salmon.

LITTLE HARBOUR BROOK

Near the bottom of Fortune Bay, on the east side. Good for sea trout.

ENGLISH HARBOUR RIVER

Near the bottom of Fortune Bay, on the west side. Good for grilse and sea trout.

ST. KEEL'S BROOKS [now Salmon River, Simmons Brook, and South West Brook;1M/11]

In Cinque Island Bay, Fortune Bay. Three brooks, all of which offer good salmon and sea-trout fishing.

LITTLE RIVER [IM/13]

On the east side of Bay d'Espoir, near the bottom of the bay. A good river with some fine pools as far as the main falls, about 2 miles up. Dashwood, Tidal, and Falls Pools are noted. Falls Pool contains some fine salmon, with good sea trout in Tidal Pool.

FACHEAU BAY RIVER [Now spelled Facheaux]

At the bottom of Facheau Bay, on the South Coast. A splendid river with an abundance of large sea trout, 8 and 10 lbs., with fine pools as afar as the falls 4 miles from the sea.

DRAGON BAY BROOK [11P/9]

At the entrance to Facheau Bay, on the west side. Good for sea trout in July with some excellent pools, and an easy river to travel.

RIVERS, HARE BAY [Includes Morgan Brook, 11P/16]

In Hare Bay, on the South Coast.

North West River [Now Dolland Brook,11P/10] in North West Arm, an excellent river for salmon of large size up to 40 lbs. Good pools from mouth to falls, a distance of 4 miles. Also offers good sea-trout fishing. An early river best in late June and July. South East Arm, 2 brooks here that offer good sea-trout fishing.

RENCONTRE BROOKS [11P/10]

Two brooks here, one at the bottom of Little Bay, and the other in the bottom of Rencontre Bay. Both as good for sea trout.

CHALEUR BAY RIVER [11P/10]

In the bottom of Chaleur Bay. An excellent brook for sea trout.

AVIRON BAY [11P/10]

At the bottom of Aviron Bay. Good for sea trout.

LA HUME RIVER [La Hune Bay; 11P/10]

At the bottom of La Hume Bay. Good for grilse and sea trout.

OLD MAN'S BAY BROOKS

Flowing into Old Man's Bay. Several brooks here that offer good sea-trout fishing.

FLAT AND CUTS BROOKS

Between Grandy's Brook and Connoire Bay. Good brooks for sea trout.

CONNOIRE BAY RIVERS [11P/12–11P/13]

In Connoire Bay on the South Coast. Two large rivers, the North West being the best. Fish of large size frequent this river.

KNIFE BROOK

At the bottom of Knife Bay. A good brook for sea trout.

