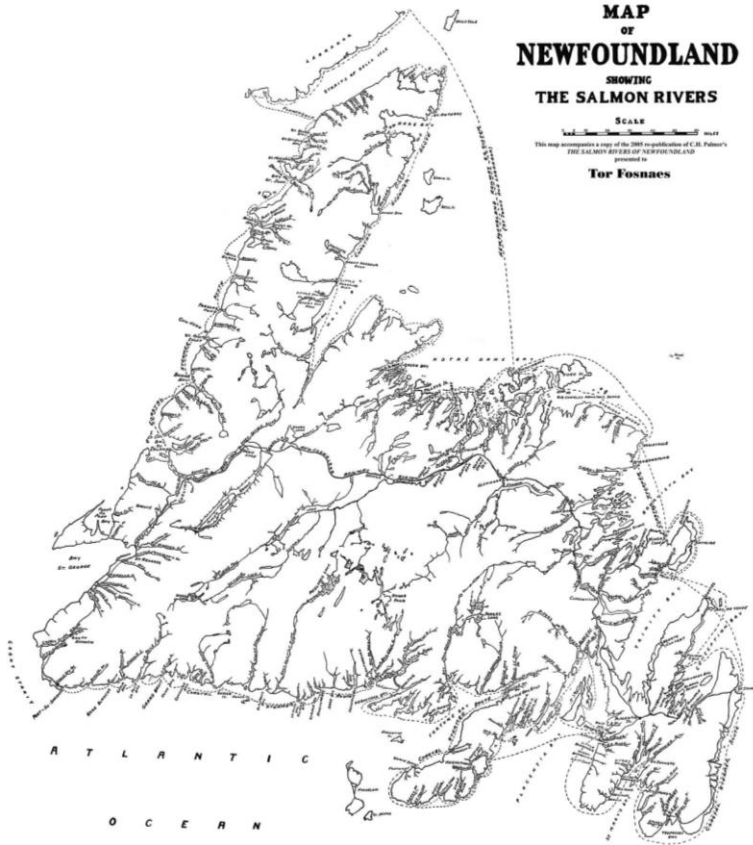


SALMON RIVERS OF NEWFOUNDLAND

East Coast – Notre Dame Bay to Conception Bay

from C.H. Palmer's 1928 book of the same name



Mobilewords Limited

© 2016

Publishing information
Library and Archives Canada Cataloguing in Publication

Palmer, C. H., author
Salmon rivers of Newfoundland.

Originally published in 1928 in 1 volume and re-published by Mobilewords Limited in 2005.

Contents: Volume 4. East coast--Notre Dame Bay to Trinity Bay
ISBN 978-0-9958183-1-6 (v. 4 : PDF)

1. Atlantic salmon fishing--Newfoundland and Labrador. 2. Rivers--Newfoundland and Labrador. I. Title.

SH685.P35 2016

799.17'5609718

C2016-907316-5

ISBN: 978-0-9958183-1-6

Cover: The 1928 edition included a folded, onionskin paper, hand-drawn map of the Island; in 2005 the map was reproduced and personalized with the owner's name. The cartographer probably was a railway or government employee, and is very accurate when compared to later 20th century maps.

SALMON RIVERS OF NEWFOUNDLAND
East Coast – Notre Dame Bay to Conception Bay

Vol. 4 of 6

Introduction

EXPLOITS RIVER
DOG BAY RIVER
CAMPBELLTON RIVER
GANDER RIVER
RAGGED HARBOUR BROOK
ANCHOR BROOK
DEADMAN'S BAY BROOK
INDIAN BAY BROOK
MIDDLE BROOK
GAMBO RIVER
TERRA NOVA RIVER
**NORTH WEST, SOUTH WEST
AND SALMON RIVERS**

Palmer's 1928 SALMON RIVERS OF NEWFOUNDLAND remains popular. Much sought after, in the late 20th century, original copies were selling for as much as \$500. Mobilewords Limited re-published Palmer in 2005, using most of the information, maps and pictures and added a gazetteer of rivers in Labrador which Palmer didn't fish.

Palmer fished each river from its mouth to its headwaters, usually by boat, and occasionally, by train. His hand-drawn maps show the pools, falls, steadies, rocks, campgrounds, and other features. Most maps are oriented with the ocean at the bottom ascending up the page as one would go *upriver*.

23 other rivers and brooks

In this extraction, Palmer's maps are annotated with general geographic information such as tributary names, where the river rises, topographic map references, and a list of pools taken from the map. Some items from 1928, which were left in the 2005 edition, are now removed.

Pictures from the 1928 edition, colour images of salmon flies found on the Internet and relevant map sections are included for reference.

continued

Someone sold the idea to the Newfoundland Government and it was published by a partnership between the government tourism department and the Newfoundland Railway. In some ways it is another in the long history of Newfoundland writing, tracing its roots back to the *Discourses* of John Mason, Richard Whitbourne and William Vaughan some three centuries earlier, extolling the island for its many natural virtues.

The original and re-published *Salmon Rivers of Newfoundland* included the whole island in one volume. Issued as a collectible in 2005, some purchasers indicated their interest was primarily in the rivers of smaller regions. This volume, then, is one of six extracted from the complete volume, each a separate region as set out here below.

West Coast – Port aux Basques to Bay of Islands, Vol. 1

West Coast – Bay of Islands to Strait of Bell Isle, Vol. 2

East Coast – Hare Bay to Exploits Bay, Vol. 3

East Coast – Notre Dame Bay to Conception Bay, Vol. 4

South Coast – Cape Race to Lawn Bay, Vol. 5

South Coast – Fortune Bay to Port aux Basques, Vol. 6



EXPLOITS RIVER

Location–

On East Coast, empties into Exploits Bay of Notre Dame Bay.

Season–

Good fishing can be had during July and August.

General Remarks–

This is the largest river in Newfoundland, ... 200 miles in length. An excellent ... trip can be had, starting from the mouth of the river, to Red Indian Lake, a few portages being necessary, ... [which] can be followed to its head, passing on through Lloyd's Lake to King George Fourth Lake. From here a portage of about 5 miles lands one on Victoria Lake and then down Victoria River to Millertown, at the foot of Red Indian Lake. A total distance of approximately 275 miles. Good salmon fishing can be obtained as far as Grand Falls, and above splendid trout and Ouananiche fishing. ... River boats or canoes are essential for a good fishing trip on the river.

Tributaries:

| | |
|----------------------|--------|
| Great Rattling Brook | 2D/13 |
| Green Woods Brook | 2D/13 |
| Sandy Brook | 2D/13 |
| Stony Brook | 2D/13 |
| Wigwam Brook | 2D/13 |
| Middle Brook | 2D/13 |
| Junction Brook | 12A/16 |
| Noel Paul's Brook | 12A/16 |
| Pamehac Brook | 12A/16 |
| Black Duck Brook | 12A/16 |

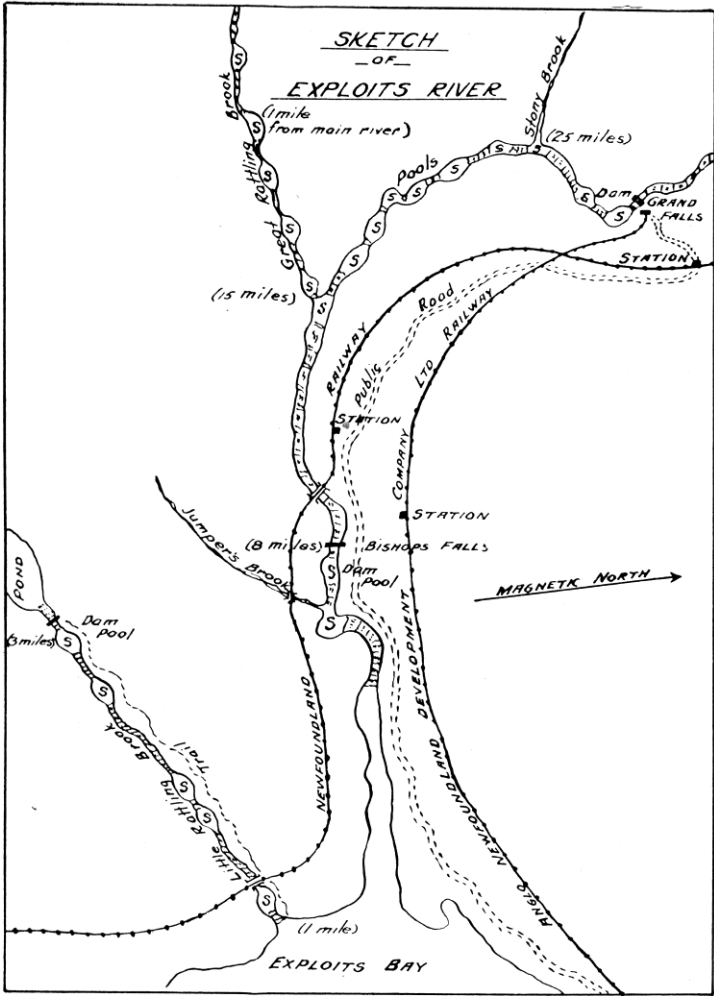
Notes:

Many more tributaries are not listed here.

Enhancement has created salmon habitat above Grand Falls.

Pools:

Dam Pool, 12 unnamed pools



DOG BAY RIVER

Location—

At the bottom of Dog Bay, Notre Dame Bay, on the East Coast.

Season—

July and August are the best months.

General Remarks—

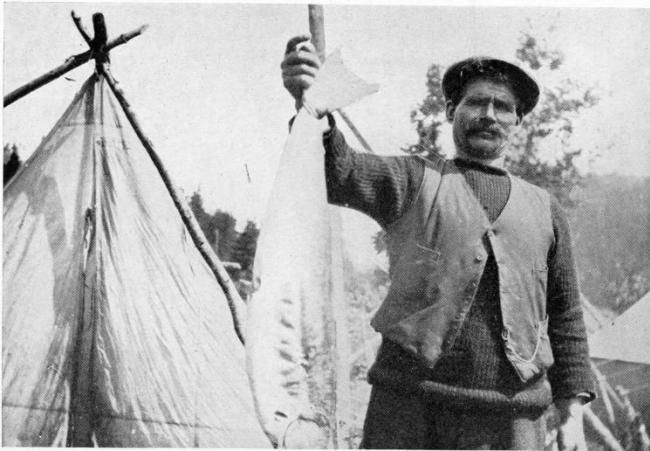
Numerous pools are located on this river as far as Punt Pond and good camping sites are numerous. The river offers good canoeing to head of pond. A nice run of medium-weight (10 lbs.) salmon frequent this river.

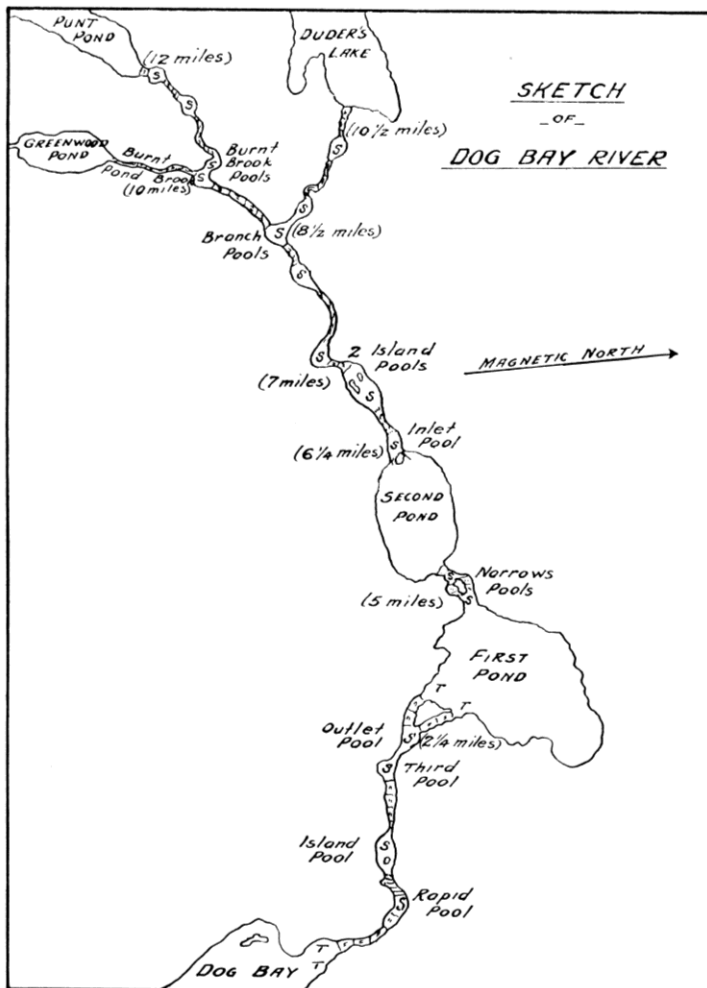
Notes:

Unnamed on 2E/7

Pools:

Rapid Pool, Island Pool, Third Pool, Outlet Pool, Narrows Pool, Inlet Pool, 2 Island Pool, Branch Pools, Burnt Brook Pools





CAMPBELLTON RIVER

Location—

In Lewisport Bay, Notre Dame Bay, on the East Coast.

Season—

July and August.

General Remarks—

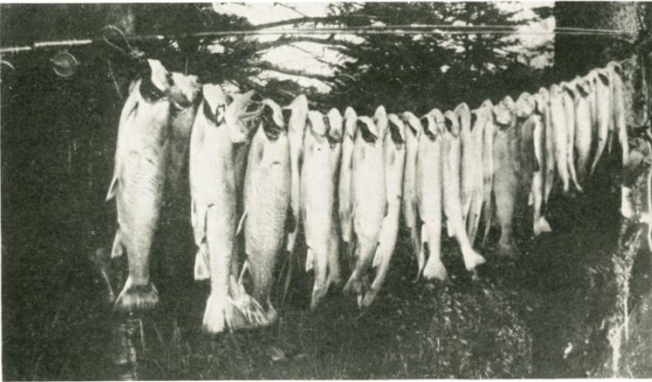
This river is 10 miles out the Bay and can be reached by coastal boat S.S. "Clyde" in an hour, or by motor boat from Lewisport where boats can be hired. This river offers good salmon (medium-sized) and sea-trout fishing.

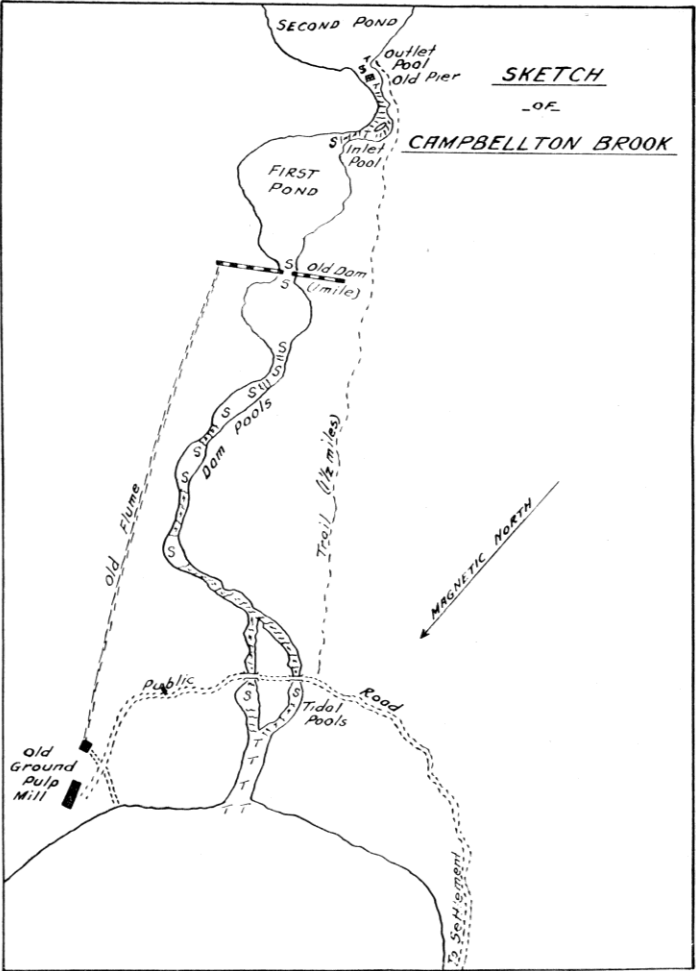
Notes:

Now Indian Arm Brook. 2E/2

Pools:

Tidal Pools, Dam Pools, Inlet Pool, Outlet Pool





GANDER RIVER

Location—

On the East Coast, flows into Gander Bay, Notre Dame Bay.

Season—

From 15th July till close of season 15th September.

General Remarks—

From Glenwood down the river to the sea, a distance of 25 miles, offers an excellent canoe and fishing trip.

There are four narrow ponds or steadies on the Main River. The salmon pools are numerous and good camping sites readily found. *Salmon Brook* flows into the Main River near Glenwood. This brook also contains some good pools. River boats or canoes are essential. *North West River* and *South West River* flow into Gander Lake about 10 miles from Glenwood and during the latter part of the season offer excellent fishing.

A large and heavy run of fish frequent this river. Any fish over 30 lbs. in weight have been caught.

Tributaries:

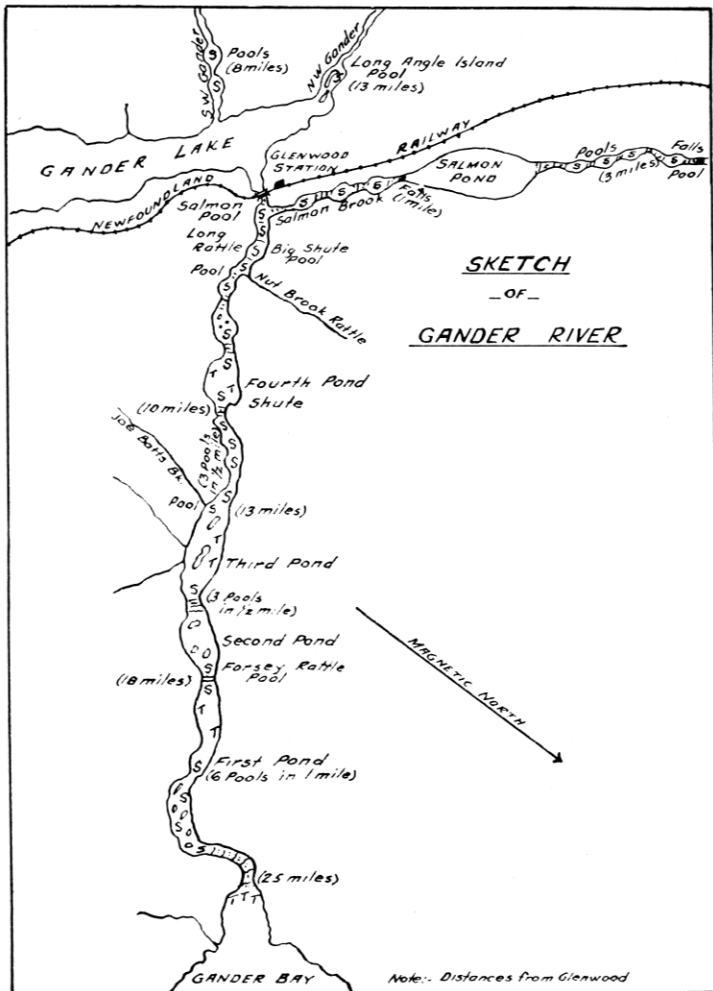
| | |
|-------------------|------|
| Bellman's Brook | 2E/2 |
| Weir's Brook | 2E/2 |
| Island Pond Brook | 2E/2 |
| Joe Batts Brook | 2E/2 |
| Millers Brook | 2E/2 |
| Jonathan's Brook | 2E/1 |
| Salmon River | 2E/2 |

Notes:

"The Gander River rises in the Partridgeberry Hills" refers to Northwest Gander River. It and Southwest Gander River are the main feeders of Gander Lake

Pools:

Forsey Rattle Pool, Long Rattle Pool, Big Shute Pool, Salmon Pool, Long Angle Island Pool, Falls on Salmon Brook Pool



RAGGED HARBOUR BROOK

Location–

In Ragged Harbour on the East Coast.

Season–

July and August are the best months.

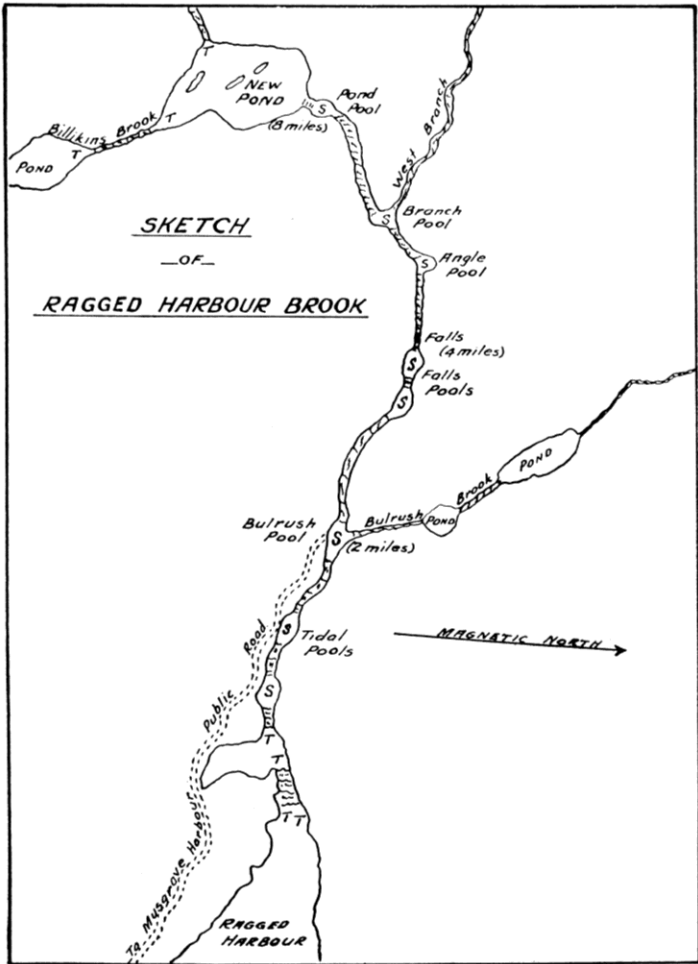
General Remarks–

This river has some fine pools over a distance of about 8 miles to New Pond. A fine run of medium-weight (10 lbs.) salmon and trout frequent this river.

Pools:

Tidal Pools, Bulrush Pool, Falls Pools, Angle Pool, Branch Pool, Pond Pool





ANCHOR BROOK

Location—

At the entrance to Sir Charles Hamilton Sound on the East Coast.

Season—

July and August are the best months.

General Remarks—

This is a wide flat brook with numerous pools on the main brook and its tributaries. It is connected by road to Ragged Harbour and Deadman's Bay. The bridge pools are noted as being good pools on this brook. The run of salmon is large, but fish over 10 lbs. are scarce.

Notes:

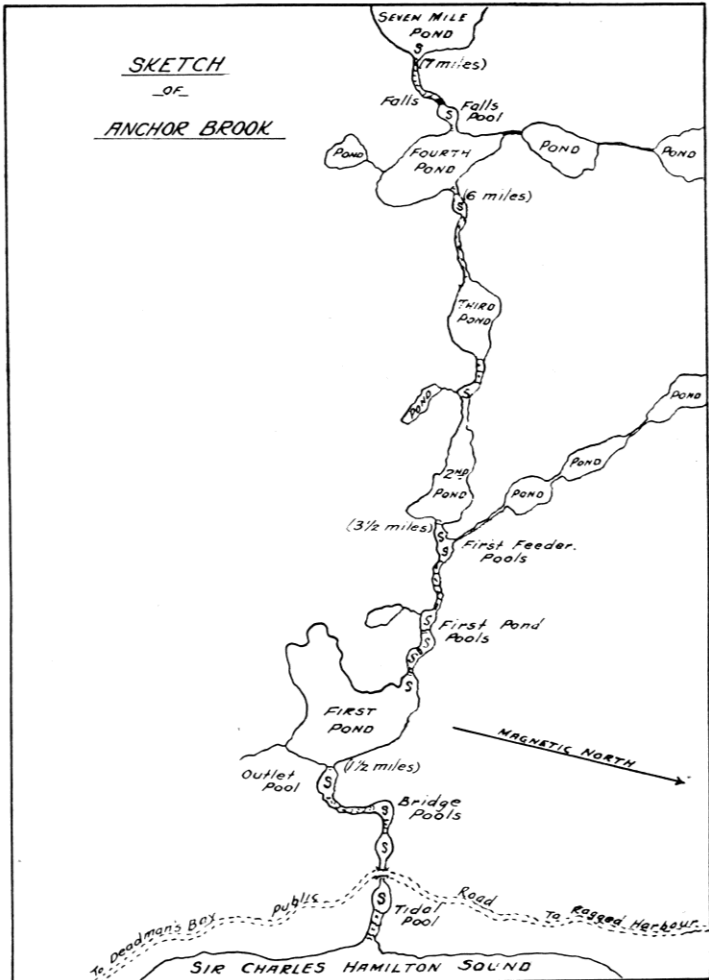
Part of the Anchor Brook-Deadman's Brook drainage system.

Pools:

Tidal Pool, Bridge Pools, Outlet Pool, First Pond Pools, First Feeder Pools, Falls Pool



SKETCH
OF
ANCHOR BROOK



DEADMAN'S BAY BROOK

Location—

In Deadman's Bay on the East Coast.

Season—

July and August are good months.

General Remarks—

From the sea to Deadman's Pond there are some fine pools, those in the first 2 miles being noted for their good fishing. A fine run of medium fish frequent this brook.

Notes:

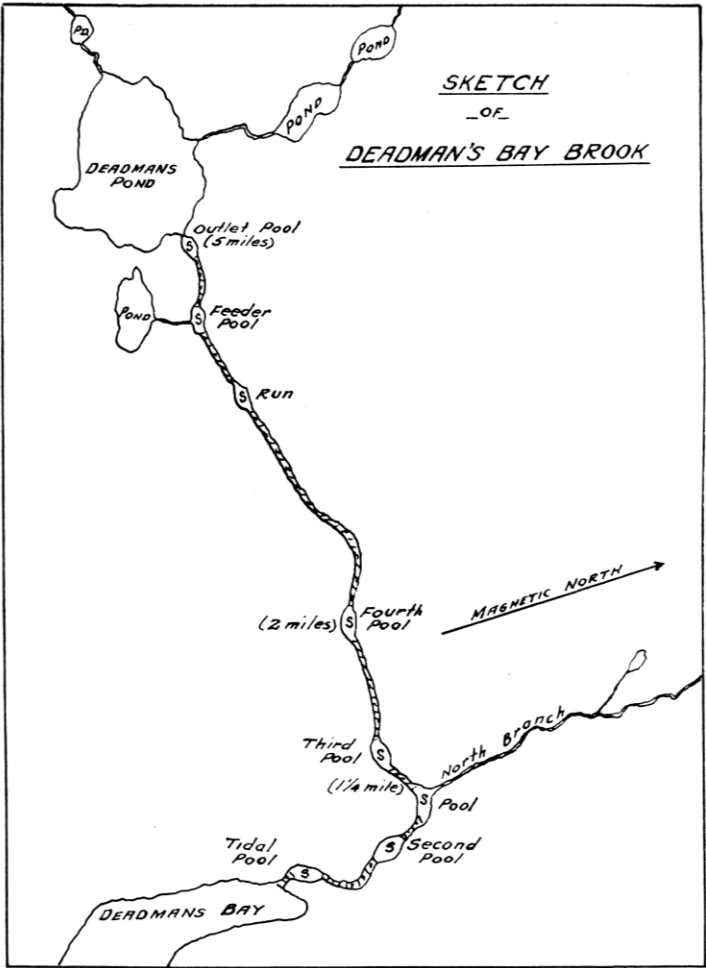
Now Deadman's Brook.

Part of the Anchor Brook-Deadman's Brook drainage system.

Pools:

Tidal Pool, Second Pool, Third Pool, Fourth Pool, Feeder Pool, Outlet Pool





INDIAN BAY BROOK

Location—

At the bottom of Indian Bay, Bonavista Bay, on the East Coast.

Season—

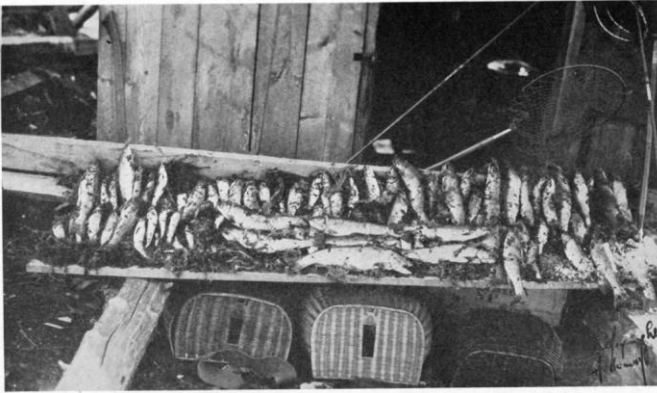
July and August are the best months.

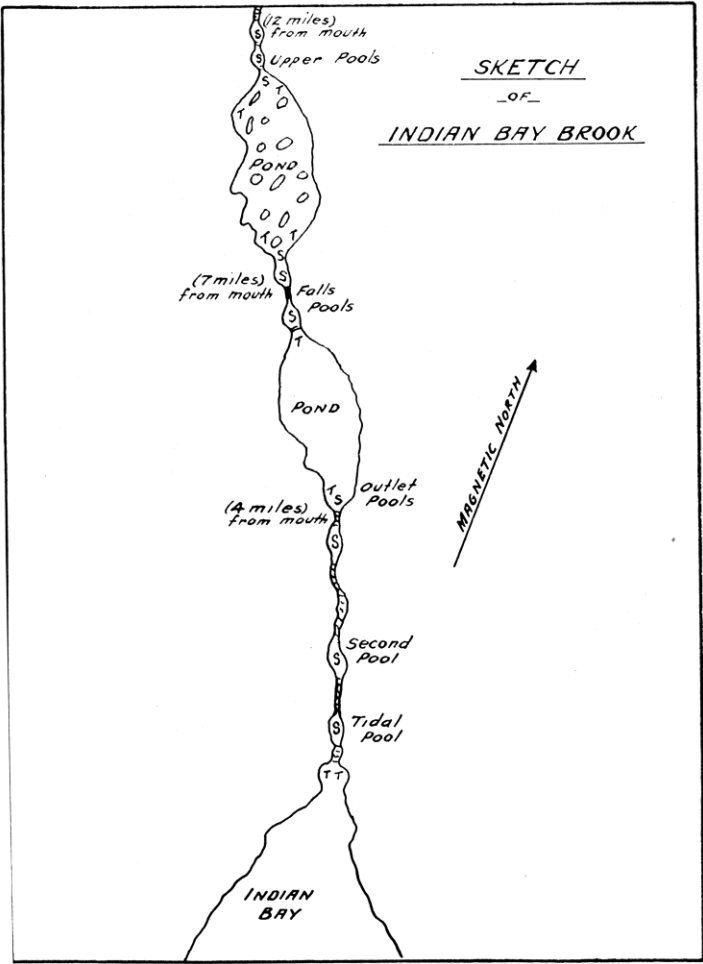
General Remarks—

A nice river and the pools are readily accessible by canoe. A large run of medium-weight salmon (10 lbs.) and sea trout frequent this river.

Pools:

Tidal Pool, Second Pool, Outlet Pools, Falls Pools, Upper Pools





MIDDLE BROOK

Location—

In Freshwater Bay, Bonavista Bay, on the East Coast.

Season—

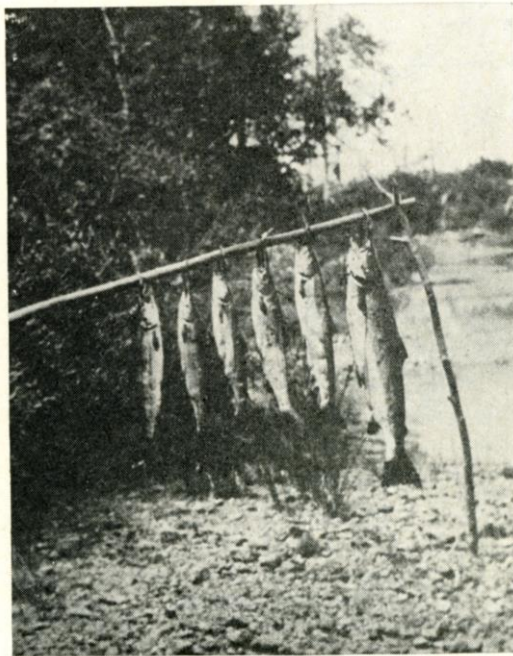
July and August are the best months.

General Remarks—

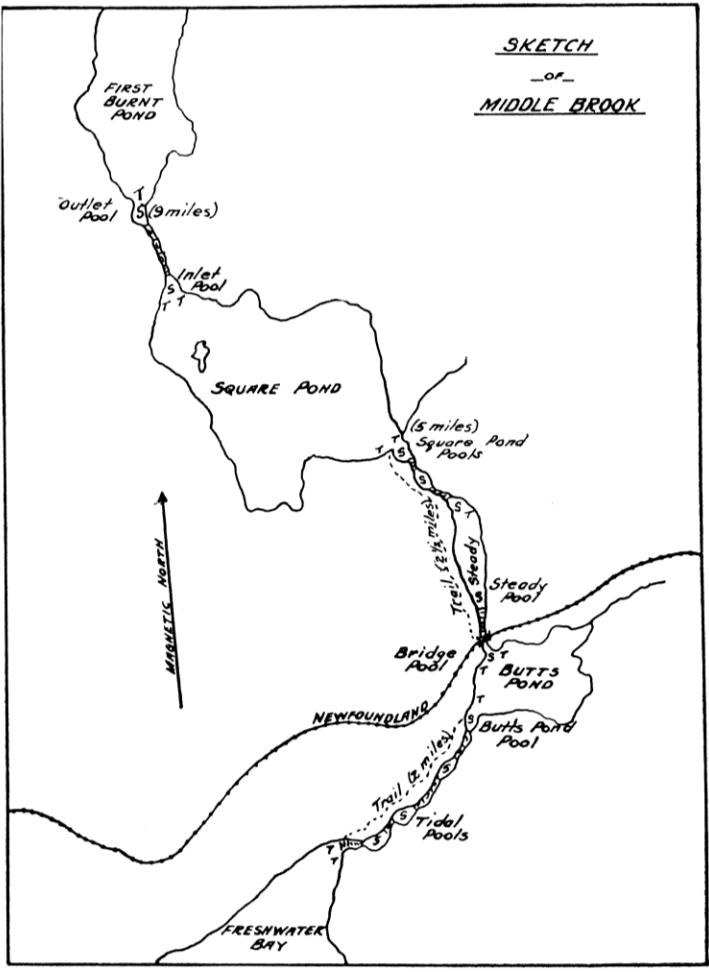
This river contains some fine salmon pools which are accessible by trails. A heavy run of medium salmon and sea trout frequent the river, and being only 4 miles from Gambo can be fished daily out of there.

Pools:

Tidal Pools, Butts Pond Pool, Bridge Pool, Steady Pool, Square Pond Pools, Inlet Pool, Outlet Pool



SKETCH
- of -
MIDDLE BROOK



GAMBO RIVER

Location–

In the bottom of Freshwater Bay, Bonavista Bay, on the East Coast.

Season–

July and August are good months.

General Remarks–

This is a fine large river and fishing can be undertaken with ease as all the pools can be reached by boat from Gambo. A large and heavy run of salmon frequent this river. There is also good sea-trout fishing. Salmon up to 30 lbs. in weight have been caught. Boats or canoes are essential.

Gambo being at the river's mouth, and the lower pools being accessible by boat, the angler can stay at Gambo and fish the river daily.

Tributaries:

Mint Brook

Notes:

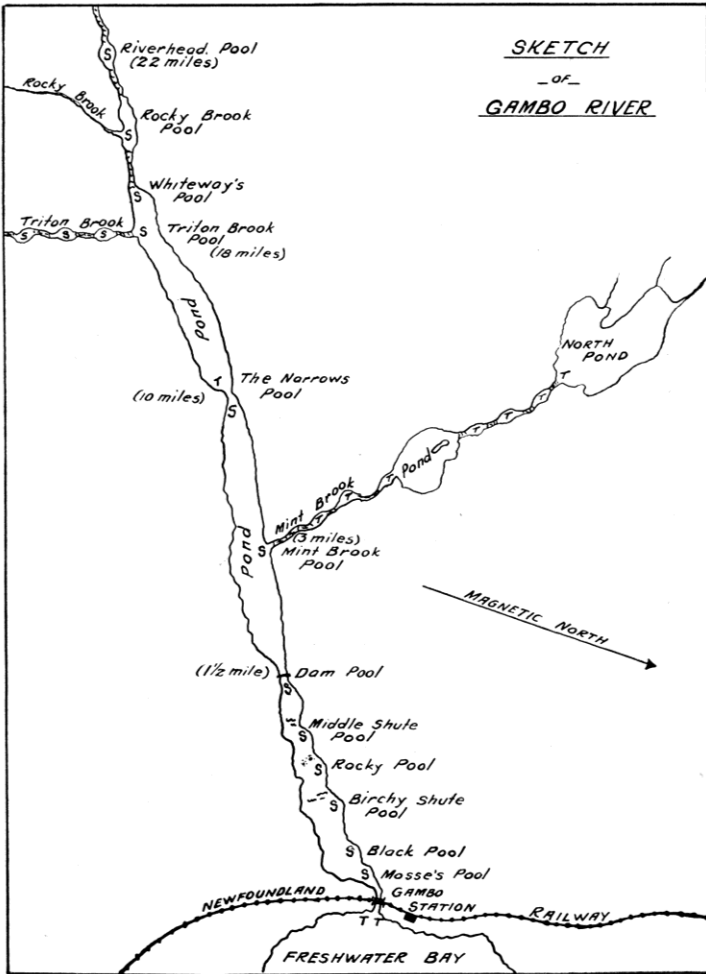
Now Gambo Brook.

Flows from Gambo Pond to the sea. 2D/9

Pools:

Mosse's Pool, Black Pool, Birchy Shute Pool, Rocky Pool, Middle Shute Pool, Dam Pool, Mint Brook Pool, The Narrows Pool, Triton Brook Pool, Whiteway's Pool, Rocky Brook Pool, Riverhead Pool

SKETCH
- of -
GAMBO RIVER



TERRA NOVA RIVER

Location—

On the East Coast, this river flows into the middle arm of Alexander Bay, Bonavista Bay.

Season—

July and August are the best months.

General Remarks—

This is one of the large rivers of the Island and good fishing can be had from its mouth to the falls, a distance of 7 miles. Sea trout can also be caught. Camping sites are numerous. The run of salmon is large, fish up to 30 lbs. in weight having been caught

Tributaries:

Maccles Brook

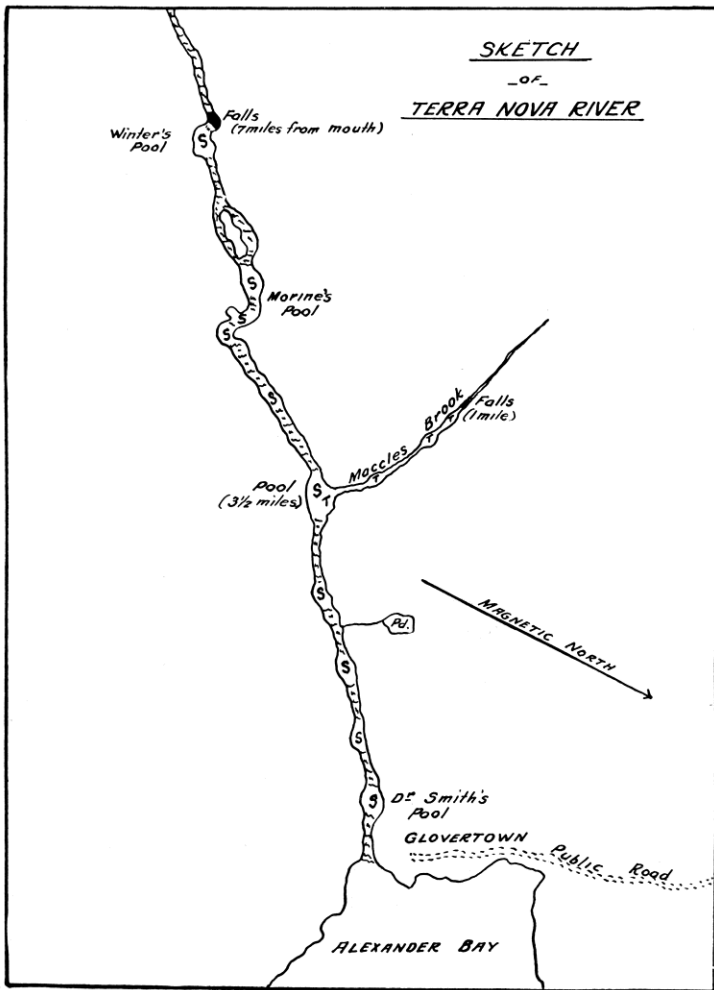
2D/9

Pools:

Dr. Smith's Pool, Marine's Pool, Winter's Pool, 8 unnamed pools



SKETCH
- of -
TERRA NOVA RIVER



NORTH WEST, SOUTH WEST AND SALMON RIVERS, PORT BLANDFORD

Location–

These three rivers are located at the bottom of Clode Sound, Bonavista Bay.

Season–

July and August are good months.

General Remarks–

A sportsman fishing here has 3 rivers, all readily accessible from the railway. Each river offers good salmon and sea-trout fishing over a distance of approximately 5 miles from their respective mouths and can be fished daily from Port Blandford. A fine run of medium-sized (10 lbs.) salmon frequent these rivers.

Notes:

Now Salmon Brook

Pools:

North West River

Tidal Pool, Bridge Pools, Fourth Pool, Fifth Pool

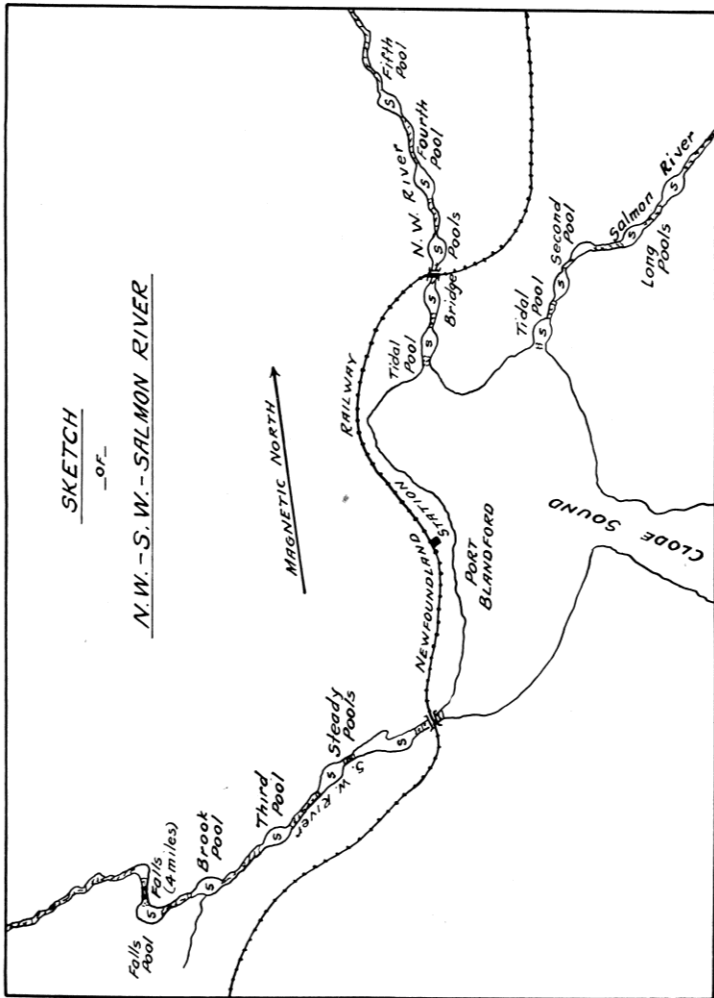
Pools:

South West River

Steady Pools, Third Pool, Brook Pool



SKETCH
-OF-
N. W. - S. W. - SALMON RIVER



23 other rivers and brooks

STRAIGHT AND WINDMILL BROOKS [2F/5-2F/6]

On what is known as the Straight Shore, at the entrance to Sir Charles Hamilton Sound. Good for medium-sized salmon and sea trout.

TRAVERSE BROOK [2D/16]

About 10 miles from the bottom of Freshwater Bay, Bonavista Bay. A good brook for salmon and sea trout.

NORTH WEST BROOK [2D/9]

At the bottom of North West Arm of Alexander Bay, Bonavista Bay. An excellent brook for sea trout.

NEWMAN'S SOUND RIVER [Saltons Brook, Big Brook, and Minchin Brook all flow into Newman Sound; 2C/12]

At the bottom of Newman's Sound, Bonavista Bay. A good river for salmon and sea trout and nice for travelling and fishing.

GOOSE BAY BROOK [Now Southwest Brook; 2C/5]

At the bottom of Goose Bay, Clode Sound, Bonavista Bay. Good for grilse and sea trout.

SOUTHWARD BAY BROOK [Now Southern Bay Brook; 2C/5]

At the bottom of Southward Bay, Bonavista Bay. Good for small salmon and sea trout.

NORTH WEST, SOUTH WEST, AND SALMON RIVERS [Now Rattling Brook flows into Northwest Arm and Salmon Cove River; 2C/6]

On the northwest side of Trinity Bay. The North West River is readily accessible from Port Rexton, the South West River from Trinity, and Salmon River from English Harbour, all stations on the Bonavista Branch of the Newfoundland Railway. They are all good rivers for fishing, Big Pond, Big Rattle and Trepassey Steadies, 3 pools on Salmon River, being well known for their fishing.

TROUTY BROOK [2C/6]

At Trouty on west side of Trinity Bay. An excellent brook for sea trout. The settlement is at the mouth of the brook.

POPE'S HARBOUR, RIDER'S AND SHOAL HARBOUR RIVERS [2C/4]

In Smith Sound, Trinity Bay. All good brooks for sea trout.

NORTH WEST BROOK [Now Southwest Arm Brook; flows into Deer Harbour; 1N/13]

Bottom of South West Arm, Trinity Bay. Good for salmon and sea trout and contains some splendid fishing pools.

SALMON COVE RIVER [Now Salmon River; 1N/14]

At the bottom of Salmon Cove, Conception Bay. A good river for salmon and trout, with many pools and ponds.

SEARSTOWN BROOK [Now Shearstown Brook; 1N/11]

At the bottom of Spaniard's Bay, Conception Bay. Good for grilse and sea trout. Settlement on the brook.

NORTH AND SOUTH RIVERS, CLARKE'S BEACH [1N/11]

At the bottom of Port de Grave, Conception Bay. Good for small salmon and sea trout.

GOULD'S BROOK, AVONDALE BROOK, NORTH AND SOUTH BROOK HOLYROOD AND SEAL COVE BROOK [1N/6]

All at the bottom of Conception Bay. All good sea-trout brooks with a few salmon.





