

SALMON RIVERS OF NEWFOUNDLAND

East Coast - White Bay to Green Bay

from C.H. Palmer's 1928 book of the same name



***Mobilewords* Limited**

© 2016

Publishing information

Library and Archives Canada Cataloguing in Publication

Palmer, C. H., author

Salmon rivers of Newfoundland.

Originally published in 1928 in 1 volume and re-published by Mobilewords Limited in 2005.

Contents: Volume 3. East coast--White Bay to Green Bay

ISBN 978-0-9958183-0-9 (v. 3 : PDF).

1. Atlantic salmon fishing--Newfoundland and Labrador. 2. Rivers--Newfoundland and Labrador. I. Title.

SH685.P35 2016

799.17'5609718

C2016-907316-5

ISBN: 978-0-9958183-0-9

Cover: The 1928 edition included a folded, onionskin paper, hand-drawn map of the Island; in 2005 the map was reproduced and personalized with the owner's name. The cartographer probably was a railway or government employee, and is very accurate when compared to later 20th century maps.

SALMON RIVERS OF NEWFOUNDLAND
East Coast – White Bay to Green Bay

Vol. 3 of 6

WEST BROOK, HARE BAY

ARIÈGE RIVER

NORTH EAST RIVER

NORTH WEST RIVER

CLOUD RIVER

**NORTHERN ARM & PETER'S ARM
BROOKS**

INDIAN BROOK, HALL'S BAY

WEST BROOK, HALL'S BAY

WEST BROOK

SOUTH BROOK, HALL'S BAY

TOMMY'S ARM RIVER

SOP'S ARM RIVER

19 other rivers and brooks

Introduction

Palmer's 1928 SALMON RIVERS OF NEWFOUNDLAND remains popular. Much sought after, in the late 20th century, original copies were selling for as much as \$500. Mobilewords Limited re-published Palmer in 2005, using most of the information, maps and pictures and added a gazetteer of rivers in Labrador which Palmer didn't fish.

Palmer fished each river from its mouth to its headwaters, usually by boat, and occasionally, by train. His hand-drawn maps show the pools, falls, steadies, rocks, campgrounds, and other features. Most maps are oriented with the ocean at the bottom ascending up the page as one would go *upriver*.

In this extraction, Palmer's maps are annotated with general geographic information such as tributary names, where the river rises, topographic map references, and a list of pools taken from the map. Some items from 1928, which were left in the 2005 edition, are now removed.

Pictures from the 1928 edition, colour images of salmon flies found on the Internet and relevant map sections are included for reference.

continued

Someone sold the idea to the Newfoundland Government and it was published by a partnership between the government tourism department and the Newfoundland Railway. In some ways it is another in the long history of Newfoundland writing, tracing its roots back to the *Discourses* of John Mason, Richard Whitbourne and William Vaughan some three centuries earlier, extolling the island for its many natural virtues.

The original and re-published *Salmon Rivers of Newfoundland* included the whole island in one volume. Issued as a collectible in 2005, some purchasers indicated their interest was primarily in the rivers of smaller regions. This volume, then, is one of six extracted from the complete volume, each a separate region as set out here below.

West Coast – Port aux Basques to Bay of Islands, Vol. 1

West Coast – Bay of Islands to Strait of Bell Isle, Vol. 2

East Coast – Hare Bay to Exploits Bay, Vol. 3

East Coast – Notre Dame Bay to Bonavista Bay, Vol. 4

South Coast – Cape Race to Lawn Bay, Vol. 5

South Coast – Fortune Bay to Port aux Basques, Vol. 6



WEST BROOK, HARE BAY

Location—

On East Coast at bottom of Hare Bay.

General Remarks—

For parties fishing Ariège River, this river which lies about a mile farther in the bay offers additional opportunity for fishing. The best salmon pools lie in the first 2½ miles of the river, at which distance a large lake is met. This river like Ariège River, offers a good canoe trip.

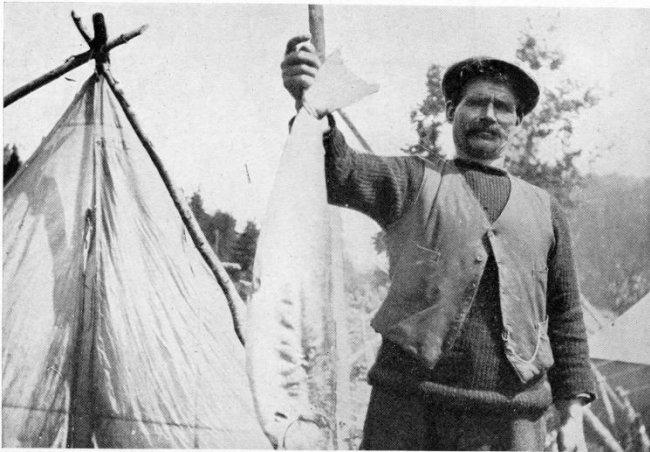
Flies, the pest of the woods, are usually gone from this area by the end of July.

Notes:

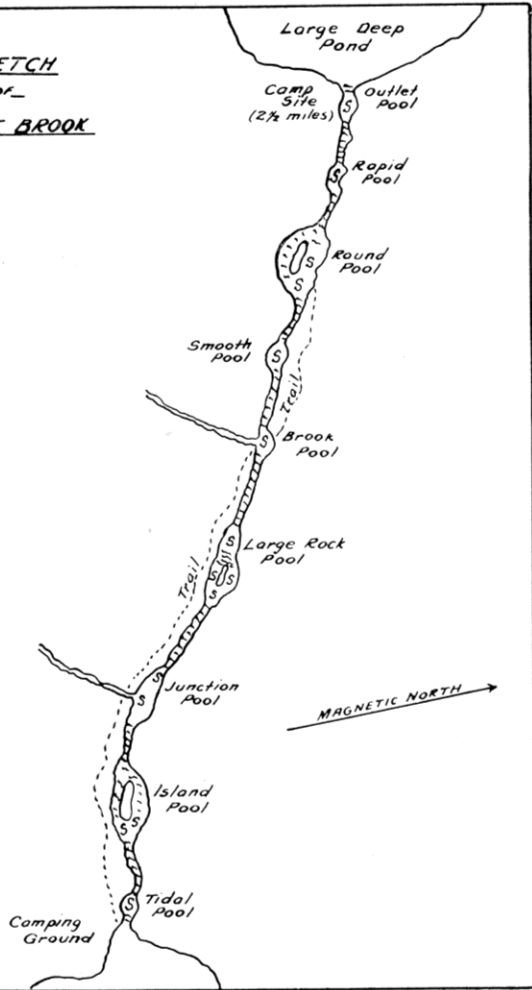
Flows into West Brook Arm (Windy Bay). 12P/1

Pools:

Tidal Pool, Island Pool, Junction Pool, Large Rock Pool, Brook Pool, Smooth Pool, Round Pool, Rapid Pool, Outlook Pool



SKETCH
of
WEST BROOK



ARIÈGE RIVER

Location—

On East Coast at bottom of Hare Bay.

General Remarks—

This river has many fine salmon pools and runs along its course from the sea to its headwaters about 40 miles inland. There are also a number of small ponds or steadies. In anything but a very dry season offers exceptional opportunity for a canoe and fishing trip. From its headwaters a portage of 3 miles brings one to the headwaters of River Castors, and it in turn is a fine river for canoeing and fishing, and empties into Bay St. John on the West Coast of the Island. There are numerous splendid camping sites along its course, and fish ranging from grilse of 4 to 6 lbs. to salmon of 25 lbs. in weight can be caught in abundance.

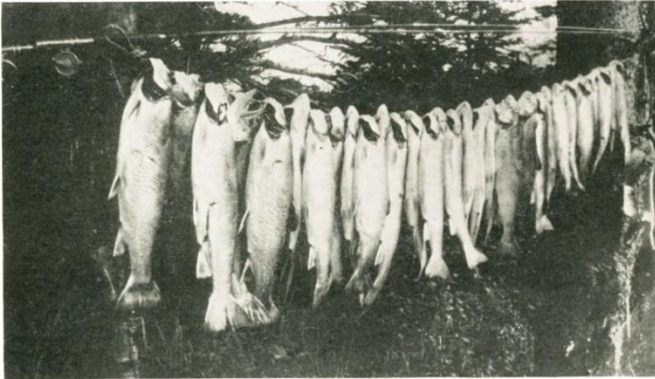
Notes:

Now Salmon River.

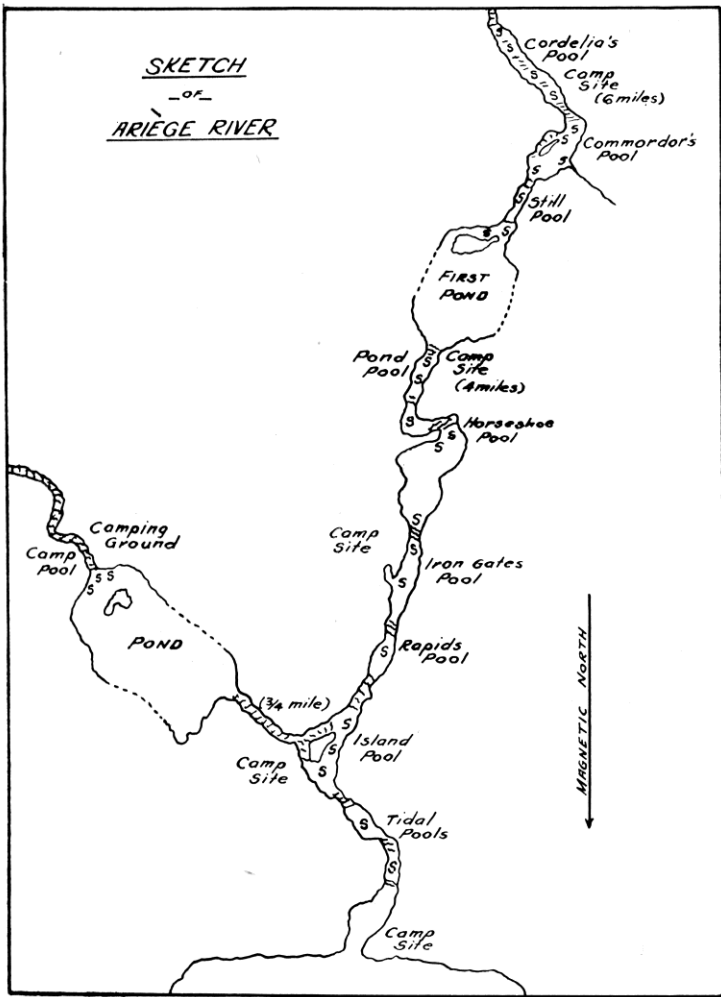
12P/1

Pools:

Tidal Pools, Island Pool, Camp Pool, Rapids Pool, Iron Gates Pool, Horseshoe Pool, Pond Pool, Still Pool, Commordor's Pool, Cordelia's Pool



SKETCH
- of -
ARIEGE RIVER



NORTH EAST RIVER

Location–

On East Coast, river flows into the North East Arm of Canada Bay.

Accessibility–

Englee, is distant approximately 15 miles from the river’s mouth. Motor boats can be hired for the run to the river.

General Remarks–

This river is practically one pool after another, as the country rocks are of sedimentary formation, which make numerous ledges and corresponding pools, in which salmon and trout lie. The river bed is easily walked and the pools readily fished.

Tributaries:

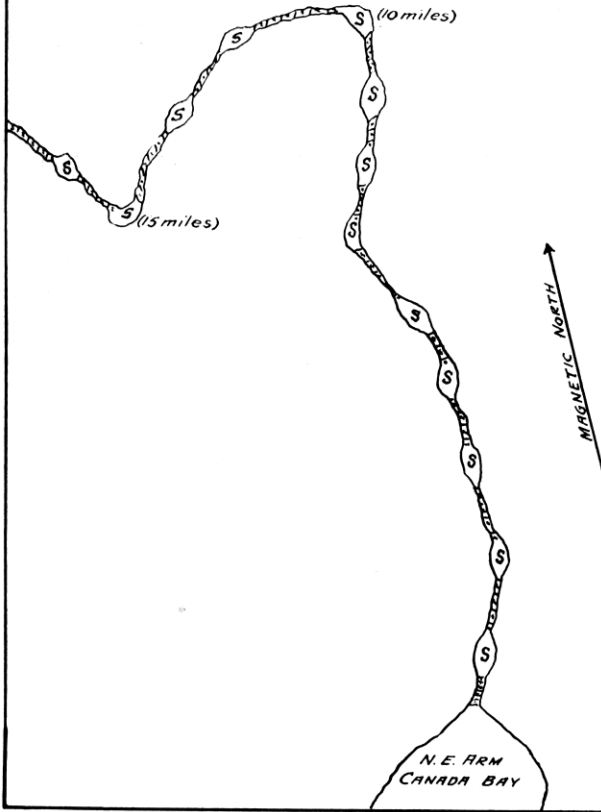
Pennys Brook	12/1/16
Rushy Brook	12/1/16

Pools:

13 unnamed pools



SKETCH
-of-
NORTH EAST RIVER



NORTH WEST RIVER

Location—

On East Coast, river flows into the bottom of Canada Bay.

General Remarks—

This river, like others in the Bay, offers good salmon and sea trout fishing.

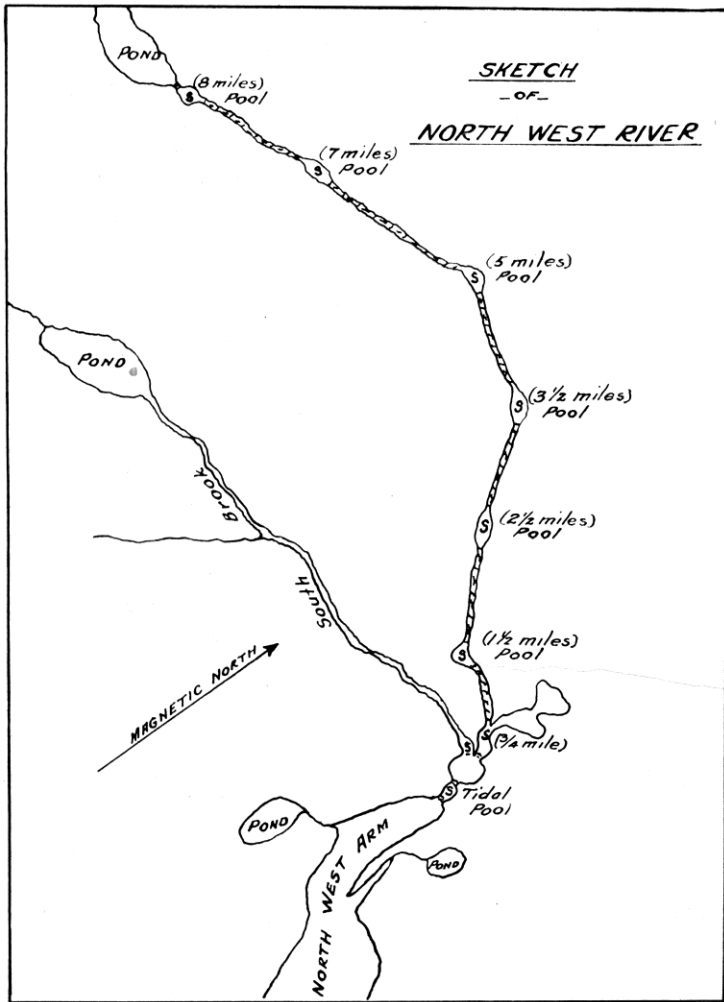
Notes:

Flows into Long Arm of Northwest Arm
of Castor Cove, Canada Bay. 12/16

Pools:

Tidal Pool, 7 unnamed pools





CLOUD RIVER

Location—

On East Coast, river flows into the bottom of Canada Bay.

General Remarks—

Flies, the pest of the woods, are usually gone from this area by August. Excellent fishing pools are located on this river and good camping sites are easily found. Salmon ranging from grilse of 5 or 6 lbs. to fish of 20 lbs. in weight have been taken from this river. Good sea-trout fishing can be had at the mouth of the river at Salt Water Pond.

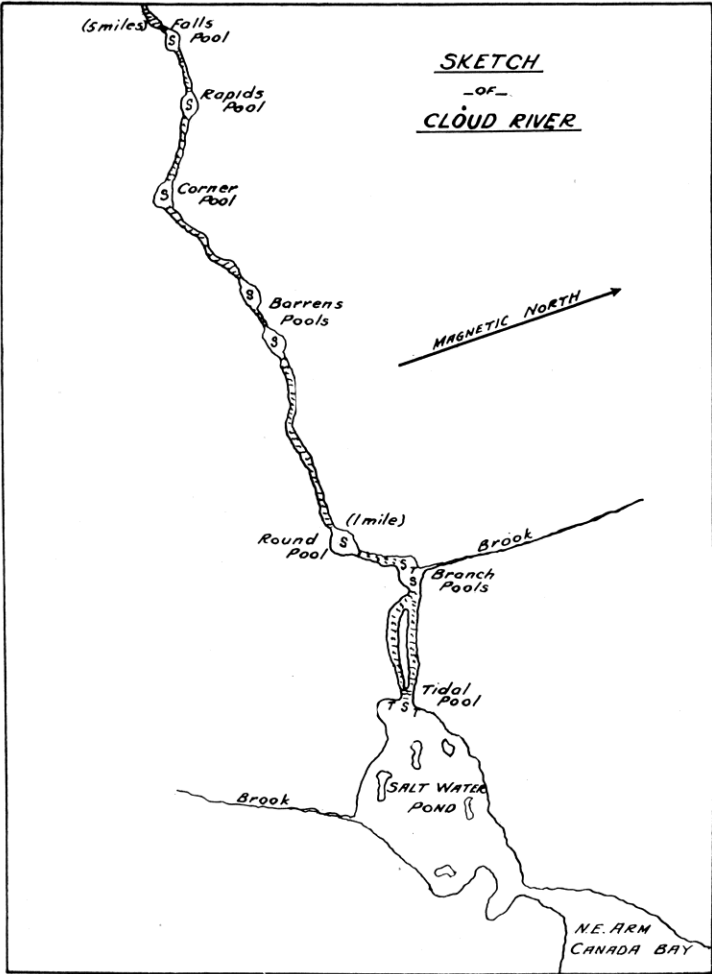
Notes:

Saltwater Pond is confluent with Northwest Arm of Castor Cove Canada Bay.
12/16

Pools:

Tidal Pool, Branch Pools, Round Pool, Barrens Pools, Corner Pool, Rapids Pool, Falls Pool





NORTHERN ARM & PETER'S ARM BROOKS

Location–

These two rivers flow into Exploits Bay, Notre Dame Bay, on the East Coast.

Accessibility–

Both rivers are accessible from Botwood, Northern Arm being 2 miles and Peter's Arm 2¼ miles. Motor boats can readily be hired for the run to these two rivers.

General Remarks–

These two rivers carry a nice run of salmon and sea trout and there are numerous pools on both. The local fishermen from Botwood and Norris Arm fish these rivers. For parties fishing the Exploits River, these two rivers, in close proximity, offer additional opportunities for good sport. A road connects Botwood with the rivers, so that these rivers can be fished daily from Botwood.

Notes:

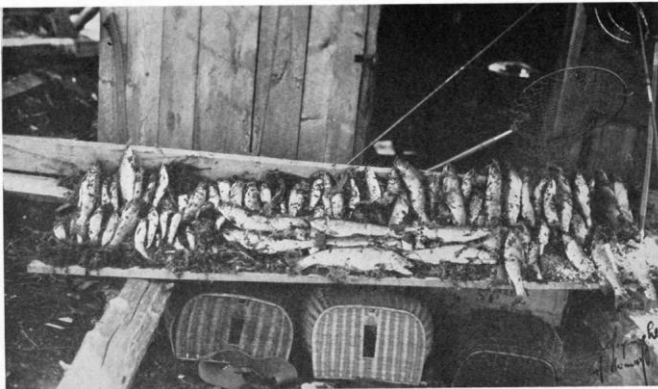
These streams flow into Exploits Bay
on either side of Botwood. 2E/3

Northern Arm Brook Pools:

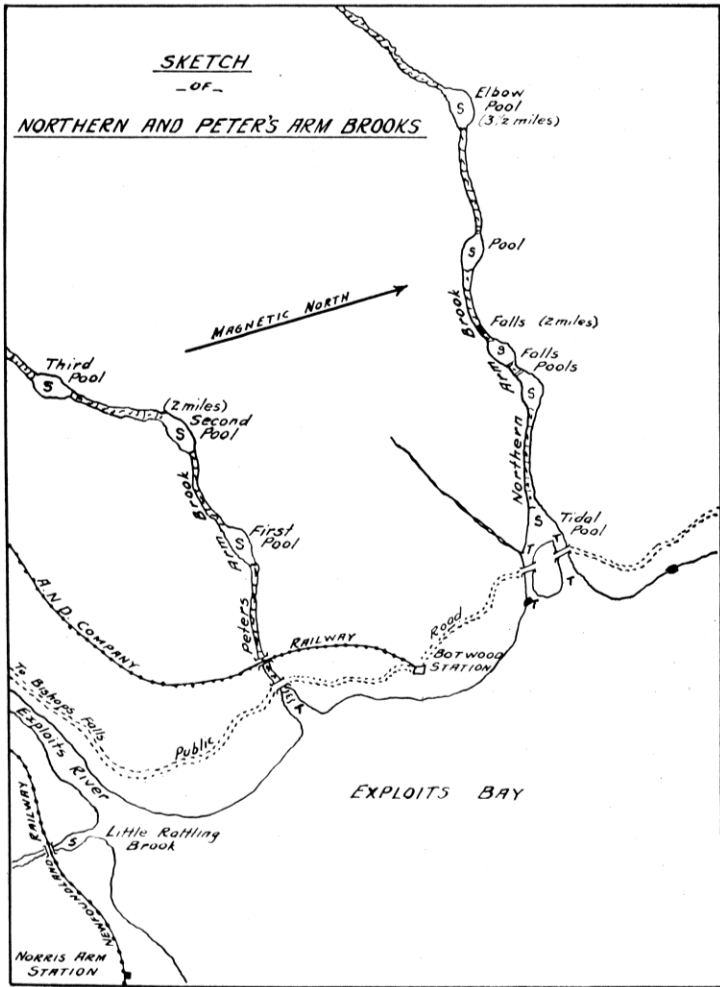
Tidal Pool, Falls Pools, Unnamed Pool, Elbow Pool

Peter's Arm Brook Pools:

First Pool, Second Pool, Third Pool



SKETCH
-OF-
NORTHERN AND PETER'S ARM BROOKS



INDIAN BROOK, HALL'S BAY

Location—

In Hall's Bay, Notre Dame Bay, on East Coast.

General Remarks—

This stream has some excellent fishing pools on the main river and its tributary coming in from Davie's Pond on the north. The best fishing is at the falls where 3 or 4 good pools are located. The road from Springdale runs directly to the falls; this road crosses the branch from Davie's Pond and a branch road to Little Bay leads to Davie's Pond, and the river to the falls can be fished daily from Springdale.

For anyone desiring a good canoe and fishing trip, this river offers exceptional opportunities. From its headwaters a portage of 3 to 4 miles brings one to the headwaters of Birchy Pond River, which flows into Sandy Lake, which empties into Grand Lake. Camping sites are numerous and splendid salmon and trout fishing can be had over its entire length. Salmon of up to 20 lbs. in weight can readily be caught, also trout of 4 to 6 lbs.

Tributaries:

Hermans Brook	12H/7
North Brook	12H/7
Oxfords Brook	12H/7
Black Brook	12H/8
White Horn Brook	12H/8
Davis Brook	12H/9

Notes:

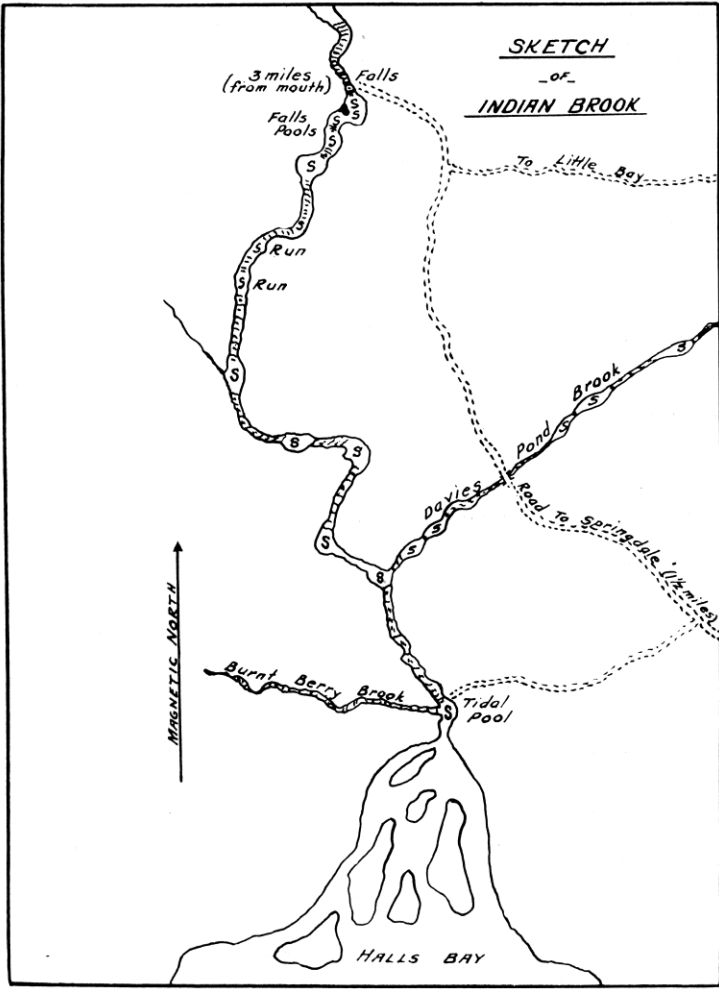
Davies Brook now Davis Brook.

Rises in Lake Buck and Upper

Indian Pond. 12H/7

Pools:

Tidal Pool, Falls Pools, 12 unnamed poo



SKETCH

-of-

INDIAN BROOK

3 miles
(from mouth)

Falls

Falls
Pools

To Little Bay

Run

Run

Brook

Pond

Davies

Road to Springdale (1 1/2 miles)

MAGNETIC NORTH ↑

Burnt Berry Brook

Tidal Pool

HALLS BAY

WEST BROOK, HALL'S BAY

Location—

At the bottom of Hall's Bay in Green Bay, on the East Coast.

Accessibility—

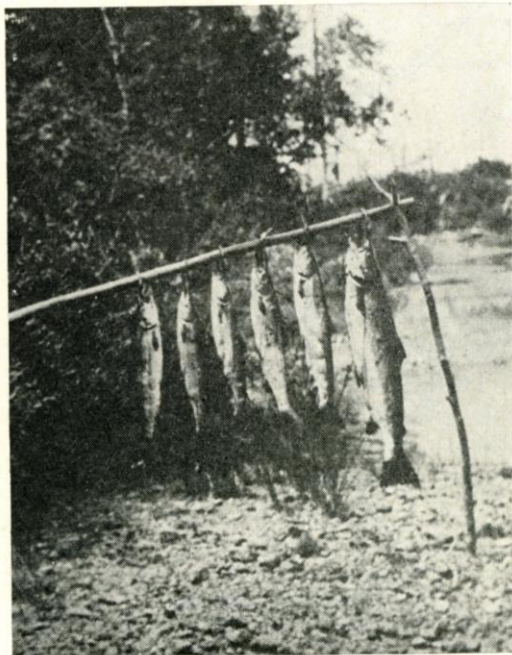
The river is readily accessible by motor boat from Springdale, approximately 5 miles north.

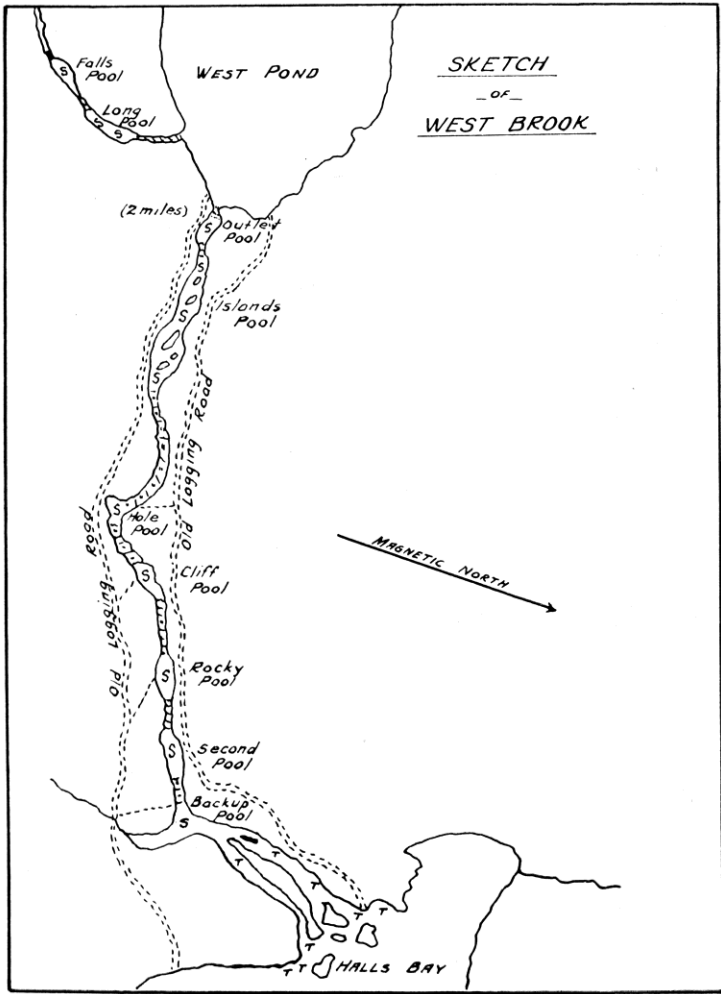
General Remarks—

From the sea to West Pond, a distance of 2 miles, are located many good salmon pools. These can all readily be reached by trails and logging roads running alongside on the river's banks, canoes not being necessary. Good sea-trout fishing in July can be had at the river's mouth. Salmon up to 20 lbs. in weight frequent the river.

Pools:

Backup Pool, Second Pool, Rocky Pool, Cliff Pool, Hole Pool, Islands Pool, Outside Pool, Long Pool, Falls Pool





SOUTH BROOK, HALL'S BAY

Location—

Flows into the bottom of Hall's Bay in Green Bay, on the East Coast.

General Remarks—

The Badger-Hall's Bay road runs alongside this river from Gull Pond, 8 miles inland, to the sea, and from it the various pools can readily be reached, no boats or canoes being necessary. A splendid run of salmon frequent this river. Camping sites are numerous.

Tributaries:

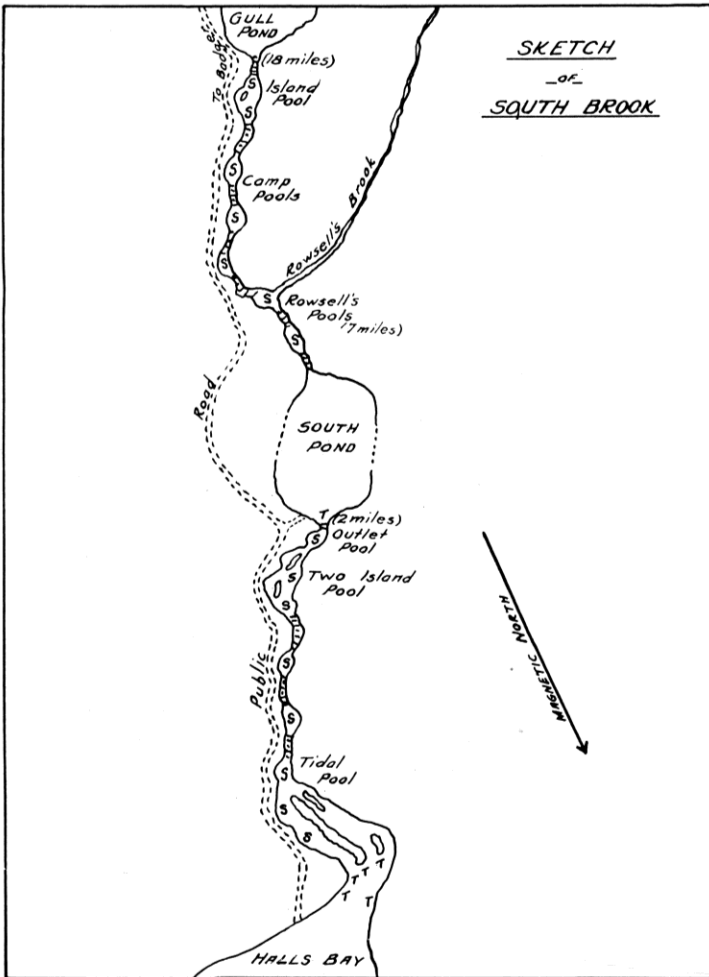
Gull Brook	12H/8
Little Joe Brook	12H/1
Sandy Brook	12H/1
Glodes Brook	12H/1
Kings Brook	12H/1

Pools:

Tidal Pool, Two Island Pool, Outlet Pool, Rowsell's Pool, Camp Pools, Island Poo



SKETCH
-of-
SOUTH BROOK



TOMMY'S ARM RIVER

Location—

In the bottom of Tommy's Arm, Green Bay, on the East Coast.

General Remarks—

Tommy's Arm River flows out of Crescent Lake. This river is only 1½ miles long, but contains some excellent pools along its course. The South West Brook flowing into Crescent Lake also offers good fishing. Both rivers are easily reached from Rabbit's Arm, distant 6 miles from Pilley's Island. Good sea-trout fishing can also be obtained. Salmon range in weight from 5 to 15 lbs.

Tributaries:

Gummy Brook	2E/5
Black Brook	2E/5
Five Island Pond Brook	2E/5
South Brook	2E/5
Loon Brook	12H/8
Moose Brook	12H/8

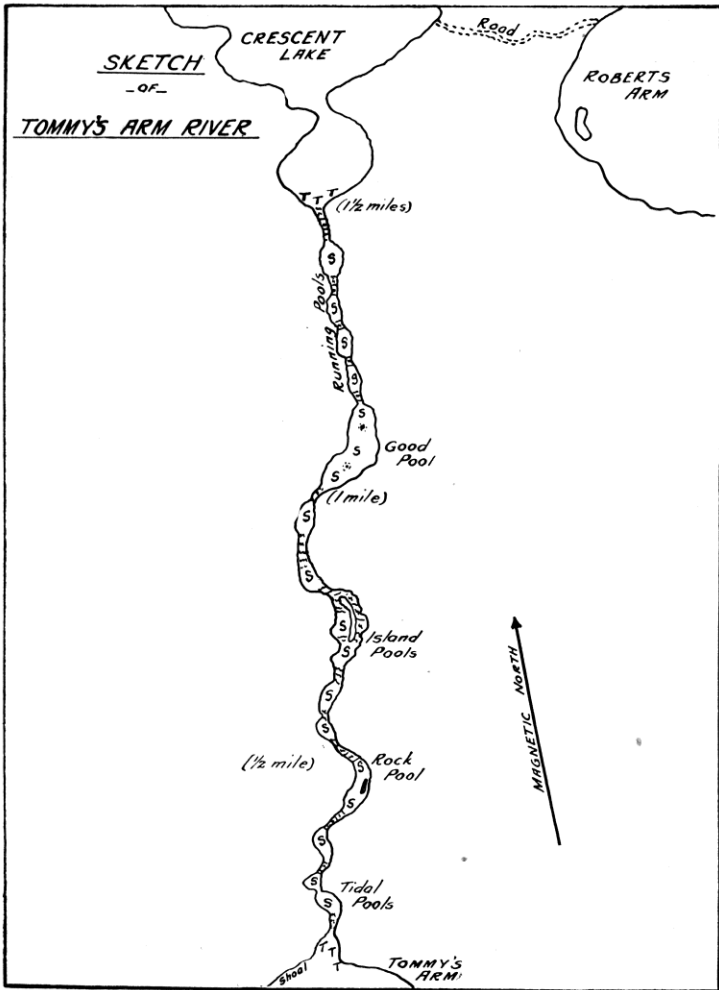
Notes:

Rises in Rocky Pond.	12H/8
----------------------	-------

Pools:

Tidal Pools, Rock Pool, Island Pool, Good Pool, Running Pools





SOP'S ARM RIVER

Location—

On East Coast, river flows into Sop's Arm of White Bay.

General Remarks—

This is a wide shallow river, with the pools not very close together, but unusually well filled with fish owing to the shallow nature of the river between. Good sea-trout fishing can be had at the river's mouth and on the small brook that flows in on the south.

Tributaries:

Doucens Brook	12H/15
Little Brook	12H/15
Otter Trap Brook	12H/15

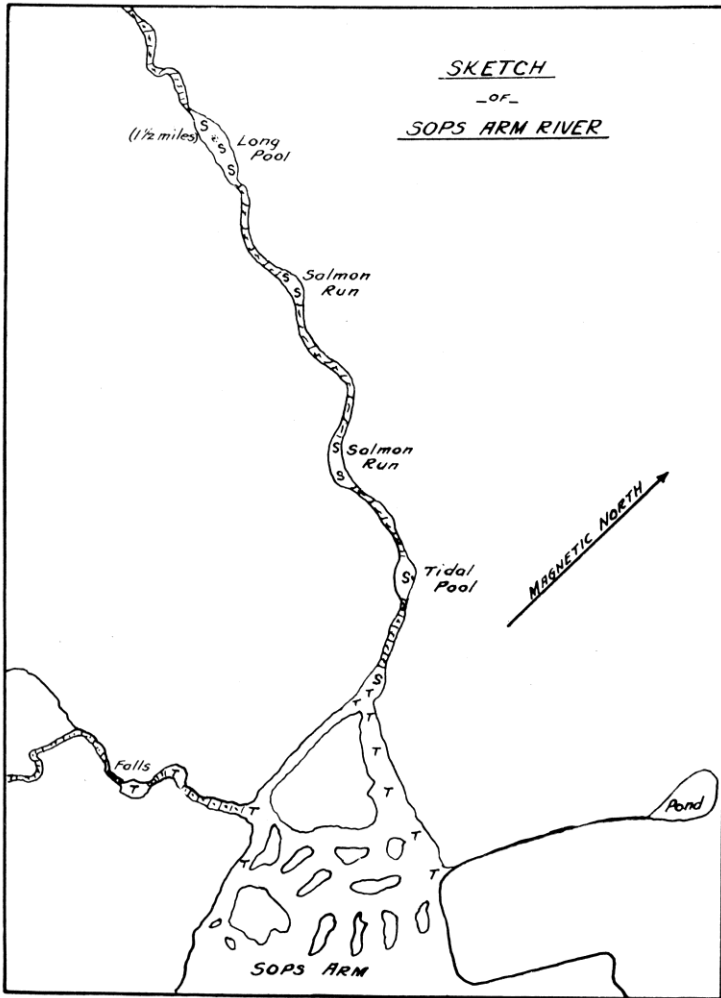
Notes:

Now Main River.
Rises in Long Range Mountains. 12H/14

Pools:

Tidal Pool, Long Pool





19 other rivers and brooks

SOUFFLET'S ARM BROOK [Now Soufflets River, 12I/8]

In the bottom of Soufflet's Arm, Great Harbour Deep. Good for sea trout and small salmon.

LITTLE HARBOUR DEEP RIVER [12I/2]

At the bottom of Little Harbour Deep, White Bay. A good rive for grilse and sea trout.

WILLIAMS PORT [12I/9]

At the bottom of Trouser Cove, White Bay. A nice rive for salmon and sea trout. Shallow at mouth, but some fine pools inland, good in June and July.

GREAT CAT ARM RIVER [Now Cat Arm River; 12I/2]

At the bottom of Great Cat Arm, White Bay. A nice river for small salmon and sea trout.

HAMPDEN RIVER [12H/7]

At Hampden, in the bottom of White Bay. Good for sea trout.

BAIE VERTE BROOKS [Now Baie Verte River and South West Brook; 12H/16]

In Baie Verte. Two brooks good for small salmon and sea trout.

SOUTH BROOK [12H/9]

On the east side near King's Point, bottom of South West Arm, Green Bay. Good for sea trout; also a few salmon.

HARRY'S ARM; MIDDLE ARM; SOUTHERN ARM BROOKS [12E/12]

All Arms of Green Bay. The brooks flow into the bottom of the Arms. Good for sea trout and few small salmon

BADGER BAY RIVER [12E/5]

At bottom of Badger Bay, Notre Dame Bay. A good river for medium-sized salmon and sea trout.

SEAL BAY RIVER [Now Seal Bay Brook; 12E/5]

At the bottom of Seal Bay, Notre Dame Bay. Good for medium-sized salmon and sea trout.

NORTH WEST, WEST AND SOUTH WEST RIVERS [Now West Arm Brook and New Bay River; 2E/6]

At the bottom of the three arms of New Bay, Notre Dame Bay. They all offer good fishing for salmon or medium size and sea trout.

CHARLES BROOK [2E/6]

At the entrance to Exploits Bay, Notre Dame Bay. Good for sea trout.

LEWISPORT AND SCISSORS COVE BROOKS [Now Southwest Brook; Scissors Cove Brook no longer identified; 2E/6]

In the bottom of Lewisport Bay, Notre Dame Bay. Good for grilse and sea trout.



