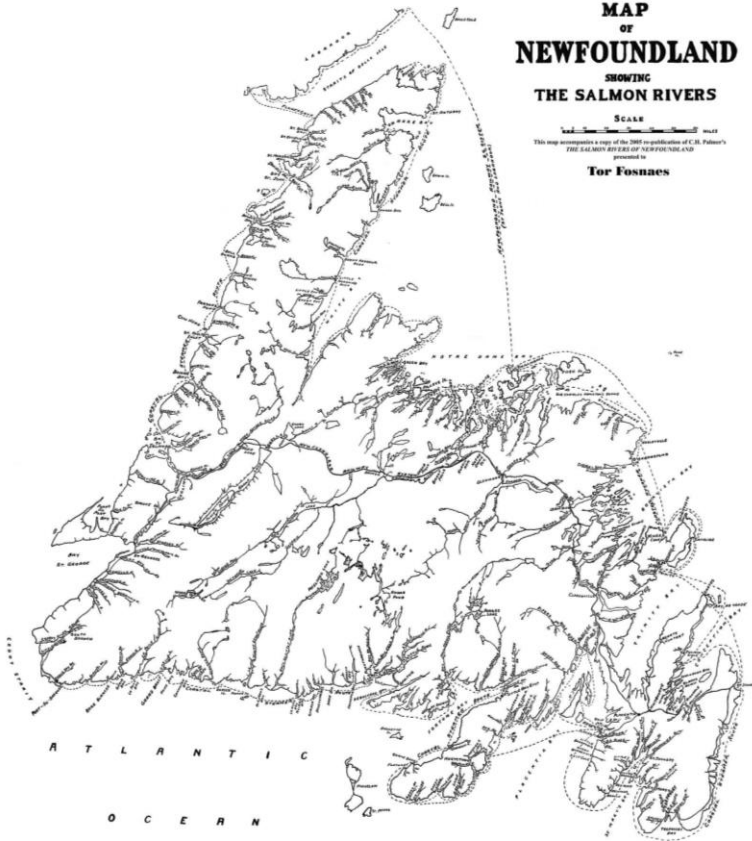


# SALMON RIVERS OF NEWFOUNDLAND

## West Coast – Port aux Basques to Bay of Islands

from C.H. Palmer's 1928 book of the same name



*Mobilewords* Limited

© 2016

**Publishing information**

**Library and Archives Canada Cataloguing in Publication**

**Palmer, C. H., author**

**Salmon rivers of Newfoundland.**

**Originally published in 1928 in 1 volume and re-published by Mobilewords Limited in 2005.**

**Contents: Volume 1. West coast--Port aux Basques to Bay of Islands**

**ISBN 978-0-9867415-8-6 (v. 1 : PDF).**

**1. Atlantic salmon fishing--Newfoundland and Labrador. 2. Rivers--Newfoundland and Labrador. I. Title.**

**SH685.P35 2016**

**799.17'5609718**

**C2016-907316-5**

**ISBN: 978-0-9867415-8-6**

Cover: The 1928 edition included a folded, onionskin paper, hand-drawn map of the Island; in 2005 the map was reproduced and personalized with the owner's name. The cartographer probably was a railway or government employee, and is very accurate when compared to later 20<sup>th</sup> century maps

**SALMON RIVERS – WEST COAST**  
**Port aux Basques to Bay of Islands**

**Vol. 1 of 6**

**Introduction**

**GRAND BAY RIVER**  
**LITTLE CODROY RIVER**  
**GREAT CODROY RIVER**  
**SOUTH BRANCH CODROY RIVER**  
**NORTH BRANCH CODROY RIVER**  
**HIGHLANDS RIVER**  
**CRABBS RIVER**  
**MIDDLE BARACHOIS BROOK**  
**ROBINSON'S RIVER**  
**FISHELL'S RIVER**  
**FLAT BAY BROOK**  
**LITTLE BARACHOIS BROOK**  
**ST. GEORGE'S RIVER**  
**BOTTOM BROOK**  
**HARRY'S RIVER**  
**SERPENTINE RIVER**  
**FOX ISLAND RIVER**

Palmer's 1928 SALMON RIVERS OF NEWFOUNDLAND remains popular. Much sought after, in the late 20<sup>th</sup> century, original copies were selling for as much as \$500. Mobilewords Limited re-published Palmer in 2005, using most of the information, maps and pictures and added a gazetteer of rivers in Labrador which Palmer didn't fish.

Palmer fished each river from its mouth to its headwaters, usually by boat, and occasionally, by train. His hand-drawn maps show the pools, falls, steadies, rocks, campgrounds, and other features. Most maps are oriented with the ocean at the bottom ascending up the page as one would go *upriver*.

In this extraction, Palmer's maps are annotated with general geographic information such as tributary names, where the river rises, topographic map references, and a list of pools taken from the map. Some items from 1928, which were left in the 2005 edition, are now removed.

**1 other rivers and brooks**

Pictures from the 1928 edition, colour images of salmon flies found on the Internet and relevant map sections are included for reference.

continued

Someone sold the idea to the Newfoundland Government and it was published by a partnership between the government tourism department and the Newfoundland Railway. In some ways it is another in the long history of Newfoundland writing, tracing its roots back to the *Discourses* of John Mason, Richard Whitbourne and William Vaughan some three centuries earlier, extolling the island for its many natural virtues.

The original and re-published *Salmon Rivers of Newfoundland* included the whole island in one volume. Issued as a collectible in 2005, some purchasers indicated their interest was primarily in the rivers of smaller regions. This volume, then, is one of six extracted from the complete volume, each a separate region as set out here below.

### **West Coast – Port aux Basques to Bay of Islands, Vol. 1**

West Coast – Bay of Islands to Strait of Bell Isle, Vol. 2

East Coast – Hare Bay to Exploits Bay, Vol. 3

East Coast – Notre Dame Bay to Bonavista Bay, Vol. 4

South Coast – Cape Race to Lawn Bay, Vol. 5

South Coast – Fortune Bay to Port aux Basques, Vol. 6



## GRAND BAY RIVER

### ***Location—***

Port aux Basques, western terminal of the Newfoundland Railway and Newfoundland port for the S.S. "Caribou," connecting steamer with Canada (North Sydney) across the Gulf of St. Lawrence.

### ***Season—***

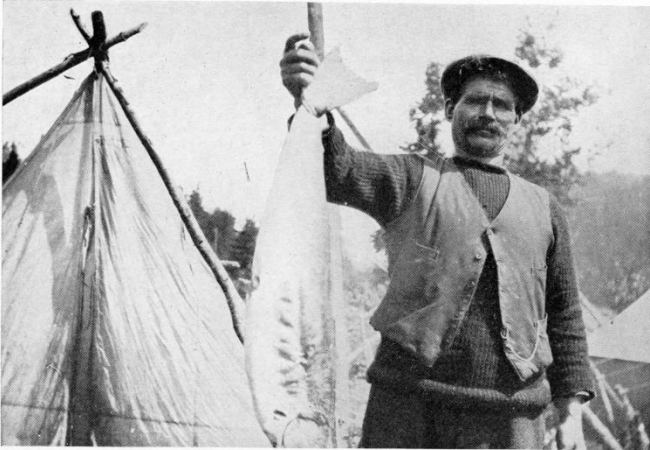
June and July are the best months.

### ***General Remarks—***

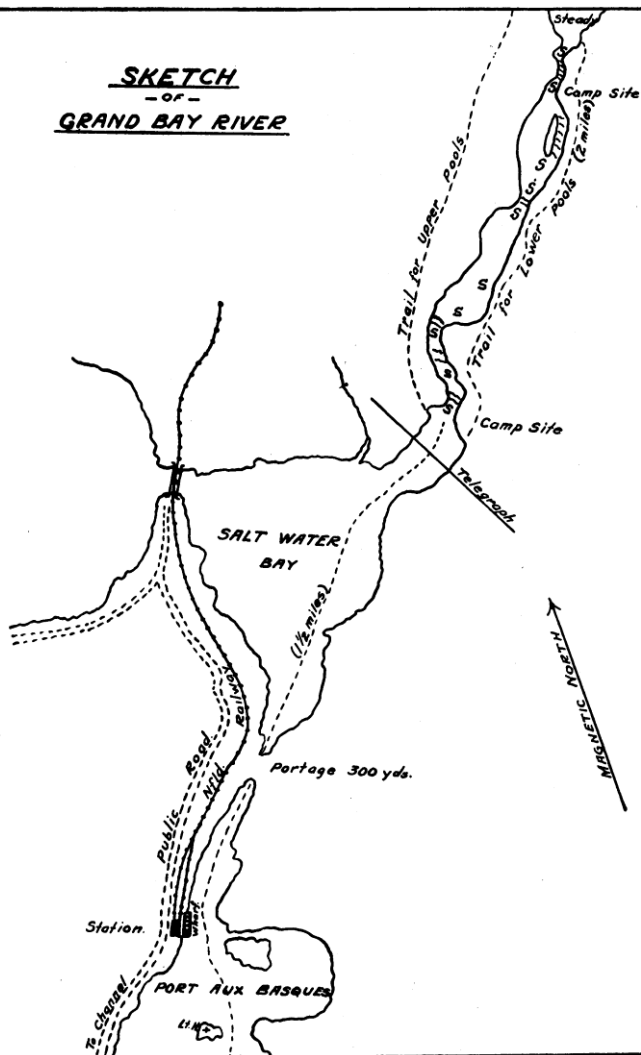
The river flows into a deep inland bay of the sea, which is crossed by the railway. Sea trout are also caught here.

### ***Pools:***

10 unnamed pools.



SKETCH  
-or-  
GRAND BAY RIVER



## LITTLE CODROY RIVER

### ***Location—***

On West Coast, 20 miles from Port aux Basques.

### ***Season—***

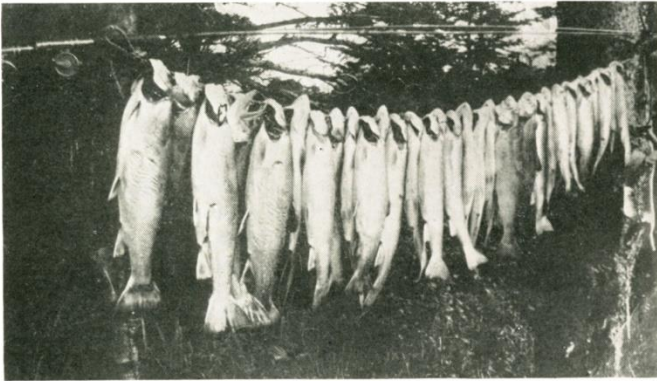
Fishing is good on this river throughout the season from June to September.

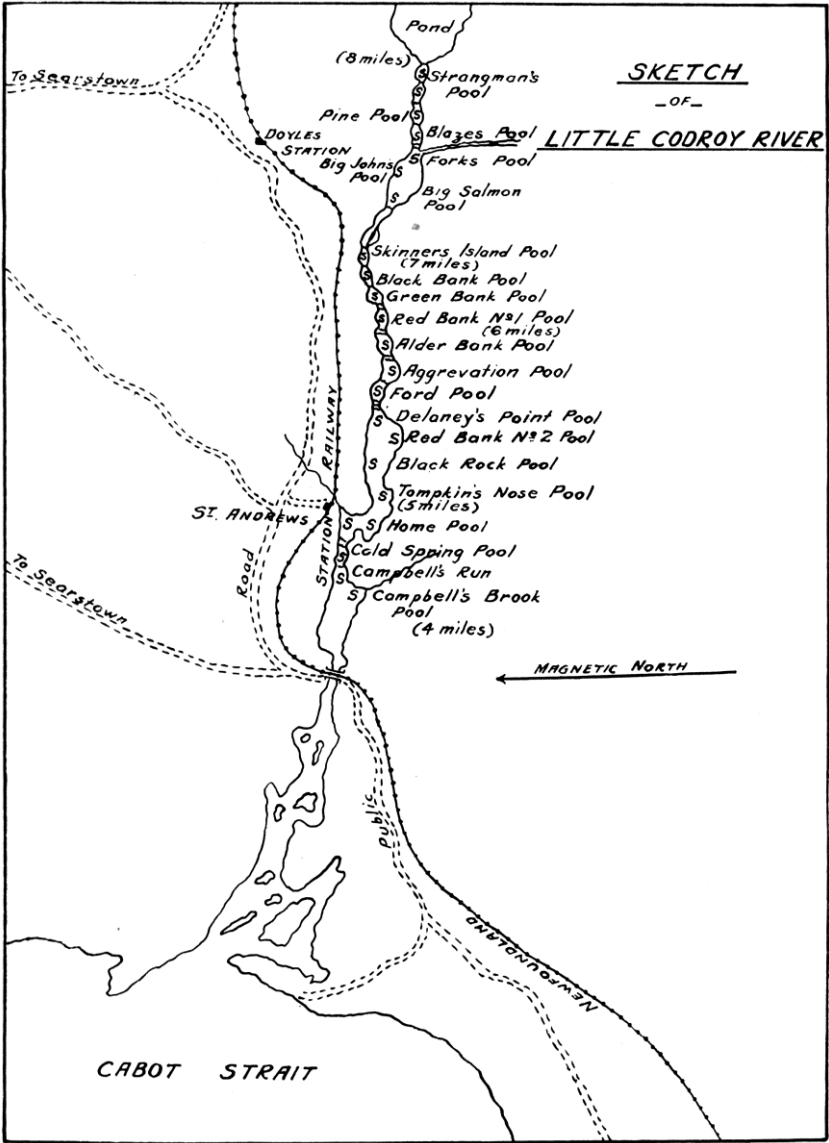
### ***General Remarks—***

This is one of the larger rivers and is well known for its sporting activities. Many local and foreign sportsmen return to Tompkins Hotel year after year to enjoy the fishing. Salmon ranging in weight from 10 to 40 lbs. have been caught. The reputation of Mr. Tompkins—"that no one is allowed to leave without having secured one or many salmon, and there is no place in the world where the chances for salmon are so good"—is well lived up to.

### ***Pools:***

Campbell's Pool, Cold Spring Pool, Home Pool, Tompkins Nose Pool, Black Rock Pool, Red Bank No. 2 Pool, Delaney's Point Pool, Ford Pool, Aggregation Pool, Alder Bank Pool, Red Bank No. 1 Pool, Green Bank Pool, Black Bank Pool, Skinners Island Pool, Big Salmon Pool, Big John's Pool, Forks Pool, Blazes Pool, Pine Pool, Strongman's Pool







## GREAT CODROY RIVER

### **Location—**

On West Coast, 25 miles from Port aux Basques.

### **Season—**

Fishing begins on this river on the first of June and continues throughout the season.

### **General Remarks—**

This is one of the larger rivers and has numerous large and splendid fishing pools. Many anglers return to Doyle's year after year for the splendid fishing obtained. During 1924, in less than a month, a sports-man caught 116 salmon and 14 grilse, a total weight of 1228 lbs. Salmon up to 40 lbs. in weight have been caught. Fishing from the Tidal Pool up to Overfall Pool can best be done from Doyle's Hotel and Camps, and from the Forks Pool down to Overfall Pool from Tompkins Bungalow at South Branch and Mr. Tompkins' Camps on the river.

### **Tributaries:**

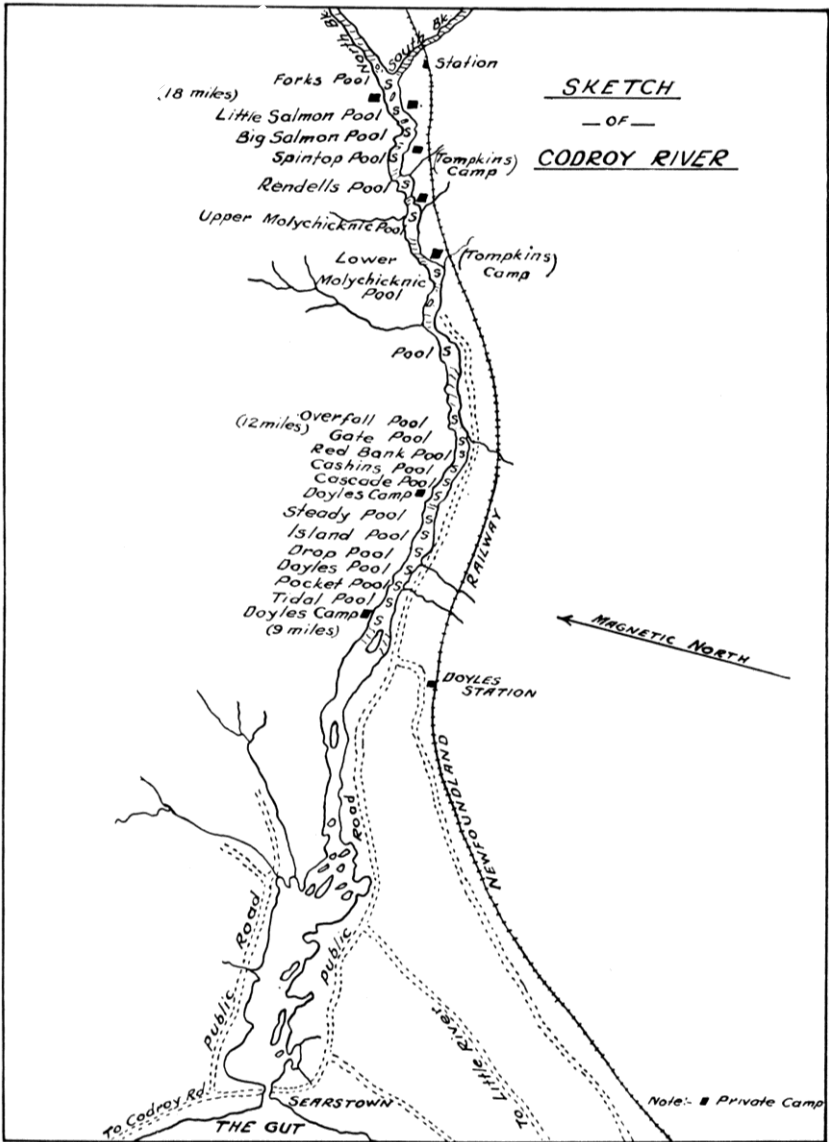
<i>Brooms Brook</i>	11O/14
Grand Daddys Brook	11O/14
Limestone Brook	11O/14
<i>Mollichignick Brook</i>	11O/14
Muddy Hole Brook	11O/14
<i>North Branch</i>	12B/2
Overfall Brook	11O/14
<i>South Branch</i>	11O/14
Stephens Brook	11O/14

### **Notes:**

Now called Grand Codroy; the community at its mouth is Great Codroy

### **Pools:**

Tidal Pool, Pocket Pool, Doyle's Pool, Drop Pool, Island Pool, Steady Pool, Cascade Pool, Cashin's Pool, Red Bank Pool, Gate Pool, Overfall Pool, unnamed pool, Lower Molychicknic Pool, Rendell's Pool, Spintop Pool, Big Salmon Pool, Little Salmon Pool, Forks



## SOUTH BRANCH CODROY RIVER

### **Location—**

On West Coast, 35 miles from Port aux Basques.

### **Accessibility—**

The Newfoundland Railway the South Branch, at South Branch Station, about one-half mile above its junction with the North Branch.

### **Season—**

From 15th June till close of season.

### **General Remarks—**

Like the main Codroy River the Branch contains many fine pools with a splendid run of fish. Camping sites are numerous. Many sportsmen, from St. John's and other places, fish this river year after year. The run of salmon is large, ranging in weight from 10 to 35 lbs.

### **Tributaries:**

Johns Brook	110/14
Muises Brook	110/14

### **Notes:**

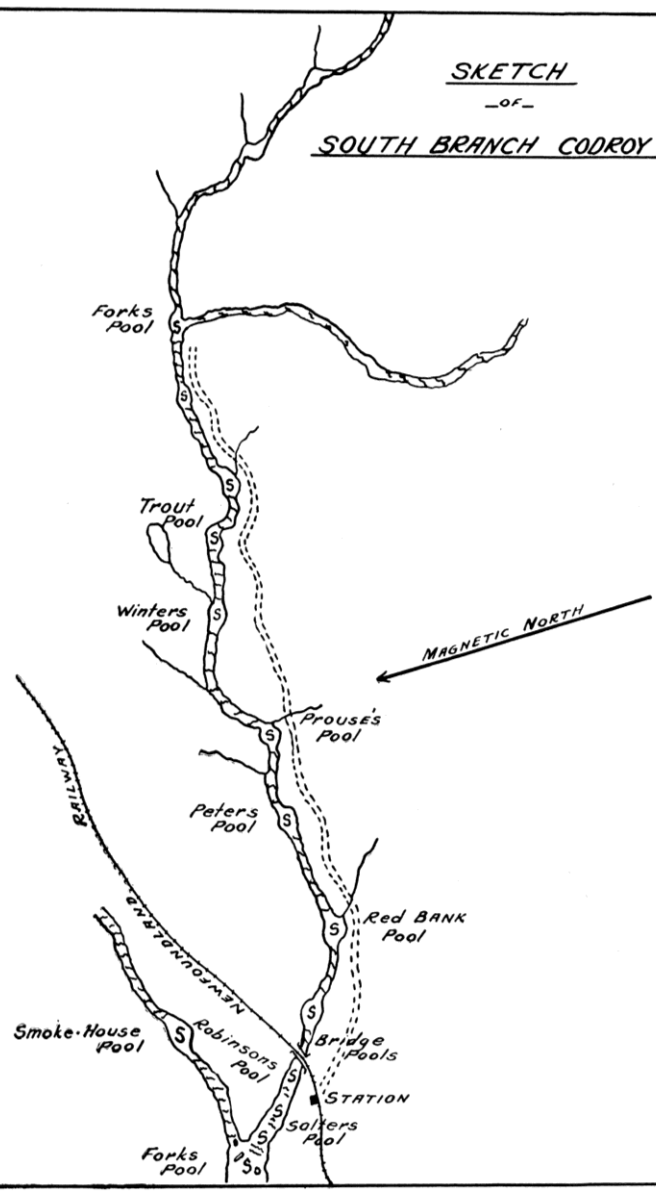
Rises in vicinity of Doughball Pond	110/15
-------------------------------------	--------

### **Pools:**

Forks Pool, Salters Pool, Bridge Pool Red Bank Pool, Peters Pool, Prouse's Pool, Winter's Pool, Trout Pool, Forks Pool



SKETCH  
-OF-  
SOUTH BRANCH CODROY RIVER



## NORTH BRANCH CODROY RIVER

### ***Location—***

On West Coast, 35 miles from Port aux Basques.

### ***Accessibility—***

From South Branch, about one-half mile above its junction with North Branch.

### ***General Remarks—***

This Branch, like the South Branch and Main River, contains numerous salmon pools.

### **Tributaries:**

Crooked Brook	12B/2
Limestone Brook	110/14
Scythestone Brook	110/14

### **Notes:**

Rises in the vicinity of Kangaroo Pond      110/15

Forks Pool, (Bridge Pools, Red Bank Pool on South Branch near forks), Smoke House Pool, Brook Pool, 5 Mile Pool, 7 Mile Pool, 6 Birches Pool, Forks Pool, Siding Pool



STATION

Codroy Pond

SKETCH

- OF -

NORTH BRANCH CODROY RIVER

RAILWAY

Siding Pool

Forks Pool

6 Birches Pool

7 mile Pool

5 mile Pool

Brook Pool

NEWFOUNDLAND

MAGNETIC NORTH

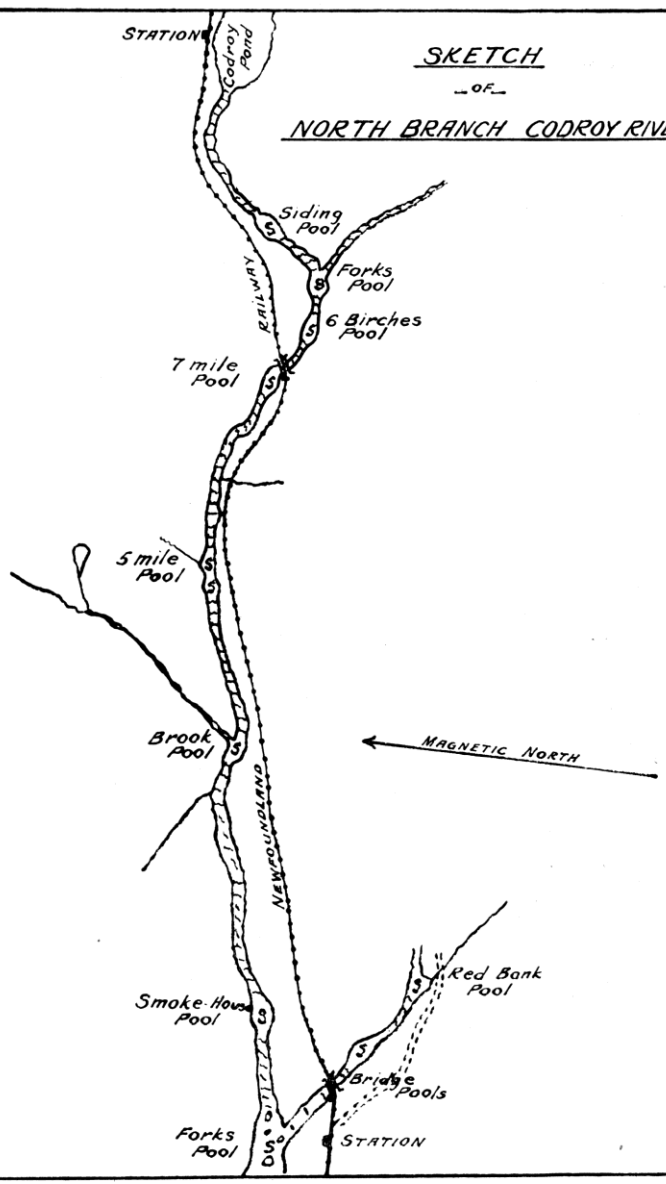
Smoke House Pool

Red Bank Pool

Bridge Pools

Forks Pool

STATION



## HIGHLANDS RIVER

### ***Location—***

On West Coast, approximately 55 miles from Port aux Basques.

### ***Accessibility—***

From Crabbs Station a road connects with the river.

### ***General Remarks—***

This river is readily reached by road from Crabbs Station. This river is also noted for its trout fishing. In the latter part of the season it is famous for its run of large fish.

The following by a sportsman who has often fished this river—"River Brook near by, is a great one late for big fish. August and September is better still. Why these large fish go there is a mystery of fish, but I have seen the pools full and not a small one in the lot."

### **Notes:**

Crabbs Station is not community of now Crabbes Brook

### **Tributaries:**

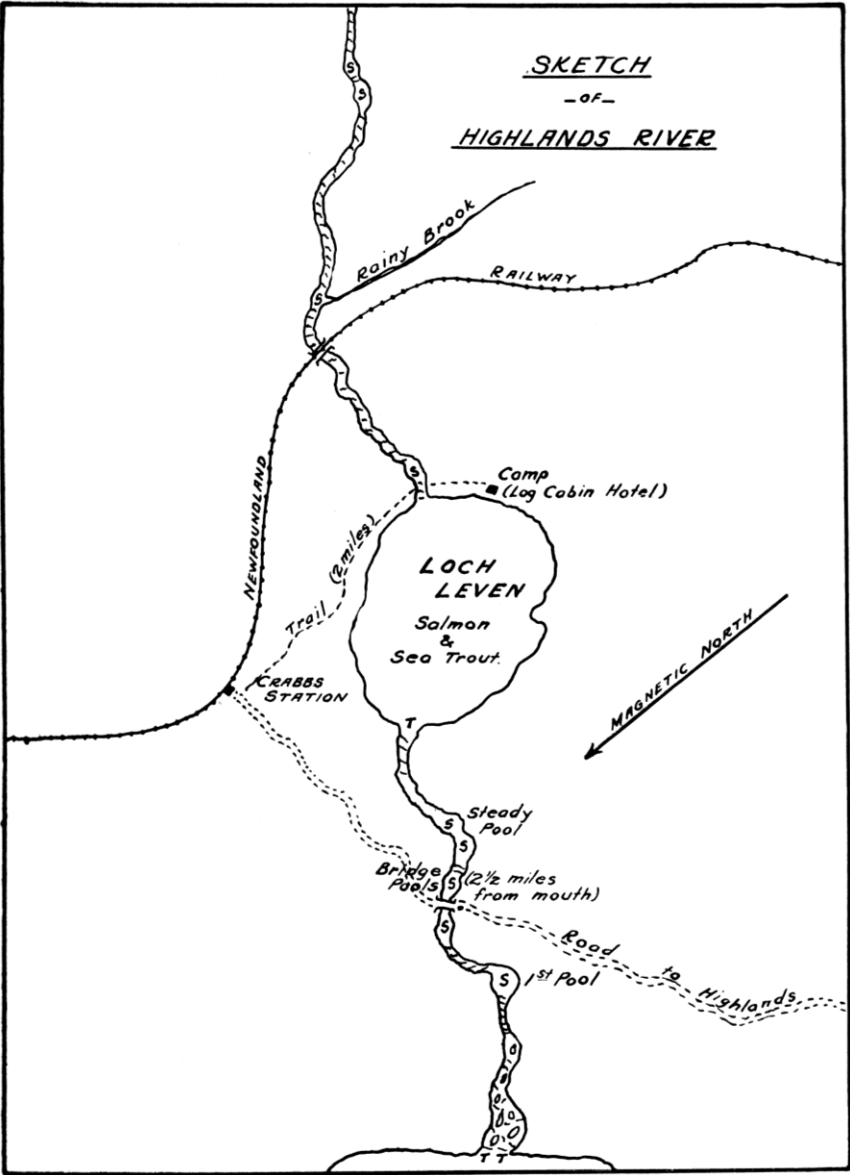
Bald Mountain Brook	12B/2
Rainy Brook East	12B/2
Rainy Brook	12B/2

### **Pools:**

1st Pool, Bridge Pools, Steady Pool, Loch Leven



SKETCH  
-OF-  
HIGHLANDS RIVER





## CRABBS RIVER

### ***Location—***

On West Coast, approximately 60 miles from Port aux Basques.

### ***Accessibility—***

Crabbs [station, now Crabbes Brook, community,] is alongside the river and gives ready access to it.

### ***General Remarks—***

This river is studded with many islands, many of which are under cultivation principally for hay. Pools are of ready access and the river being wide the angler can fish without thought as to what is behind him to catch up his flies. Beautiful camping sites, on the many islands and banks of the river, are numerous. The sand and gravel beaches of the river make excellent walking except at very high water. Good trout fishing can be had at the mouth of the river and also on Little Crabbs Brook.

### **Tributaries:**

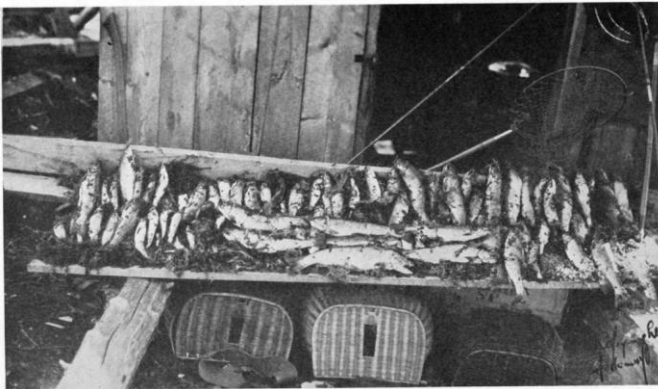
Little Crabbes Brook                      12B/2

### **Notes:**

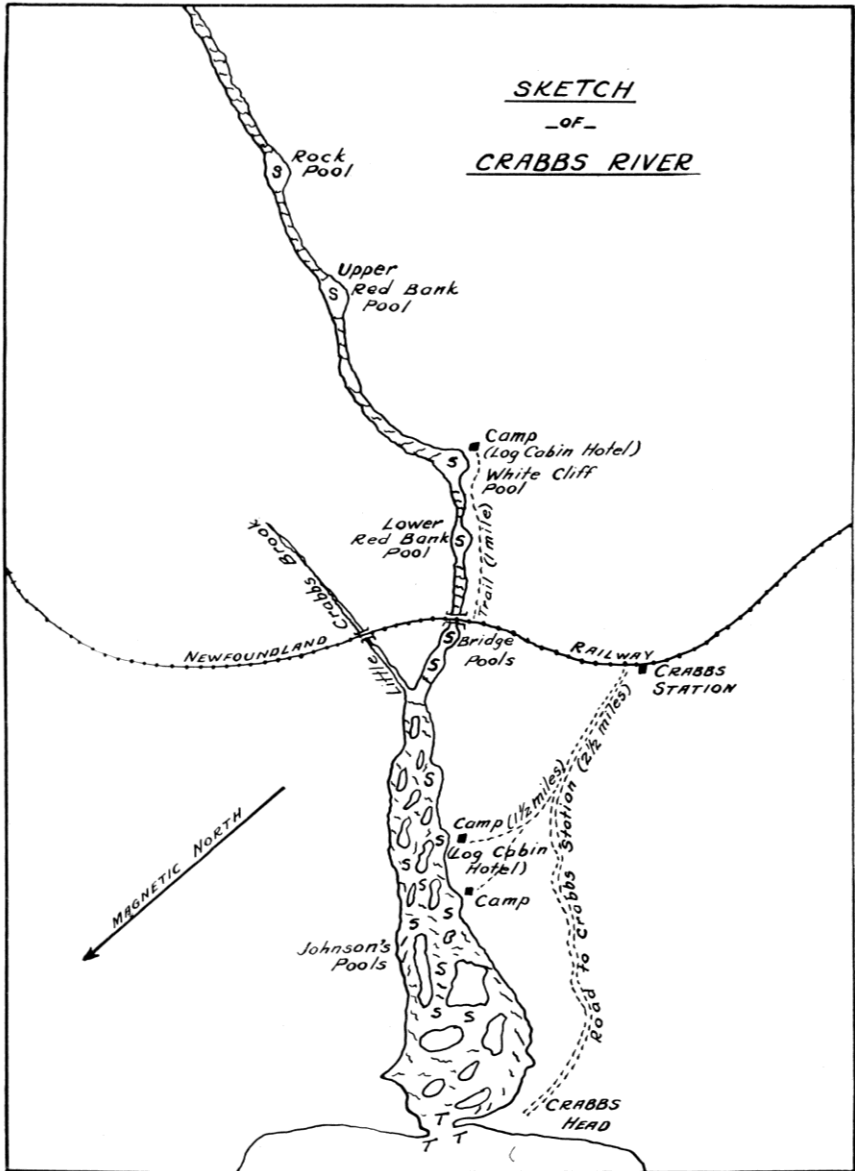
Rises west of Dashwoods Pond      12B/01

### **Pools:**

Johnson's Pools, Bridge Pools, Lower Red Bank Pool, White Cliff Pool, Upper Red Bank Pool, Rock Pool



SKETCH  
-OF-  
CRABBS RIVER



## MIDDLE BARACHOIS BROOK

### ***Location—***

On West Coast, approximately 65 miles from Port aux Basques.

### ***Accessibility—***

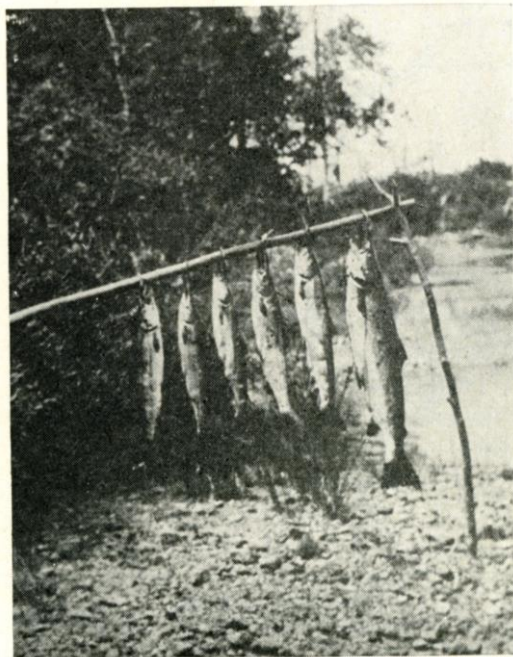
From Cartyville, three-quarters mile from the river's mouth.

### ***General Remarks—***

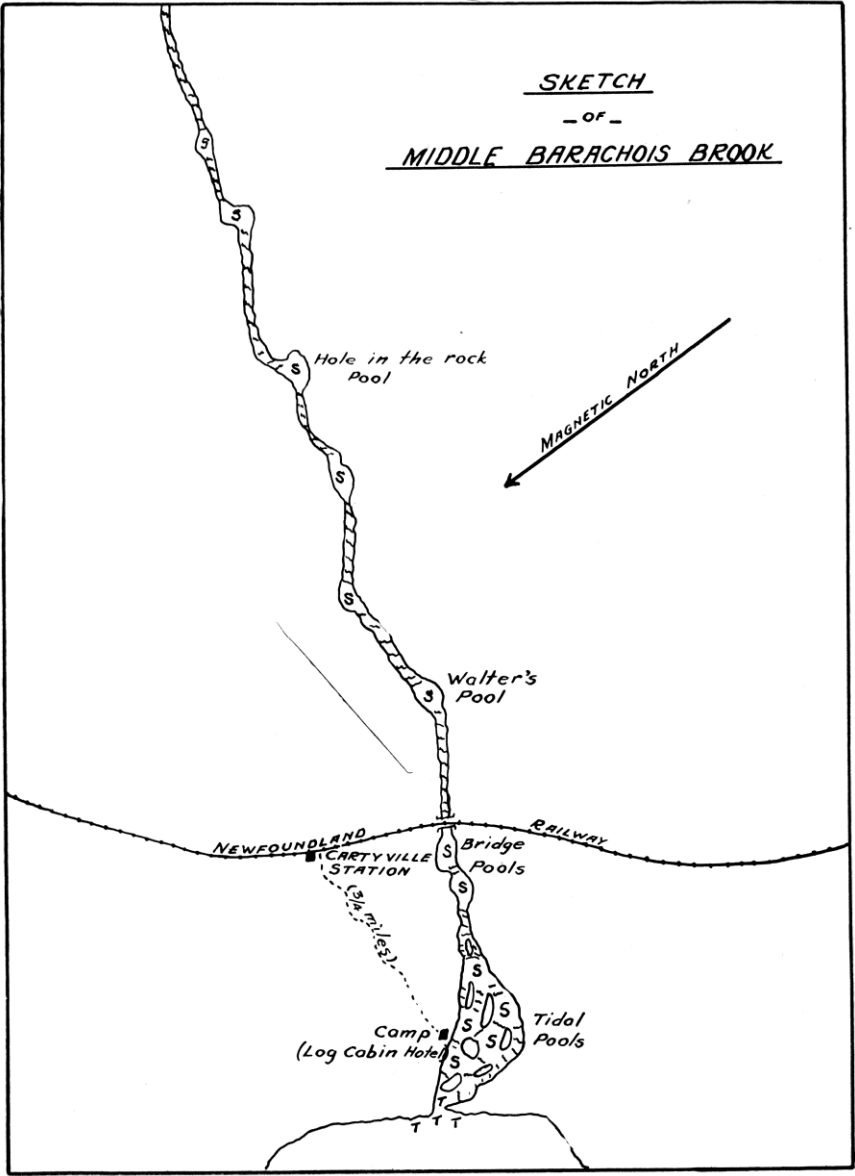
This river is similar to others, draining what is known as the Highlands, and is studded with many islands, many of which make large and admirable salmon s. Sea-trout fishing is good at the river's mouth during the whole season. The run of salmon is plentiful but large fish are scarce.

### ***Pools:***

Tidal Pools, Bridge Pools, Walter's Pool, Hole in the Rock Pool, 4 unnamed pools



SKETCH  
- OF -  
MIDDLE BARACHOIS BROOK



NEWFOUNDLAND RAILWAY

CARTYVILLE STATION

Camp (Log Cabin Hotel)

Hole in the rock Pool

Walter's Pool

Bridge Pools

Tidal Pools

MAGNETIC NORTH

3/4 mile

T T

## ROBINSON'S RIVER

### ***Location—***

On West Coast, about 70 miles from Port aux Basques.

### ***Accessibility—***

About 2 miles from the town of Robinson's at the mouth of the river.

### ***General Remarks—***

A splendid fishing river with many pools on the main river and its branches to give the angler an uninterrupted opportunity to whip away to his heart's delight. Sea trout can also be caught.

### **Tributaries:**

Mica Brook	12B/1
Northern Feeder	12B/2

### **Notes:**

Rises in vicinity of Caribou Pond 12B/1

### **Pools:**

Tidal Pool, Bridge Pool, Tom Leggs Pool, Tom Shears Pool, White Cliff Pool, Big Dribble Pool, Forks Pool, Stony Beach Pools, 3 unnamed pools



SKETCH  
- of -  
ROBINSONS RIVER

(14 miles) Falls 60' high

Stony Beach Pools

Northern Feeder Trail

(6 miles) Forks Pool

Private Camp (G. Shears) Camp

Big Dribble Pool (4 miles)

MAGNETIC NORTH

White Cliff Pool

Tom Shears Pool Camp (George Shears)

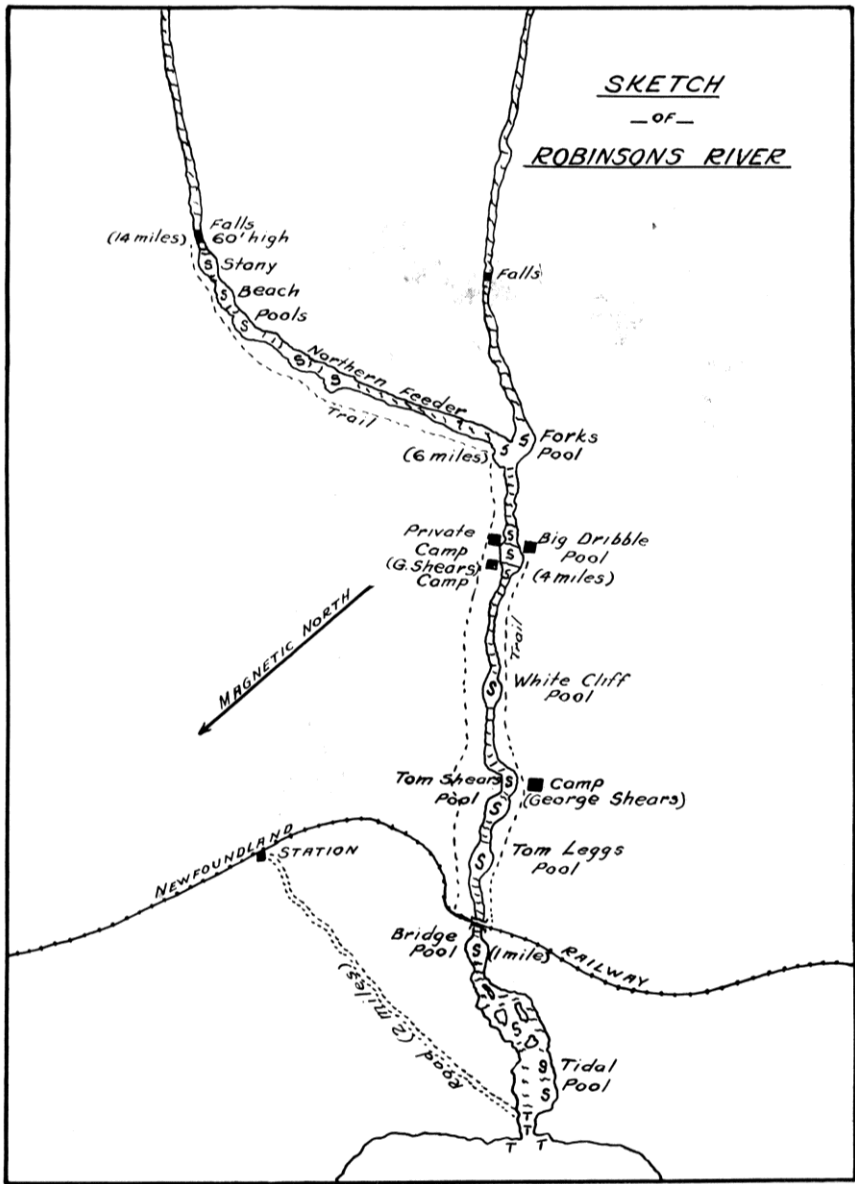
Tom Leggs Pool

NEWFOUNDLAND STATION

Bridge Pool (1 mile) RAILWAY

(25/100) Pools

Tidal Pool



## FISHELLS RIVER

### **Location—**

On West Coast, 73 miles from Port aux Basques.

### **Accessibility—**

From Fishell's [community].

### **General Remarks—**

This river contains numerous good pools from the mouth over a distance of 12 miles. Salmon ranging from five to ten lbs. can readily be caught. Boats or canoes for fishing are not required. The bed of the river makes admirable walking, and fishing the various pools can be accomplished without undue hardship. Sea trout can be caught at the mouth of the river.

A sportsman who has been coming to the Island for a number of years says of this river: "A grand little river where I have taken, years ago, as many as 300 salmon in a season in the early days. I believe I was one of the first, if not the first person, to fish here with flies, and it cannot be described, for the bottom was literally covered with salmon and sea trout of enormous size."

### **Tributaries:**

Clam Brook	12B/7
Fischells Dribble	12B/7
Joe Delaneys Brook	12B/8

### **Notes:**

Now Fischells Brook	
Rises in Fischells Pond	12B/1

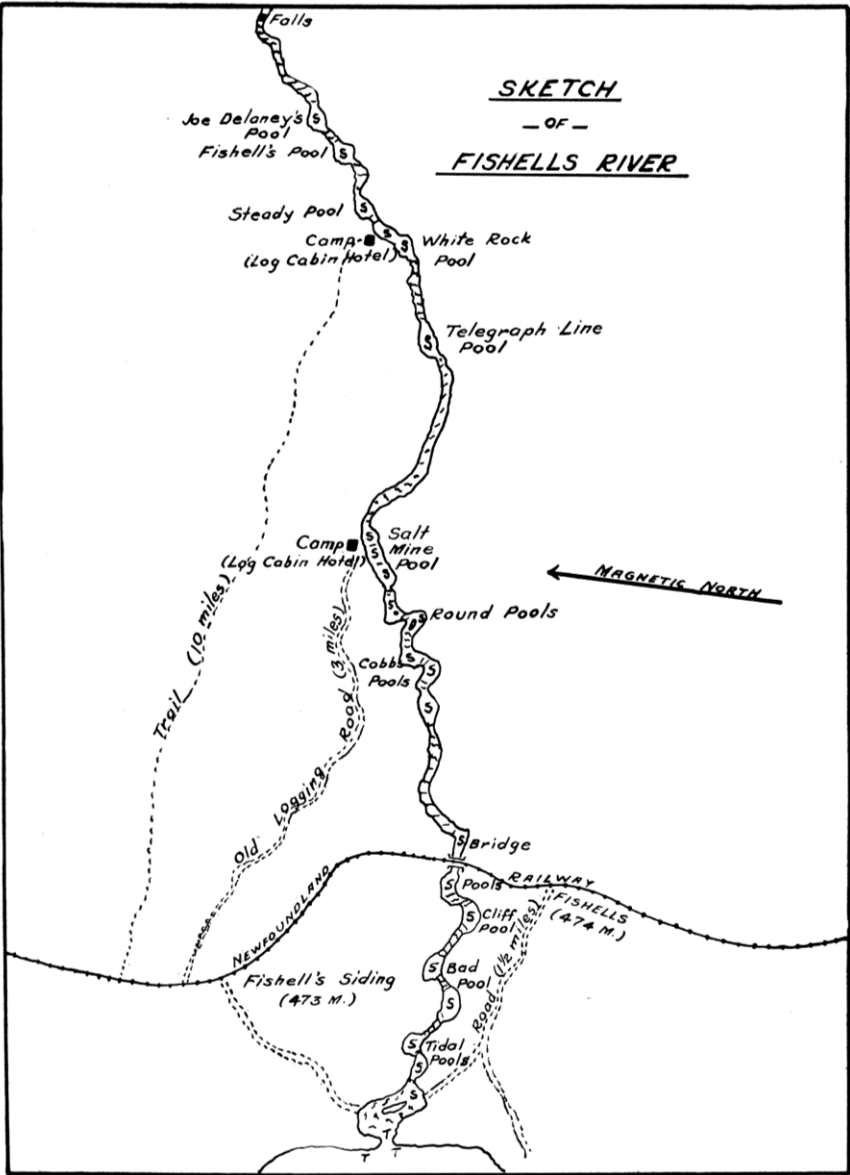
### **Pools:**

Tidal Pools, Bad Pool, Cliff Pool, Bridge Pools, Cobbs Pools, Round Pool, Salt Mine Pool, Telegraph Line Pool, White Rock Pool, Steady Pool, Fishell's Pool, Joe Delaney's Pool, 1 unnamed pool

SKETCH

- OF -

FISHELLS RIVER





## FLAT BAY BROOK

### **Location—**

In Bay St. George, on the West Coast.

### **Accessibility—**

The upper reaches of this river are approximately 4½ miles south of St. George's [community]. A road connects St. George's with the river.

### **General Remarks—**

There are also a number of good pools on the lower reaches of the river, but they are not so readily accessible. A road traverses the east bank of the river alongside of which there are admirable camping sites. The road connects with the main road to St. George's. A sportsman's remark: "A really good river with fish of size and plentiful at times."

### **Tributaries:**

China Brook	12B/7	Sheep Brook	12B/8
Dribble Brook	12B/7	Spear Brook	12B/8
Coal Brook	12B/8	Three Brooks	12B/8
Cross Pond Brook	12B/8	Wolf Brook	12B/8
Lookout Brook	12B/8		

### **Notes:**

Now spelled Fischells

Rises west of King George IV Lake 12A/4

### **Pools:**

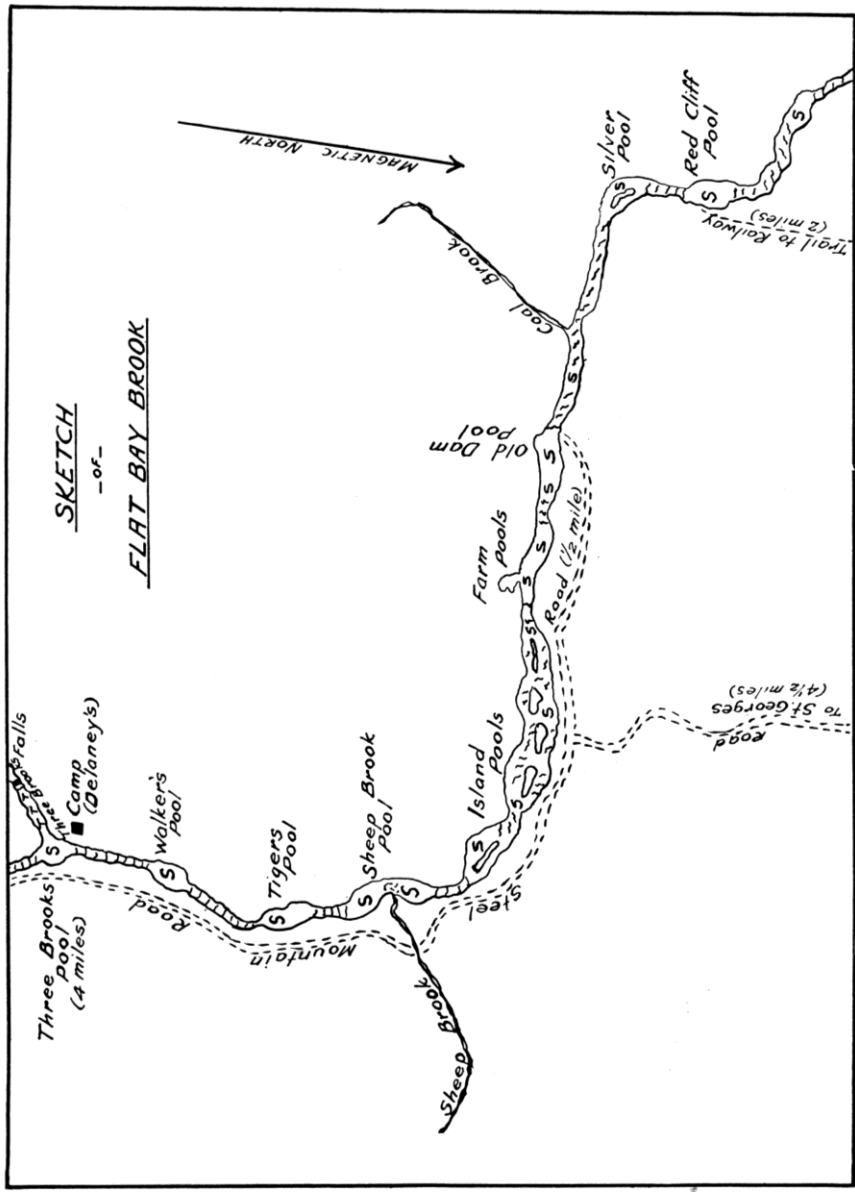
Red Cliff Pool, Silver Pool, Old Dam Pool, Farm Pools, Island Pools, Sheep Brook Pool, Tigers Pool, Walker's Pool, Three Brooks Pool



SKETCH

-of-

FLAT BAY BROOK



## LITTLE BARACHOIS BROOK

### ***Location—***

On the West Coast about 90 miles from Port aux Basques. This river flows into Bay St. George.

### ***Accessibility—***

St. George's is approximately 4 miles from the river, and a motor road from St. George's crosses it. Motor boats and motor cars can readily be hired for the run to the river.

### ***General Remarks—***

There are many good salmon pools on this river. Good camping sites are readily located.

### **Tributaries:**

Birchy Brook	12B/8
Tight Brook	12B/8
White Hill Brook	12B/8

### **Notes:**

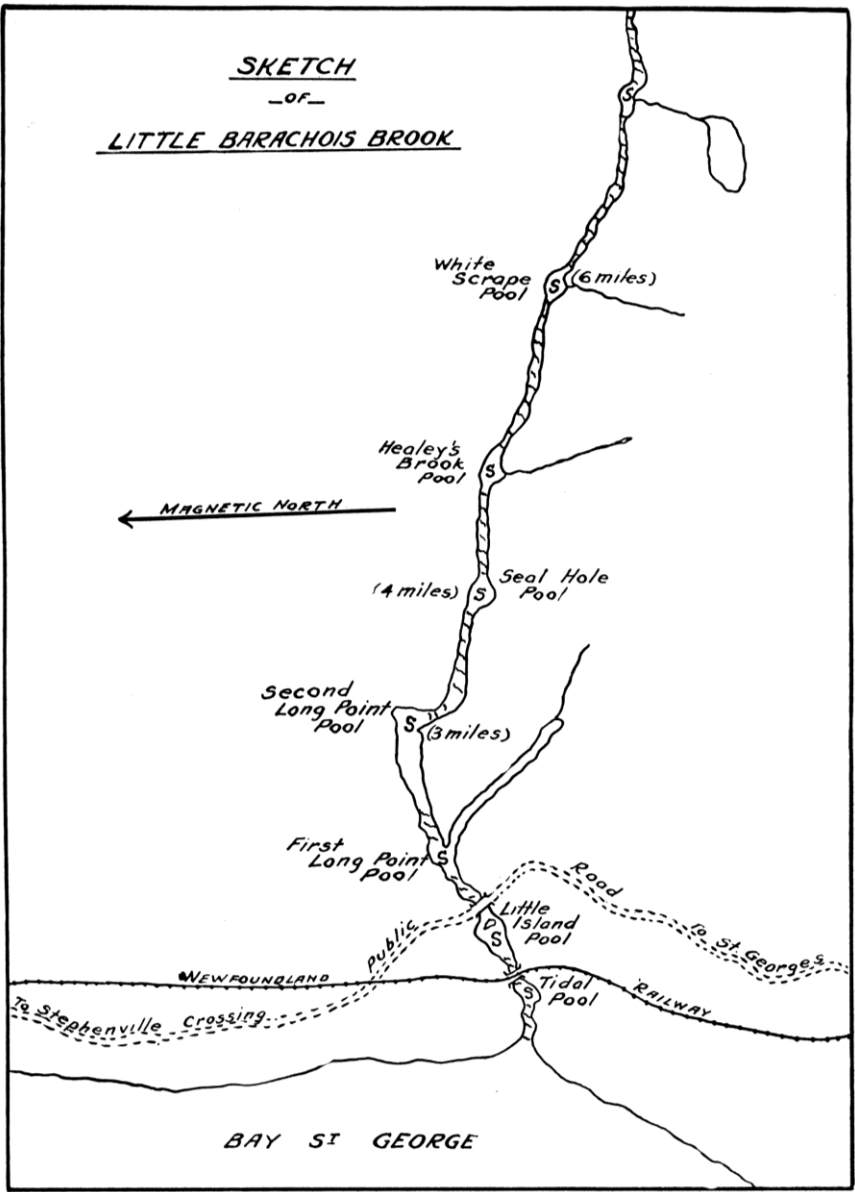
Rises in high mountains	12A/5
-------------------------	-------

### **Pools:**

Tidal Pool, Little Island Pool, First Long Point Pool, Second Long Point Pool, Seal Hole Pool, Healey's Brook Pool, White Scrape Pool



SKETCH  
-of-  
LITTLE BARACHOIS BROOK



## ST. GEORGE'S RIVER

### ***Location–***

On the West Coast at the bottom of Bay St. George,

### ***Accessibility–***

This river flows into what is known as The Gut, a deep inland arm of the sea at the bottom of Bay St. George. From St. George's and Stephenville Crossing the river can be reached by motor boat.

### ***General Remarks–***

This river flows from the Barrens situated on what is known as the Long Range Mountains. It is distant 15 miles from St. George's and 8 miles from Stephenville Crossing. Motor boats can be hired for the trip to the river. This river contains some fine salmon s, formed by the nature of the underlying ledges and rapids at the foot of which the salmon lie. The run of fish is large.

### **Tributaries:**

<b>Little River</b>	12B/8
Bottom Brook	12B/9
Caribou Brook	12B/9
<b>Harrys River</b>	12B/9
Middle Bay Brook	12B/9
Southwest Brook	12B/9
Wheeler Brook	12B/9

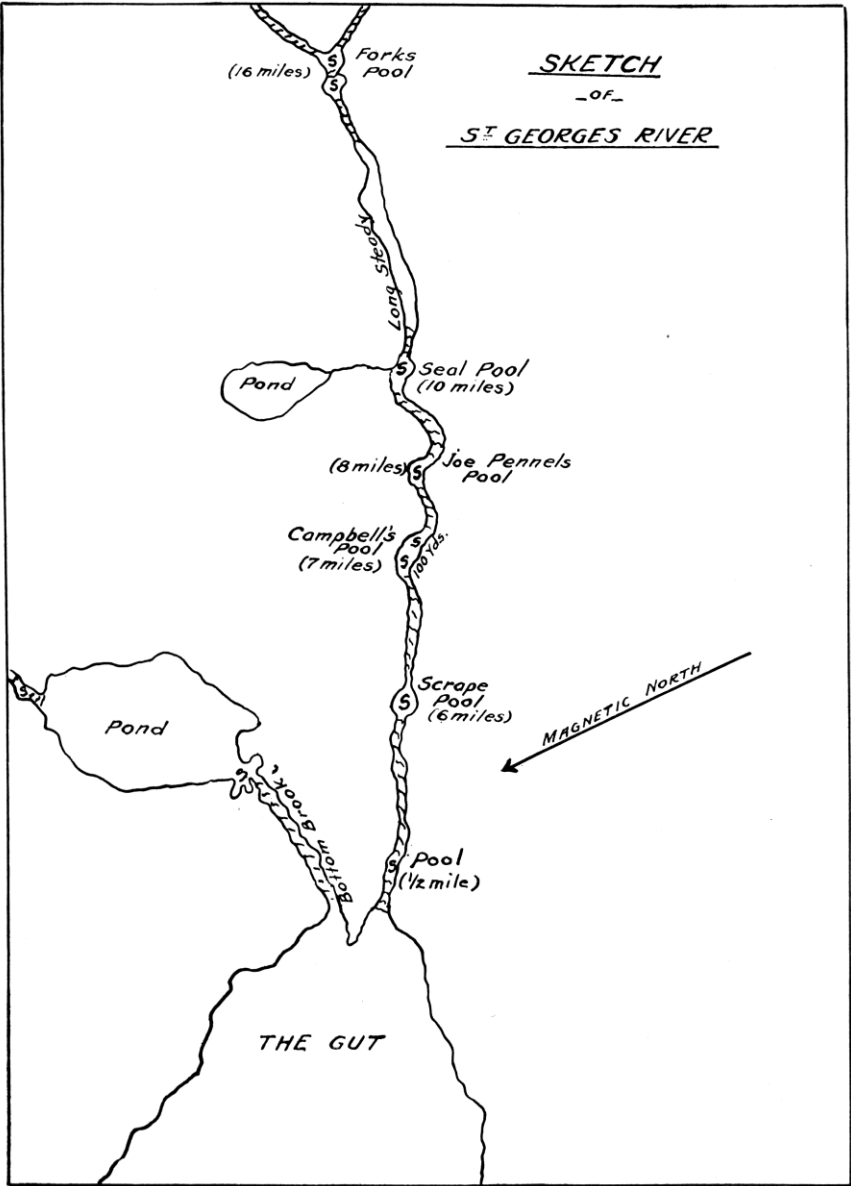
### **Notes:**

Also known as South West Brook

Now just the embayment inside The Gut, which is fed by Southwest Brook.

### **Pools:**

Pool, Scrape Pool, Campbell's Pool, Joe Pennels Pool, Seal Pool, Forks Pool



## BOTTOM BROOK

### ***Location—***

On the West Coast, at the bottom of Bay St. George.

### ***Accessibility—***

This river flows into what is known as The Gut.

### ***General Remarks—***

At the mouth of the brook, a heavy rapid compels a portage, but boats are kept by guides on the chain of lakes that empty into the river one-half mile above. A trail follows the river up its west bank.

### **Tributaries:**

Caribou Brook 12B/9

### **Notes:**

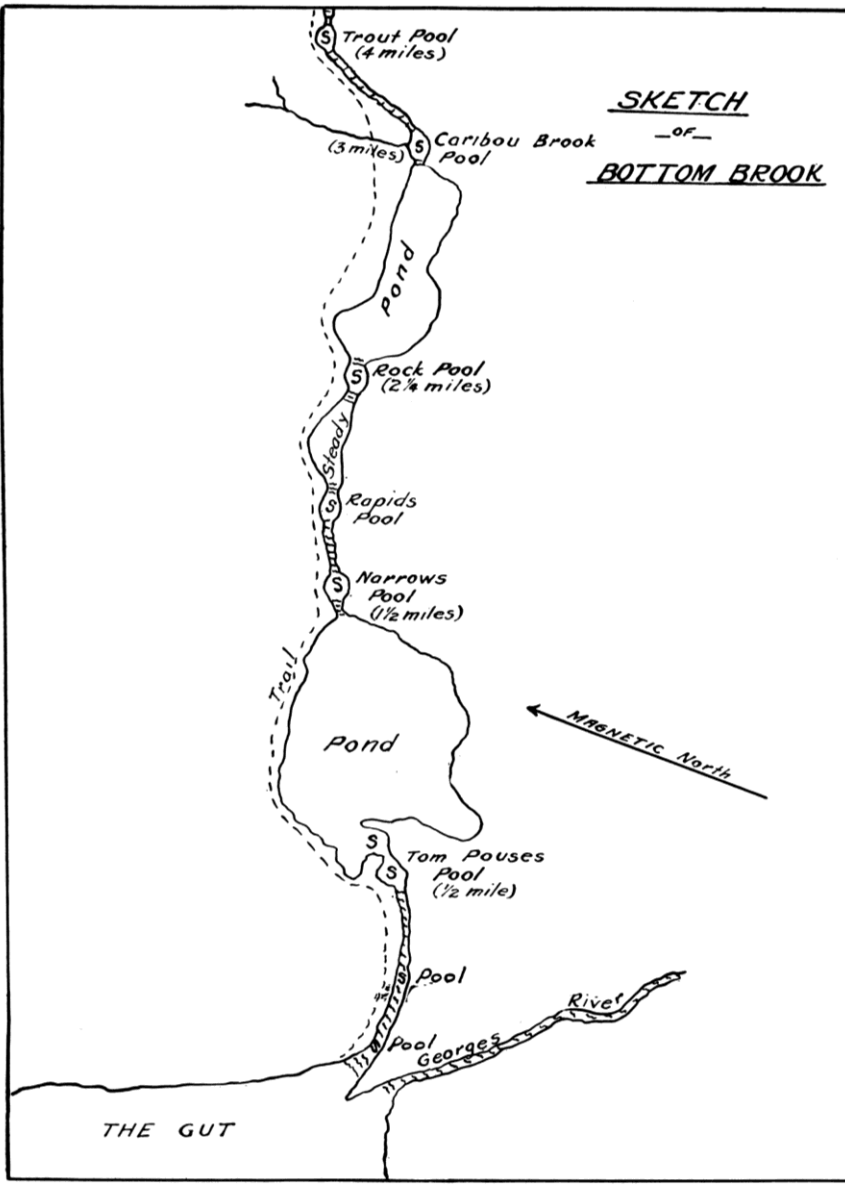
Rises south of Little Grand Lake 12A/12

### **Pools:**

Pool, Pool, Tom Pouses Pool, Narrows Pool, Rapids Pool, Rock Pool, Caribou Brook Pool, Trout Pool



SKETCH  
-OF-  
BOTTOM BROOK





## HARRY'S RIVER

### **Location—**

On the West Coast, empties into The Gut at the bottom of Bay St. George.

### **Accessibility—**

The Newfoundland Railway traversed the north bank of this river for its entire length of about 20 miles.

### **General Remarks—**

All fishermen are interested in records ... Captain Walter P. Lambert, from May 26<sup>th</sup> to September 1<sup>st</sup> landed 198 salmon and grilse, the largest of which weighed 28 lbs. S. Overton landed 90 salmon and grilse from May 22<sup>nd</sup> to July 24<sup>th</sup>. Messrs. W.A.S. Sparling and L. Young, from May 23<sup>rd</sup> to August 27<sup>th</sup> landed 139 salmon and grilse. Maximum weight 29 lbs. E.F. Reinhart landed 18 salmon from July 16<sup>th</sup> to 25<sup>th</sup>. Of this number, 6 exceeded 20 lbs. The above all fished ... on Harry's, Crabbs, Highlands, Fishells, Robinson's, Barachois, and North Branch Rivers.

### **Tributaries:**

Ahwachenjeech Brook	12B/9	Jack Burke Brook	12B/9
Black Duck Brook	12B/9	Muskrat Brook	12B/9
Bras Mort Brook	12B/9	Roberts Brook	12B/9
Caribou Brook	12B/9	Rushy Brook	12B/9
Dons Brook	12B/9	Sanders Brook	12B/9
Furies Brook	12B/9	Trout Brook	12B/9
Hickeys Brook	12B/9	Twentieth Brook	12B/9

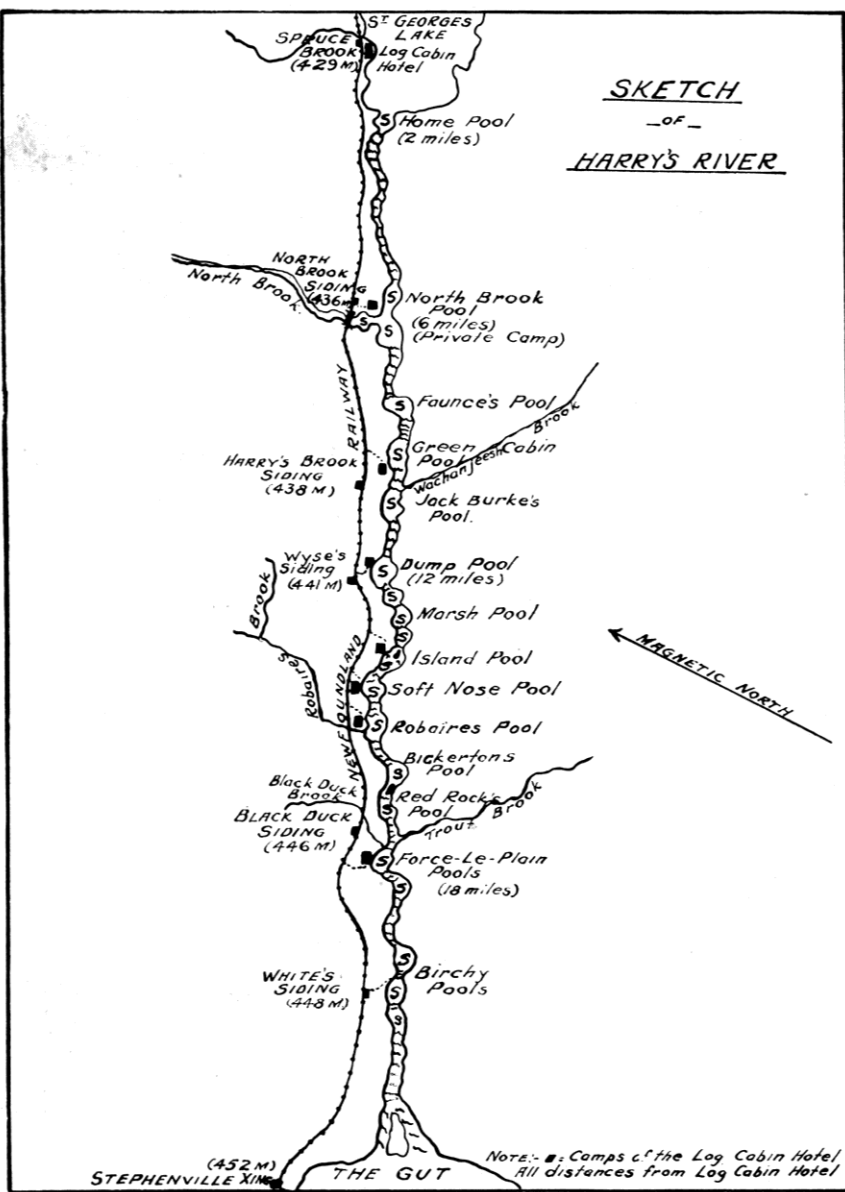
### **Notes:**

Rises in Georges Lake 12B/9 and 16

### **Pools:**

Birchy Pools, Force-Le-Plain Pools, Red Rocks Pool, Bickertons Pool, Robaires Pool, Soft Nose Pool, Island Pool, Marsh Pool, Dump Pool, Jack Burke's Pool, Green Pool, Faunce's Pool, North Brook Pool, Home Pool

SKETCH  
 -of-  
HARRY'S RIVER



## FOX ISLAND RIVER

### ***Location—***

In Port au Port Bay on West Coast [also known as Benoit's Brook].

### ***Accessibility—***

This river is readily reached from Stephenville Crossing or St. George's. A motor road runs from St. Georges through Stephenville to The Gravels, Port au Port, a total distance of 30 miles. At The Gravels a motor boat can be hired for the run to the river, a distance of approximately 9 miles.

### ***General Remarks—***

Good camping sites are numerous. Salmon ranging from 10 to 30 lbs. have been caught. Good sea-trout fishing can be had at the mouth of the river in June and early July.

### **Tributaries:**

Phillips Brook 12B/10

### **Notes:**

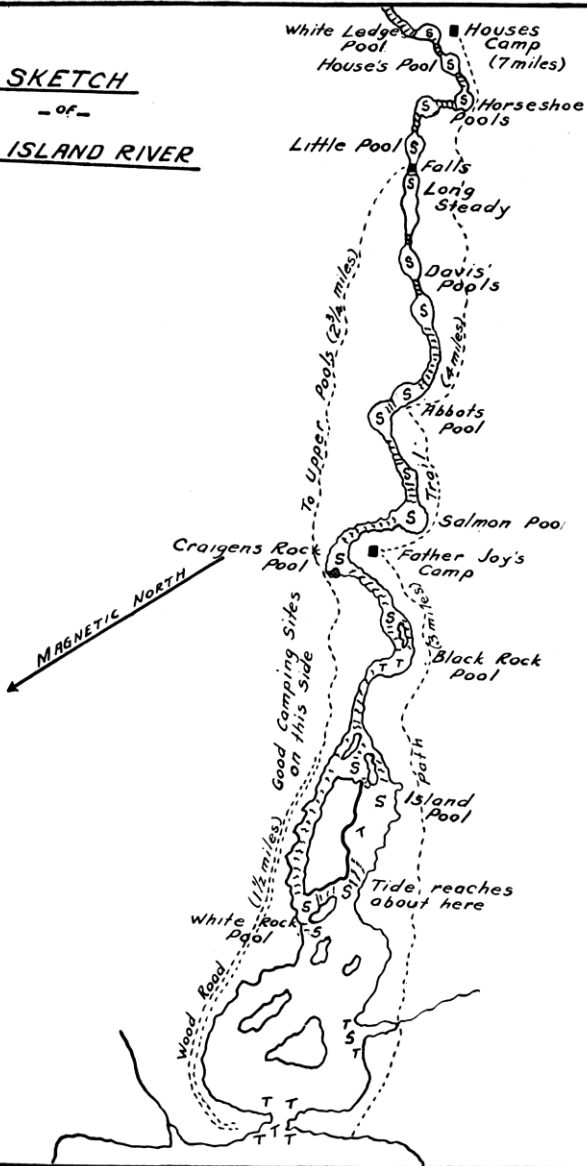
Rises in the mountains 12B/16

### **Pools:**

White Rock Pool, Island Pool, Black Rock Pool, Craigens Rock Pool, Salmon Pool, Abbots Pool, Davis' Pools, Long Steady, Little Pool, Horseshoe Pools, House's Pool, White Ledge Pool



SKETCH  
- of -  
FOX ISLAND RIVER



## SERPENTINE RIVER

### **Location–**

On the West Coast 12 miles [south] from the entrance to Bay of Islands.

### **Accessibility–**

Readily reached by motor boat from Curling in Bay of Islands, a total distance of approximately 30 miles.

### **General Remarks–**

This is a well-known river to which many anglers, from abroad, return year after year. It offers excellent fishing and the run of salmon is large, fish of 40 lbs. in weight having been caught. From the falls, a distance of approximately 5 miles, to the mouth of the river, are located many excellent pools and are most readily accessible. Other pools are located above the falls to the outlet at Serpentine Lake. A trail leads from the lower pools to the falls. Excellent sea-trout fishing can be had in June and July at the mouth of the river. Camping sites along the river are numerous.

### **Tributaries:**

Blue Hill Brook	12B/16	Red Barren Brook	12B/16
East Blue Hill Brook	12B/16	Simms Brook	12B/16
Middle Blue Hill Brook	12B/16	Whealers Brook	12B/16

### **Notes:**

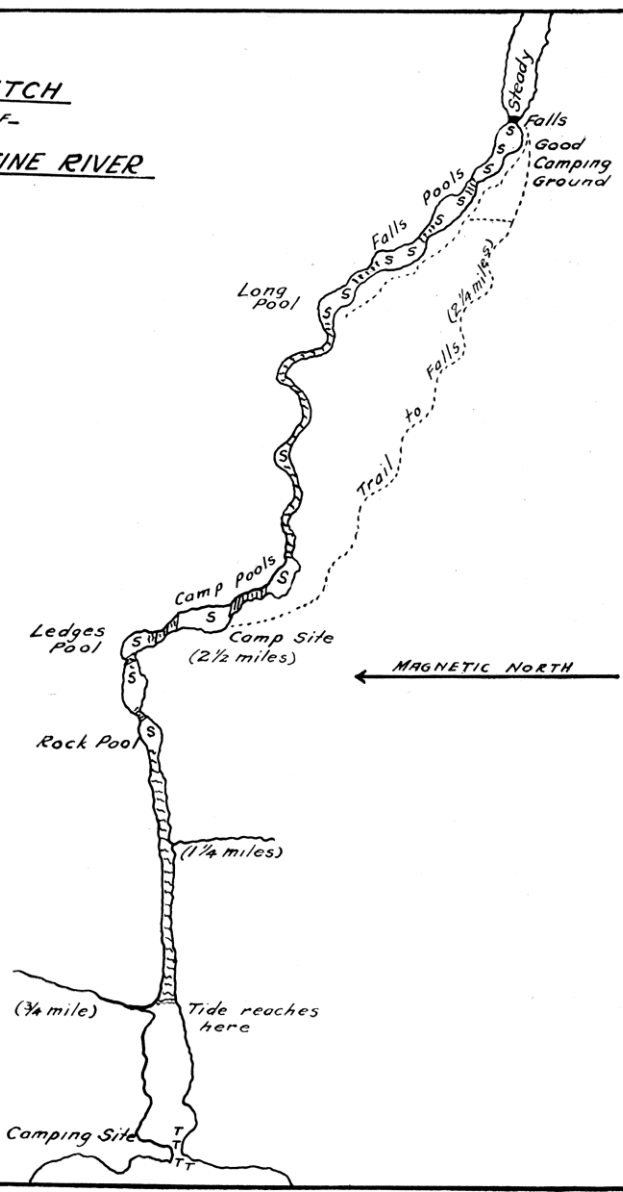
Rises in Serpentine Lake	12B/16
--------------------------	--------

### **Pools:**

Rock Pool, Ledges Pool, Camp Pools, Long Pool, Falls Pools



SKETCH  
-of-  
SERPENTINE RIVER



## 1 OTHER BROOK

ROMAIN'S BROOK [Now spelled Romaines; 12B/10]  
Near the bottom of Bay St. George. Good for sea trout.

